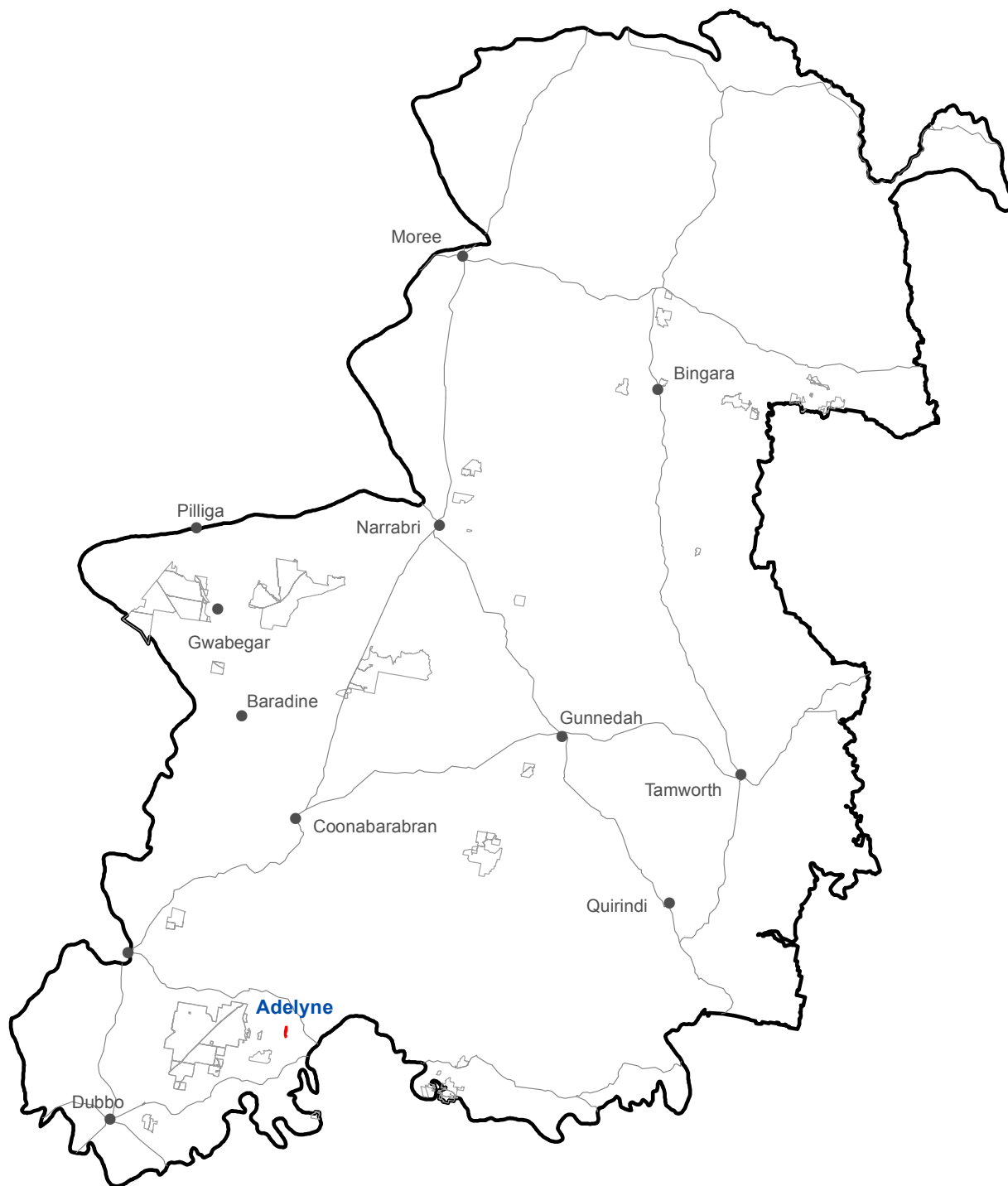


# Adelyne State Conservation Area (148 hectares)

## Location



- Adelyne State Conservation Area
- Other Zone 3 State Conservation Areas

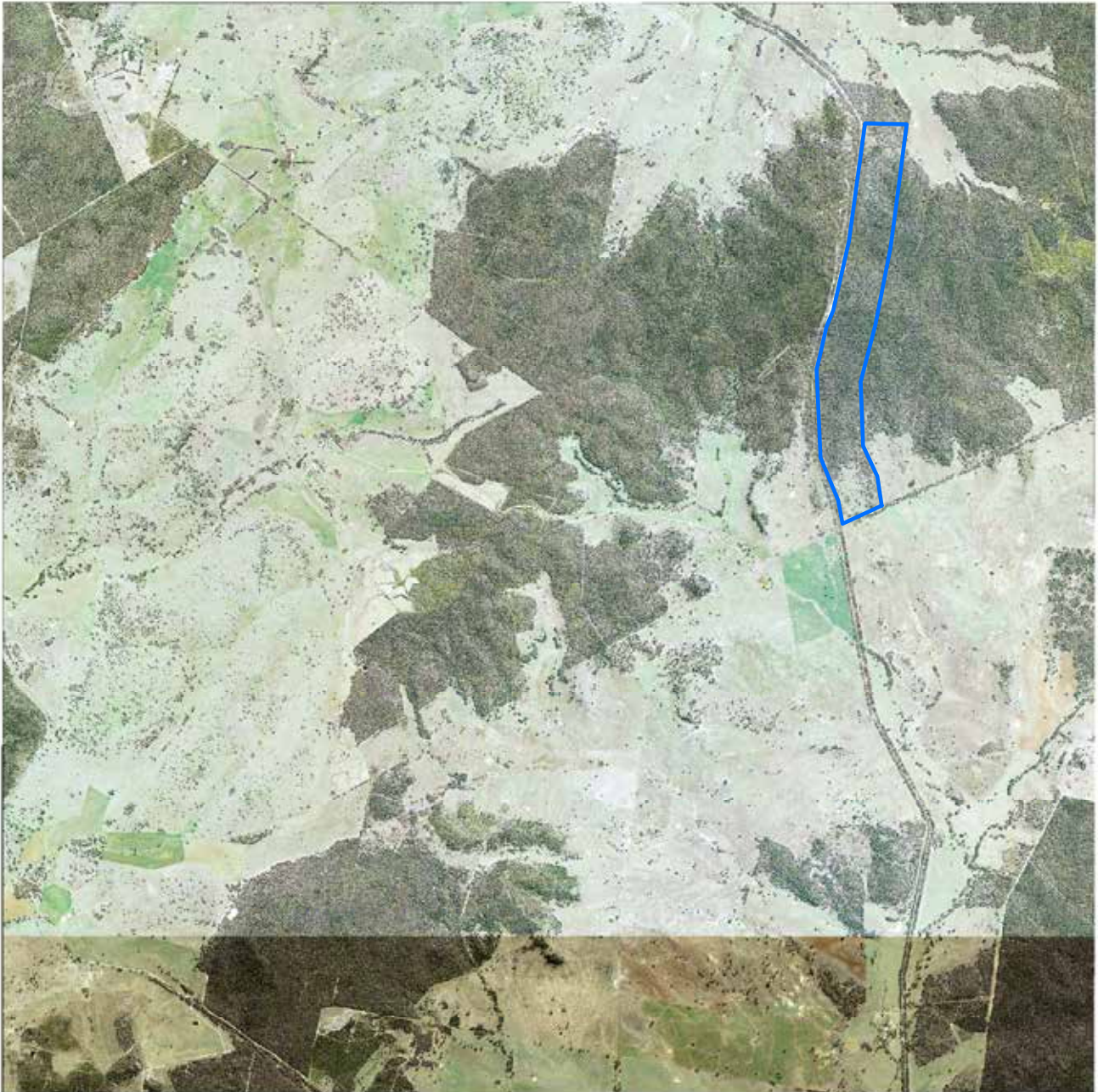
Spatial data courtesy of Office of Environment and Heritage.




0 Km 60

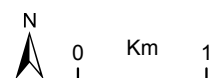
# Adelyne State Conservation Area

Aerial



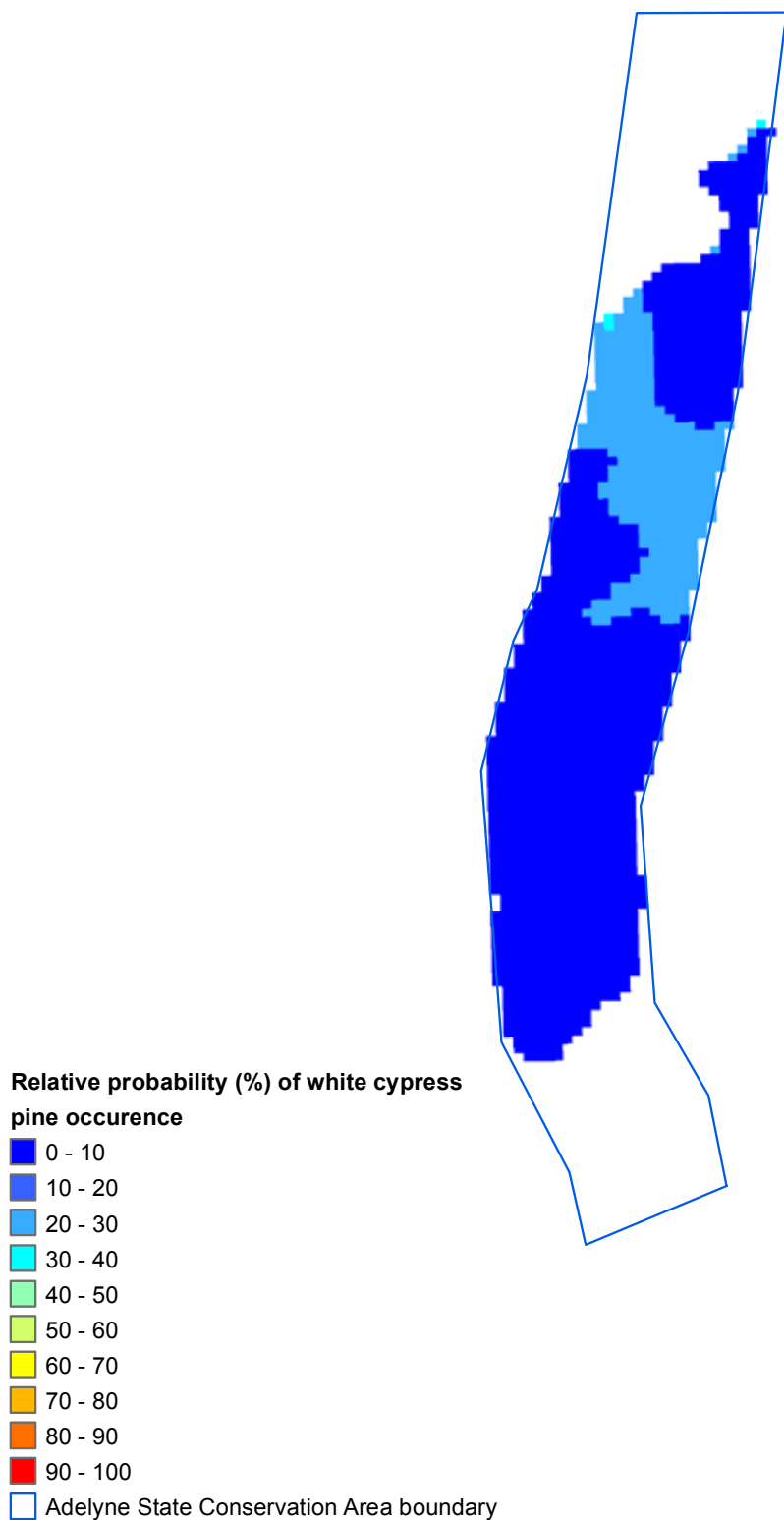
 Adelyne State Conservation Area boundary

ADS40 Airborne Digital Sensor data.  
Spatial data courtesy of Office of Environment and Heritage.  
Spatial analysis by Remote Census Pty Ltd (2014).



# Adelyne State Conservation Area

Predicted location - white cypress pine

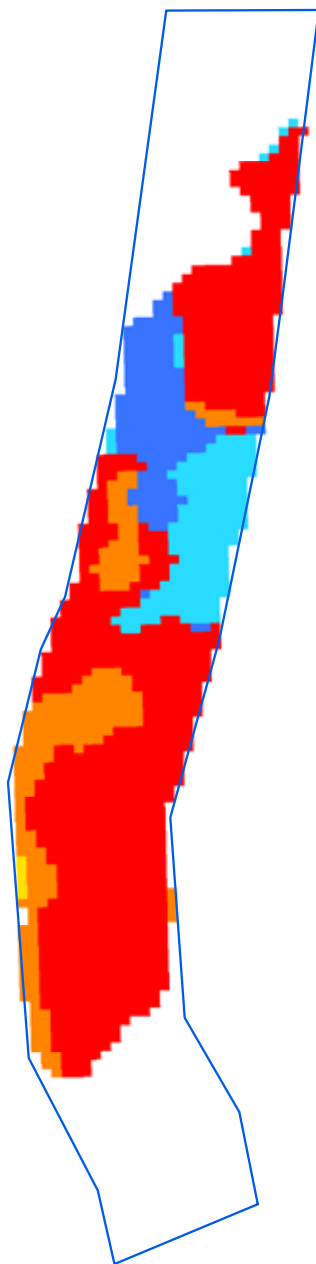


Spatial data courtesy of Office of Environment and Heritage.  
Spatial analysis by Eco Logical Australia Pty Ltd.



# Adelyne State Conservation Area

Predicted location - black cypress pine



**Relative probability (%) of black cypress pine occurrence**

- 0 - 10
- 10 - 20
- 20 - 30
- 30 - 40
- 40 - 50
- 50 - 60
- 60 - 70
- 70 - 80

Adelyne State Conservation Area boundary

Spatial data courtesy of Office of Environment and Heritage.  
Spatial analysis by Eco Logical Australia Pty Ltd.



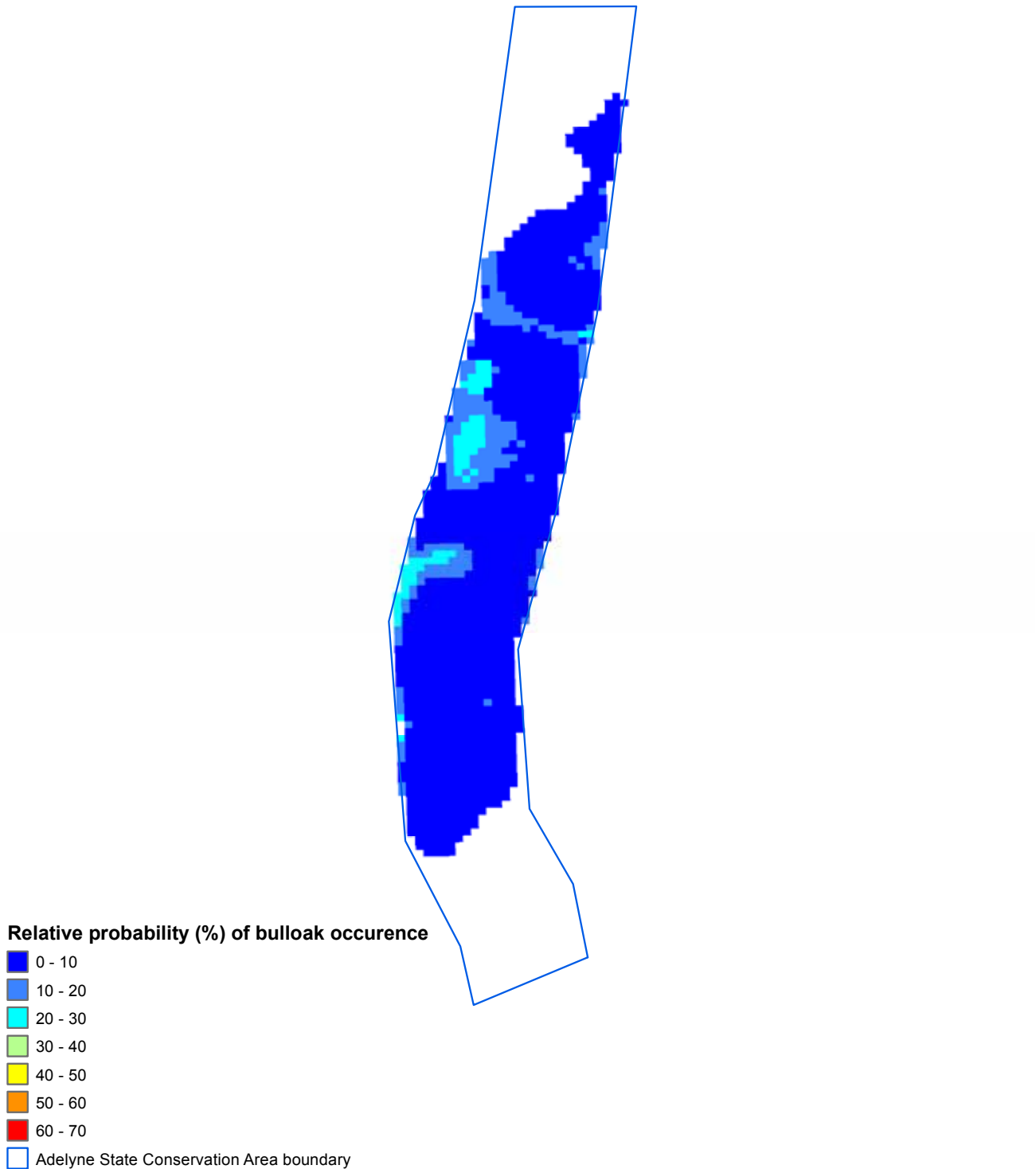
0

Km

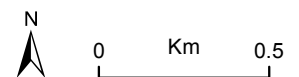
0.5

# Adelyne State Conservation Area

## Predicted location - bulloak



Spatial data courtesy of Office of Environment and Heritage.  
Spatial analysis by Eco Logical Australia Pty Ltd.



# Adelyne State Conservation Area

## Continuous canopy density surface - cypress pine



ADS40 Airborne Digital Sensor data.  
Spatial data courtesy of Office of Environment and Heritage.  
Spatial analysis by Remote Census Pty Ltd (2014).



# Adelyne State Conservation Area

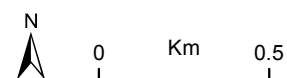
## Discrete canopy density classes - cypress pine



### Canopy density classes

- Class 0 (little or no cypress pine detected)
- Density slice range 1 to 10
- Density slice range 10 to 20
- Density slice range 20 to 30
- Density slice range 30 to 100
- Adelyne State Conservation Area boundary

ADS40 Airborne Digital Sensor data.  
Spatial data courtesy of Office of Environment and Heritage.  
Spatial analysis by Remote Census Pty Ltd (2014).



# Adelyne State Conservation Area

## Summary statistics - spatial analysis

Area of cypress canopy classes (excludes areas affected by wildfire since 2009)	
Class	Total (hectares)
Class 0 (little or no cypress detected)	4
Class 1 (1-10 percent)	45
Class 2 (11-20 percent)	67
Class 3 (21-30 percent)	59
Class 4 (>31 percent)	27

Issues and confidence levels for ADS40 spatial products		
ADS40 image quality	Issues	Confidence levels
High	Image classification and mapping includes other species	Lower



# Adelyne State Conservation Area

## Summary statistics - general

Lindsay types	Area (hectares)	Proportion of total (%)
Not Typed	145	-

NSW Vegetation classification and assessment (VCA) type	NSW TSC Act <sup>1</sup>	EPBC Act <sup>2</sup>
VCA 281: Rough-Barked Apple - red gum - Yellow Box woodland on alluvial clay to loam soils on valley flats in the northern NSW South West Cypress and Brigalow Belt South Bioregions	yes	yes
VCA 440: Red Stringybark - Narrow-leaved Ironbark - Black Cypress Pine - hill red gum sandstone woodland of southern NSW Brigalow Belt South Bioregion	-	-

<sup>1</sup>NSW *Threatened Species Conservation Act 1995*

<sup>2</sup>Australian Government *Environment Protection and Biodiversity Conservation Act 1999*

Native species recorded		Number	
Flora		-	
Fauna		-	
Threatened species			
Scientific name	Common name	NSW TSC Act <sup>1</sup>	EPBC Act <sup>2</sup>
Flora			
-	-	-	-
Fauna			
-	-	-	-

Cultural heritage - Aboriginal and non-Aboriginal	Number of sites
AHIMS registered sites	0
Heritage items or places of historic significance	no information available

Current management plans	Status
Plan of management	no
Fire management strategy	June 2012
Regional pest management strategy	Northern plains region 2012-17

Fire history	Prescribed burn (hectares)	Wildfire (hectares)
2008-09 - 2012-13	-	-

Mining	Number of titles
Exploration	1 coal, 1 petroleum
Application	none

Apiarist sites
None