

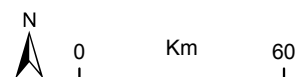
Beni State Conservation Area (1,849 hectares)

Location



- Beni State Conservation Area
- Other Zone 3 State Conservation Areas

Spatial data courtesy of Office of Environment and Heritage.



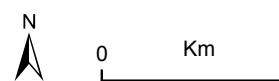
Beni State Conservation Area

Aerial



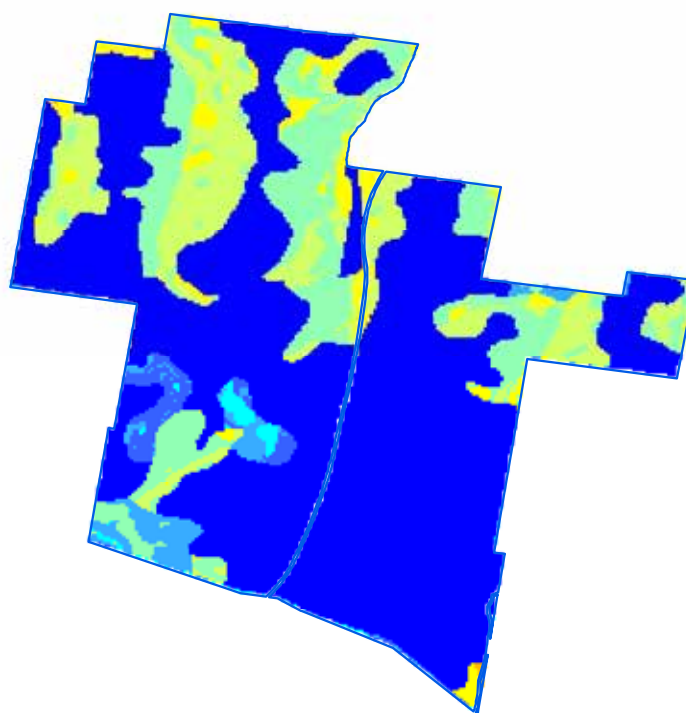
 Beni State Conservation Area boundary

ADS40 Airborne Digital Sensor data.
Spatial data courtesy of Office of Environment and Heritage
Spatial analysis by Remote Census Pty Ltd (2014)



Beni State Conservation Area

Predicted location - white cypress pine



Relative probability (%) of white cypress pine occurrence

- 0 - 10
- 10 - 20
- 20 - 30
- 30 - 40
- 40 - 50
- 50 - 60
- 60 - 70
- 70 - 80
- 80 - 90
- 90 - 100

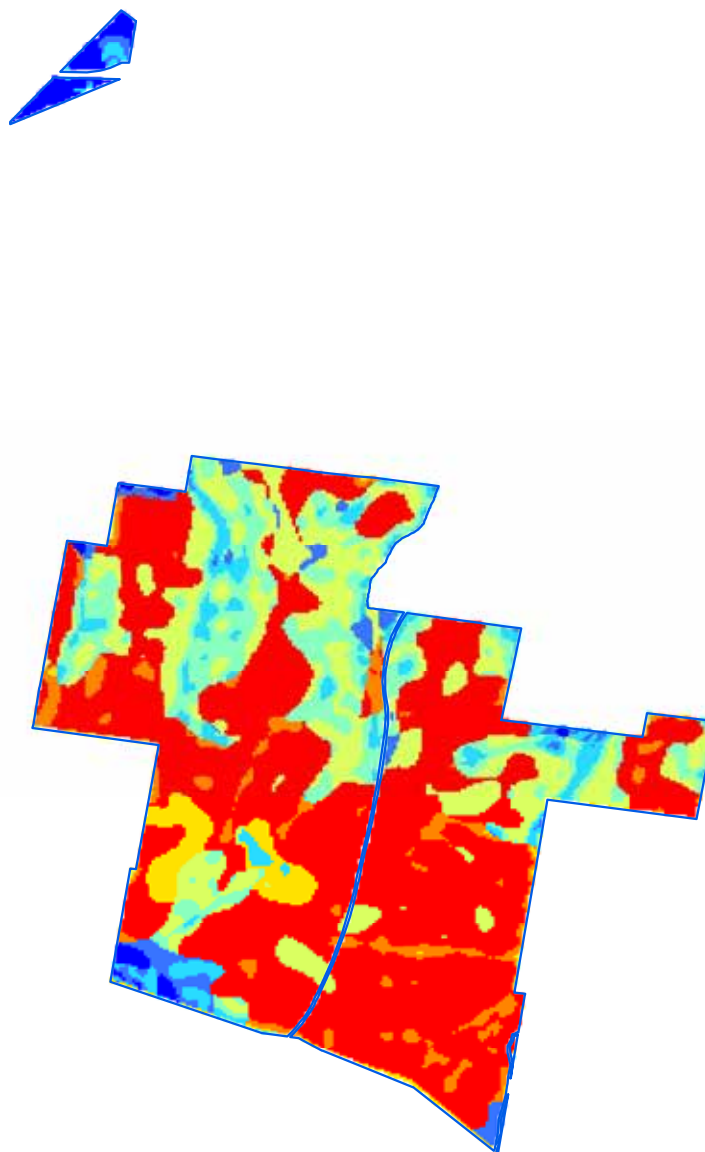
Beni State Conservation Area boundary

Spatial data courtesy of Office of Environment and Heritage.
Spatial analysis by Eco Logical Australia Pty Ltd.



Beni State Conservation Area

Predicted location - black cypress pine



Relative probability (%) of black cypress pine occurrence

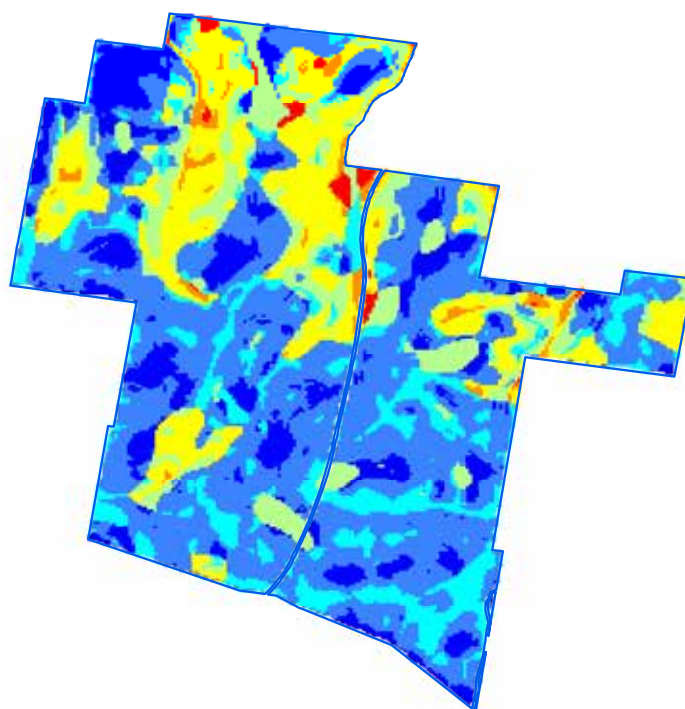
- 0 - 10
- 10 - 20
- 20 - 30
- 30 - 40
- 40 - 50
- 50 - 60
- 60 - 70
- 70 - 80
- Beni State Conservation Area boundary

Spatial data courtesy of Office of Environment and Heritage.
Spatial analysis by Eco Logical Australia Pty Ltd.



Beni State Conservation Area

Predicted location - bulloak



Relative probability (%) of bulloak occurrence

- 0 - 10
- 10 - 20
- 20 - 30
- 30 - 40
- 40 - 50
- 50 - 60
- 60 - 70
- Beni State Conservation Area boundary

Spatial data courtesy of Office of Environment and Heritage.
Spatial analysis by Eco Logical Australia Pty Ltd.



Beni State Conservation Area

Continuous canopy density surface - cypress pine

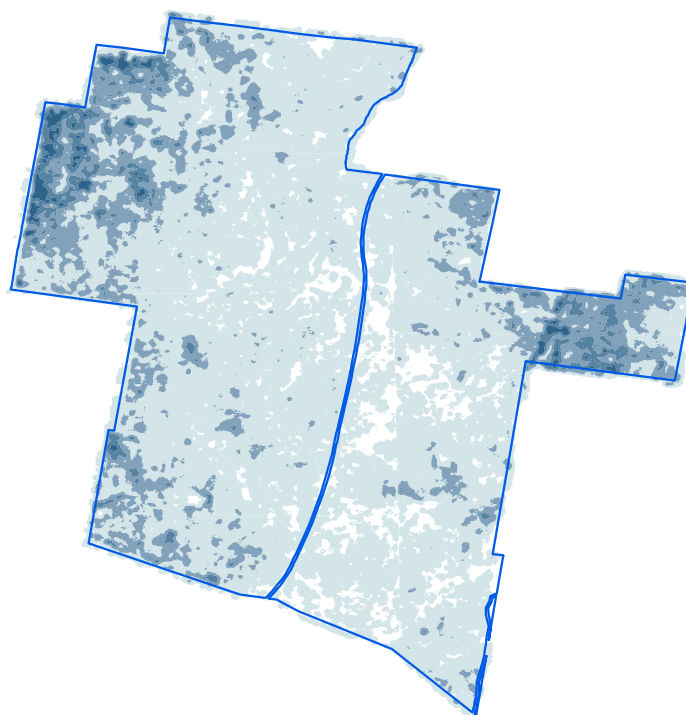


ADS40 Airborne Digital Sensor data.
Spatial data courtesy of Office of Environment and Heritage.
Spatial analysis by Remote Census Pty Ltd (2014).



Beni State Conservation Area

Discrete canopy density classes - cypress pine



Canopy density classes

- Class 0 (little or no cypress pine detected)
- Density slice range 1 to 10
- Density slice range 10 to 20
- Density slice range 20 to 30
- Density slice range 30 to 100
- Beni State Conservation Area boundary

ADS40 Airborne Digital Sensor data.
Spatial data courtesy of Office of Environment and Heritage.
Spatial analysis by Remote Census Pty Ltd (2014).



Beni State Conservation Area

Summary statistics - spatial analysis

Area of cypress canopy classes (excludes areas affected by wildfire since 2009)	
Class	Total (hectares)
Class 0 (little or no cypress detected)	198
Class 1 (1-10 percent)	1,345
Class 2 (11-20 percent)	301
Class 3 (21-30 percent)	70
Class 4 (>31 percent)	17

Issues and confidence levels for ADS40 spatial products		
ADS40 image quality	Issues	Confidence levels
High	-	Higher

Beni State Conservation Area

Summary statistics - general

Lindsay types	Area (hectares)	Proportion of total (%)
Black Pine - Narrowleaf Ironbark	458	25
Narrowleaf Ironbark - Black Pine	126	7
Narrowleaf Ironbark - Cypress Pine	510	28
White Box - White Cypress Pine (Lindsay Types)	6	<1
White Cypress Pine - Red Gum	7	<1
White Cypress Pine - Narrowleaf Ironbark	656	36
White Cypress Pine - Grey Box (Lindsay Types)	34	2
Not typed	30	2

NSW Vegetation classification and assessment (VCA) type	NSW TSC Act ¹	EPBC Act ²
VCA 470: Mugga Ironbark - Narrow-leaved Ironbark - Buloke - Black Cypress Pine shrub grass open forest in the Goonoo forests and surrounding region, southern Brigalow Belt South Bioregion	-	-
VCA 468: Narrow-leaved Ironbark - Black Cypress Pine +/- Blakely's Red Gum shrubby open forest on sandstone low hills in the southern Brigalow Belt South Bioregion (including Goonoo)	-	-
VCA 473: Red gum - Rough-barked Apple - Narrow-leaved Ironbark - cypress pine grassy open forest on flats and drainage lines in the Goonoo and surrounding forests, southern Brigalow Belt South Bioregion	-	-
VCA 435: White Box - White Cypress Pine shrub grass hills woodland in the Brigalow Belt South and Nandewar Bioregions	yes	yes
VCA 469: White Cypress Pine - Narrow-leaved Ironbark - Buloke grassy open forest of the Dubbo region, southern Brigalow Belt South Bioregion	-	-

¹ NSW *Threatened Species Conservation Act 1995*

² Australian Government *Environment Protection and Biodiversity Conservation Act 1999*

Native species recorded		Number	
Flora		174	
Fauna		76	
Threatened species		NSW TSC Act ¹	EPBC Act ²
Scientific name	Common name		
Flora			
-	-	-	-
Fauna			
<i>Chthonicola sagittata</i>	Speckled warbler	V	-
<i>Pomatostomus temporalis temporalis</i>	Grey-crowned babbler (eastern subspecies)	V	-
<i>Daphoenositta chrysoptera</i>	Varied sittella	V	-
<i>Petroica boodang</i>	Scarlet robin	V	-
<i>Petaurus norfolcensis</i>	Squirrel glider	V	-
<i>Lophoictinia isura</i>	Square-tailed kite	V	-

Beni State Conservation Area

Summary statistics - general

Cultural heritage - Aboriginal and non-Aboriginal	Number of sites
AHIMS registered sites	3
Heritage items or places of historic significance	3

Current management plans	Status
Plan of management	no
Fire management strategy	June 2009
Regional pest management strategy	Northern plains region 2012-17

Fire history	Prescribed burn (hectares)	Wildfire (hectares)
2010-11	9	-
2012-13	26	-

Mining	Number of titles
Exploration	none
Application	1 petroleum

Apiarist sites
None