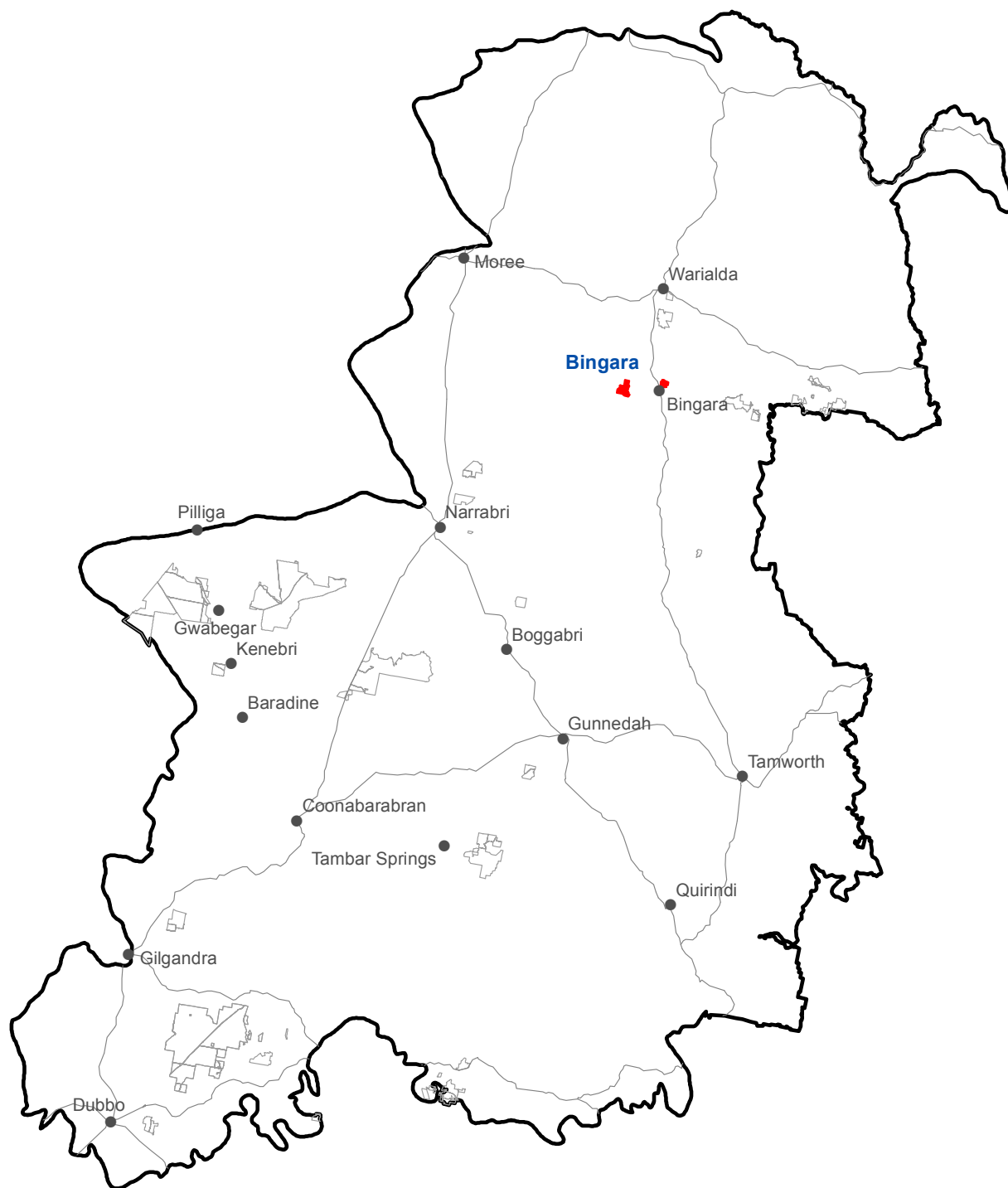


Bingara State Conservation Area (1,979 hectares)

Location



- Bingara State Conservation Area
- Other Zone 3 State Conservation Areas

Spatial data courtesy of:
Office of Environment and Heritage




0 Km 60

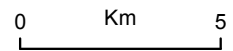
Bingara State Conservation Area

Aerial



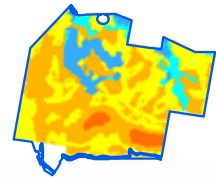
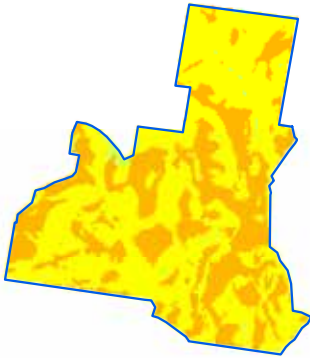
 Bingara State Conservation Area boundary

ADS40 Airborne Digital Sensor data.
Spatial data courtesy of Office of Environment and Heritage.
Spatial analysis by Remote Census Pty Ltd (2014).



Bingara State Conservation Area

Predicted location - white cypress pine



Relative probability (%) of white cypress pine occurrence

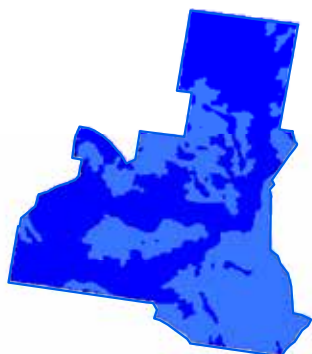


Spatial data courtesy of Office of Environment and Heritage.
Spatial analysis by Eco Logical Australia Pty Ltd.

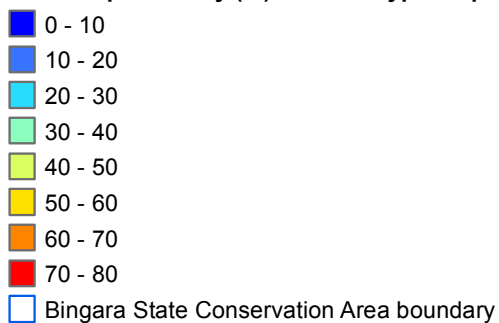


Bingara State Conservation Area

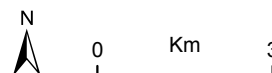
Predicted location - black cypress pine



Relative probability (%) of black cypress pine occurrence



Spatial data courtesy of Office of Environment and Heritage.
Spatial analysis by Eco Logical Australia Pty Ltd.

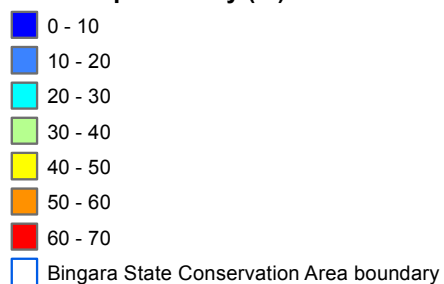


Bingara State Conservation Area

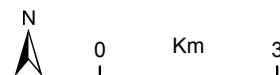
Predicted location - bulloak



Relative probability (%) of bulloak occurrence

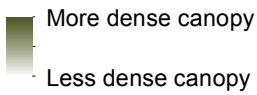
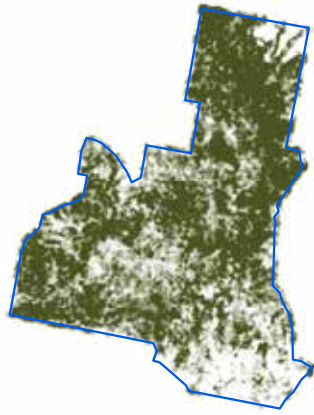



Spatial data courtesy of Office of Environment and Heritage.
Spatial analysis by Eco Logical Australia Pty Ltd.



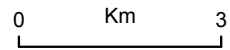
Bingara State Conservation Area

Continuous canopy density surface - cypress pine



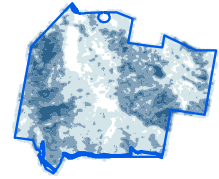
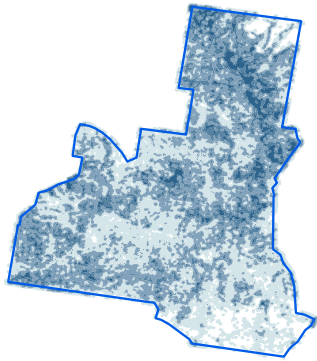
 Bingara State Conservation Area boundary

ADS40 Airborne Digital Sensor data.
Spatial data courtesy of Office of Environment and Heritage.
Spatial analysis by Remote Census Pty Ltd (2014).









Bingara State Conservation Area

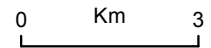
Discrete canopy density classes - cypress pine



Canopy density classes

-  Class 0 (little or no cypress pine detected)
-  Density slice range 1 to 10
-  Density slice range 10 to 20
-  Density slice range 20 to 30
-  Density slice range 30 to 100
-  Bingara State Conservation Area boundary

ADS40 Airborne Digital Sensor data.
Spatial data courtesy of Office of Environment and Heritage.
Spatial analysis by Remote Census Pty Ltd (2014).



Bingara State Conservation Area

Summary statistics - spatial analysis

Area of cypress canopy classes (excludes areas affected by wildfire since 2009)	
Class	Total (hectares)
Class 0 (little or no cypress detected)	146
Class 1 (1-10 percent)	875
Class 2 (11-20 percent)	678
Class 3 (21-30 percent)	315
Class 4 (>31 percent)	113

Issues and confidence levels for ADS40 spatial products		
ADS40 image quality	Issues	Confidence levels
Medium	Image classification and mapping includes other species	Lower

Bingara State Conservation Area

Summary statistics - general

Lindsay types	Area (hectares)	Proportion of total (%)
White Box	30	2
Western Red Gums - White Box (<i>E.albens</i>)	7	<1
White Cypress Pine (<i>Callitris glaucophylla</i>) in association with Silverleaved Ironbark (<i>E. melanophloia</i>) - Tumbledown Red Gum (<i>E. dealbata</i>)	46	2
White Cypress Pine (<i>Callitris glaucophylla</i>) - Silverleaved Ironbark (<i>E. melanophloia</i>) in association with Western Scrub	12	1
White Cypress Pine (<i>Callitris glaucophylla</i>) - Silverleaved Ironbark (<i>E. melanophloia</i>)	228	11
Silverleaved Ironbark (<i>E.melanophloia</i>) over Western Scrub	39	2
Silverleaved Ironbark (<i>E. melanophloia</i>) - White Box (<i>E. albens</i>)	32	2
Caley's Ironbark (<i>E. caleyi</i>) - Tumbledown Red Gum (<i>E. dealbata</i>)	42	2
Silverleaved Ironbark (<i>E.melanophloia</i>) - Tumbledown Red Gum (<i>E.dealbata</i>)	19	1
Silverleaved Ironbark	55	3
Silverleaved Ironbark (<i>E.melanophloia</i>), cleared areas present	1	<1
Cleared with Settlements, Roads, Gravels Pits, etc	2	<1
Water Surfaces	2	<1
Not typed	1,467	74

NSW Vegetation classification and assessment (VCA) type	NSW TSC Act ¹	EPBC Act ²
VCA 112: Black Tea-tree - River Oak - Wilga riparian low forest/shrubland wetland of rich soil depressions in the Brigalow Belt South Bioregion	-	-
VCA 445: Brigalow viney scrub open forest on loamy soils in low hill landscapes in the northern Brigalow Belt South Bioregion NSW	yes	yes
VCA 147: Mock Olive - Wilga - Peach Bush - Carissa semi-evergreen vine thicket (dry rainforest) mainly on basalt soils in the Brigalow Belt South Bioregion	yes	yes
VCA 528: Mugga Ironbark - Blakely's Red Gum open forest of the Nandewar and New England Tablelands Bioregions	nominated	-
VCA 88: Pilliga Box - White Cypress Pine - Buloke shrubby woodland in the Brigalow Belt South Bioregion	-	-
VCA 511: Queensland Bluegrass - Redleg Grass - Rats Tail Grass - spear grass - panic grass derived grassland of the Nandewar and Brigalow Belt South Bioregions	-	-
VCA 78: River Red Gum riparian tall woodland / open forest wetland in the Nandewar and Brigalow Belt South Bioregions	-	-
VCA 598: Silver-leaved Ironbark - White Box - White Cypress Pine viney scrub woodland in the Nandewar and Brigalow Belt South Bioregions	-	-
VCA 594: Silver-leaved Ironbark - White Cypress Pine shrubby open forest of Brigalow Belt South and Nandewar Bioregions	-	-
VCA 460: Tumbledown Gum - ironbark - Porcupine Grass hummock grassland / low woodland of the Mount Kaputar to Bingara region, Nandewar Bioregion	-	-
VCA 562: Tumbledown Red Gum - White Cypress Pine - Caley's Ironbark shrubby open forest of the Nandewar and western New England Tablelands Bioregions	-	-
VCA 597: White Box - cypress pine - Silver-leaved Ironbark shrub grass open forest / woodland of the northern Brigalow Belt South and Nandewar Bioregions	-	-

Bingara State Conservation Area

Summary statistics - general

NSW Vegetation classification and assessment (VCA) type	NSW TSC Act ¹	EPBC Act ²
VCA 564: White Cypress Pine - Silver-leaved Ironbark - Caley's Ironbark open forest of the central Nandewar and western New England Tablelands Bioregions	-	-
VCA 547: Wild Quince - Mock Olive - Rusty Fig - Iamboto - Sweet Pittosporum dry rainforest of rocky and scree areas of the Nandewar and New England Tablelands Bioregions	yes	yes

¹ NSW *Threatened Species Conservation Act 1995*

² Australian Government *Environment Protection and Biodiversity Conservation Act 1999*

Native species recorded		Number	
Flora		335	
Fauna		38	
Threatened species			
Scientific name	Common name	NSW TSC Act ¹	EPBC Act ²
Flora			
-	-	-	-
Fauna			
<i>Alectura lathami</i>	Australian brush-turkey population in the Nandewar and Brigalow Belt South Bioregions	E2	-
<i>Neophema pulchella</i>	Turquoise parrot	V	-
<i>Climacteris picumnus victoriae</i>	Brown treecreeper (eastern subspecies)	V	-
<i>Chthonicola sagittata</i>	Speckled warbler	V	-
<i>Melithreptus gularis gularis</i>	Black-chinned honeyeater (eastern subspecies)	V	-
<i>Stagonopleura guttata</i>	Diamond firetail	V	-
<i>Petaurus norfolcensis</i>	Squirrel glider	V	-

Cultural heritage - Aboriginal and non-Aboriginal	Number of sites
AHIMS registered sites	2
Heritage items or places of historic significance	no information available

Current management plans	Status
Plan of management	no
Fire management strategy	June 2008
Regional pest management strategy	Northern plains region 2012-17

Fire history	Prescribed burn (hectares)	Wildfire (hectares)
2011-12	6	-

Mining	Number of titles
Exploration	1 petroleum, 3 mineral
Application	1 petroleum

Apiarist sites
1