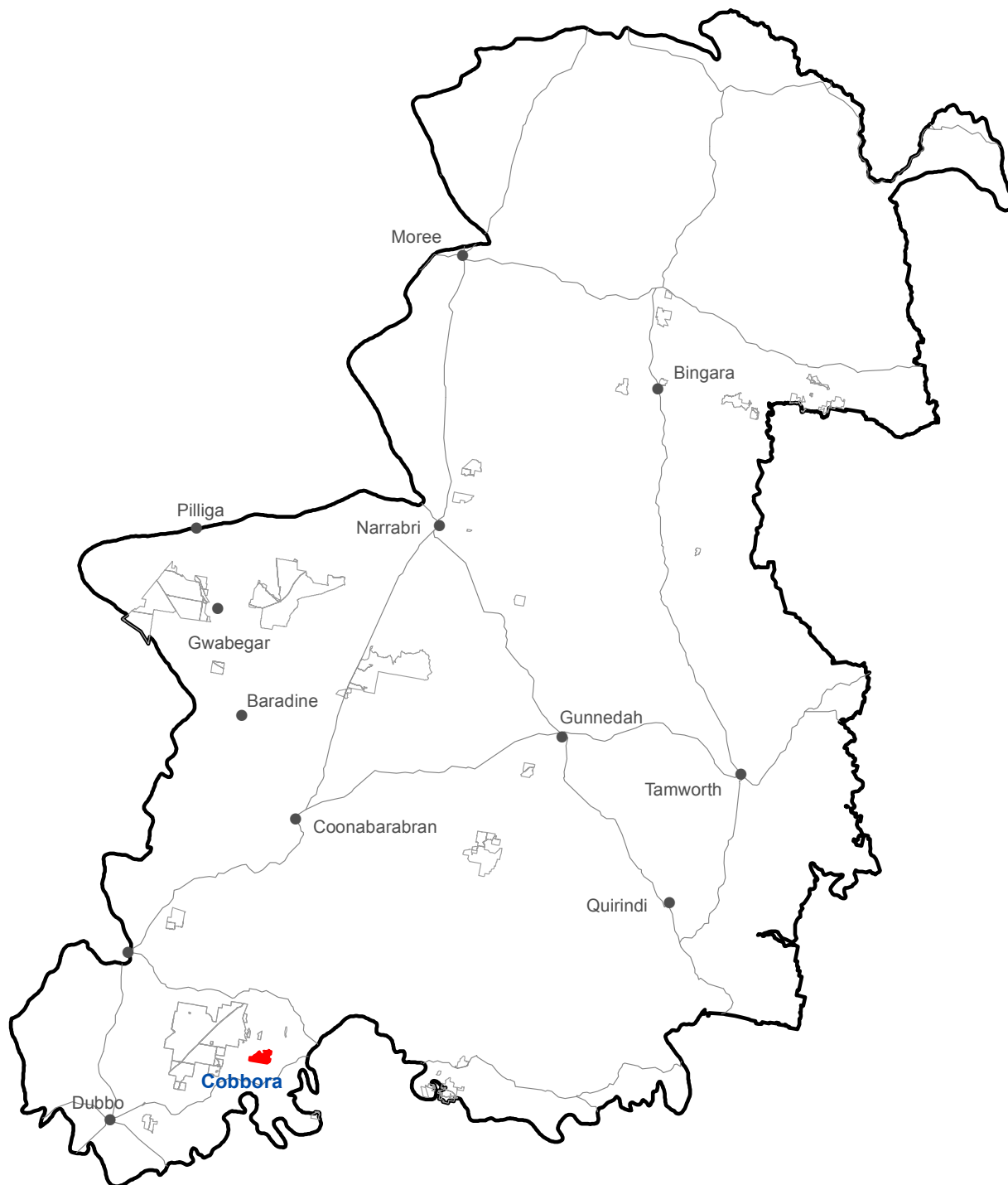


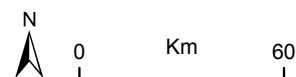
Cobbora State Conservation Area (2,261 hectares)

Location



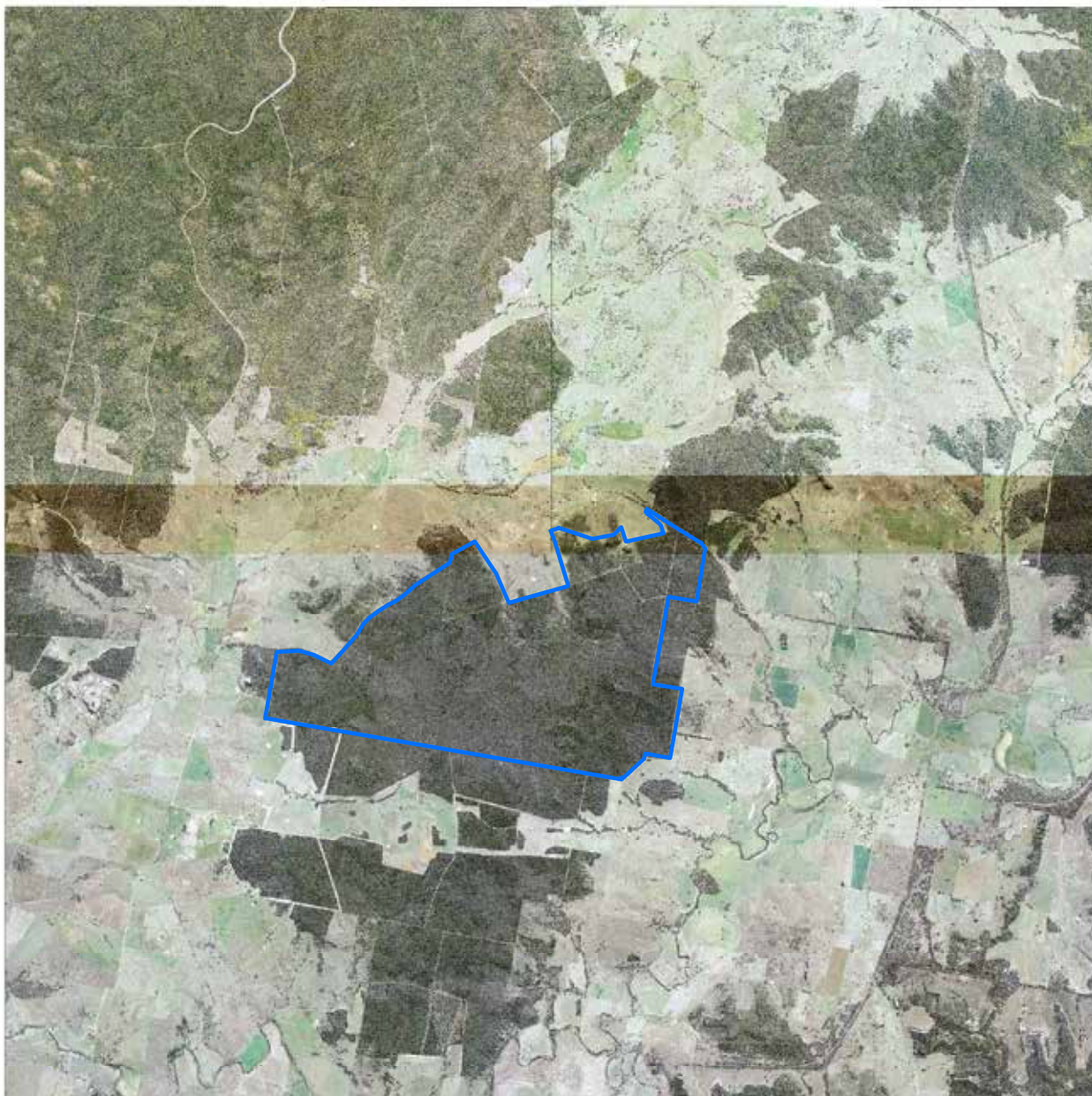
- Cobbora State Conservation Area
- Other Zone 3 State Conservation Areas


Spatial data courtesy of Office of Environment and Heritage.



Cobbara State Conservation Area

Aerial



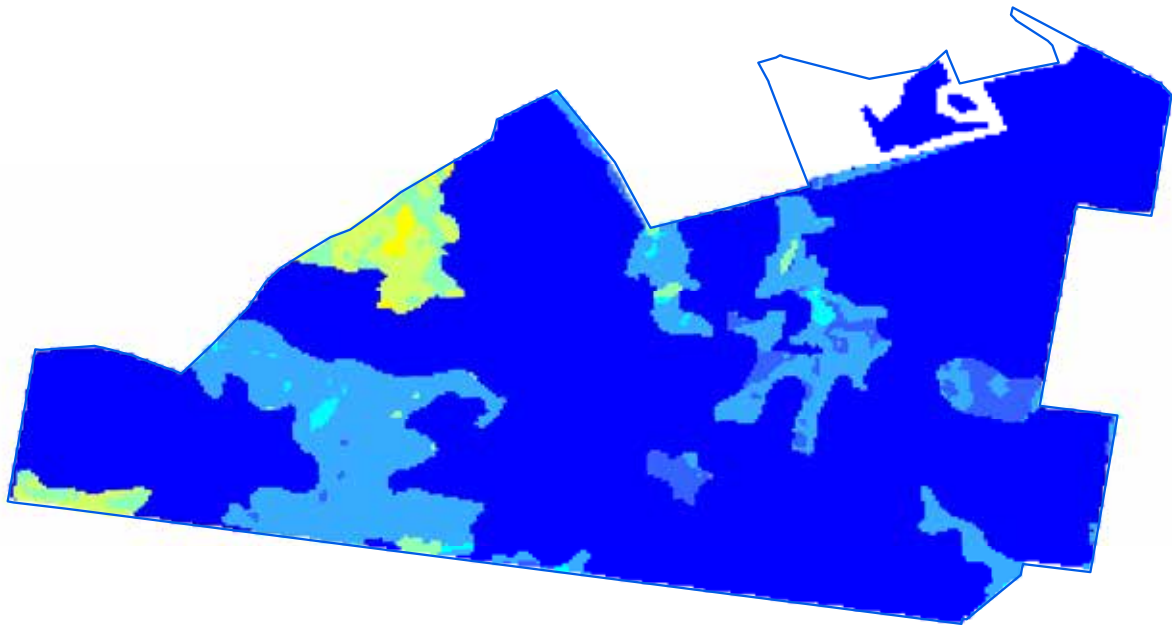
 Cobbara State Conservation Area boundary

ADS40 Airborne Digital Sensor data.
Spatial data courtesy of Office of Environment and Heritage.
Spatial analysis by Remote Census Pty Ltd (2014).



Cobbora State Conservation Area

Predicted location - white cypress pine

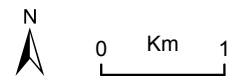


Relative probability (%) of white cypress pine occurrence

- 0 - 10
- 10 - 20
- 20 - 30
- 30 - 40
- 40 - 50
- 50 - 60
- 60 - 70
- 70 - 80
- 80 - 90
- 90 - 100

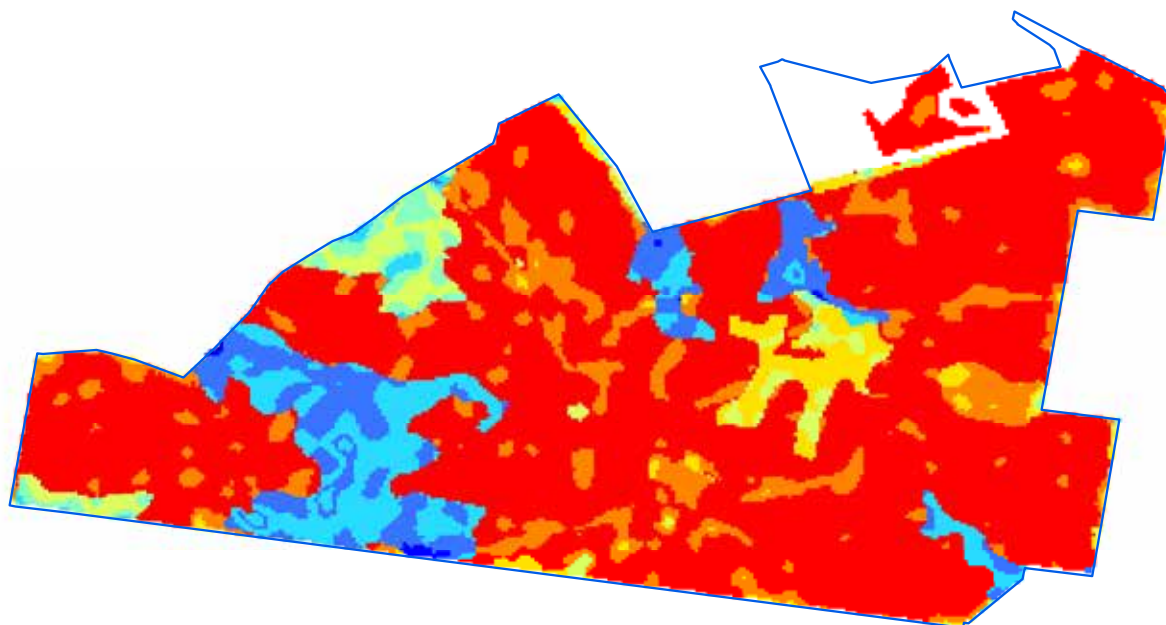
Cobbora State Conservation Area boundary

Spatial data courtesy of Office of Environment and Heritage.
Spatial analysis by Eco Logical Australia Pty Ltd.



Cobbora State Conservation Area

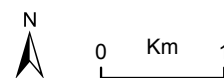
Predicted location - black cypress pine



Relative probability (%) of black cypress pine occurrence

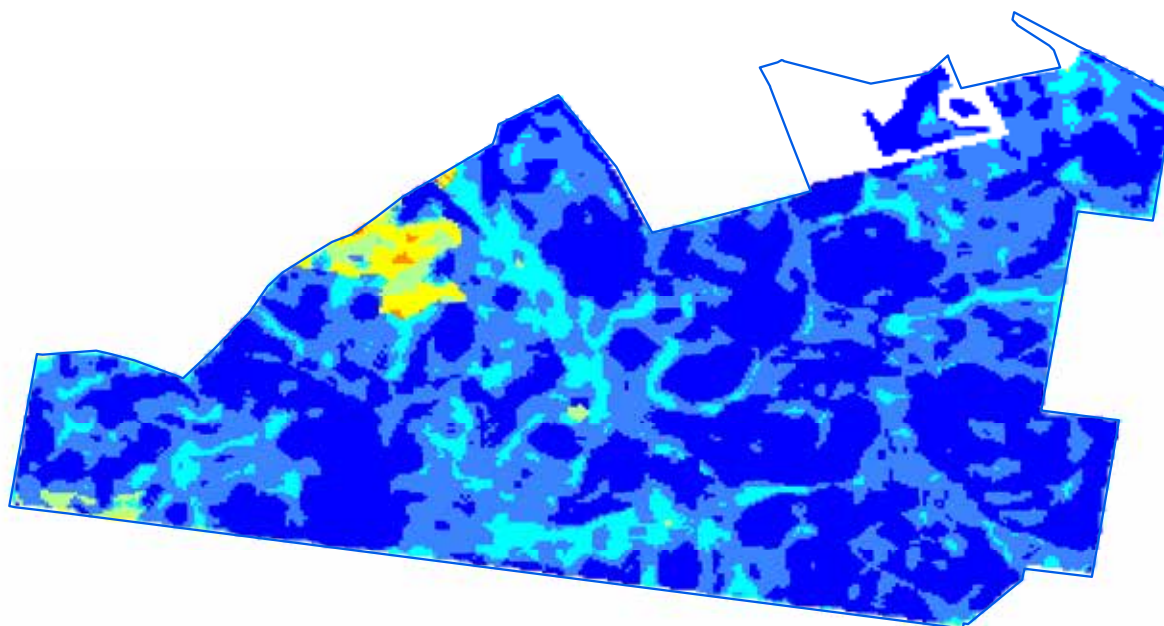
- 0 - 10
- 10 - 20
- 20 - 30
- 30 - 40
- 40 - 50
- 50 - 60
- 60 - 70
- 70 - 80
- Cobbora State Conservation Area boundary

Spatial data courtesy of Office of Environment and Heritage.
Spatial analysis by Eco Logical Australia Pty Ltd.

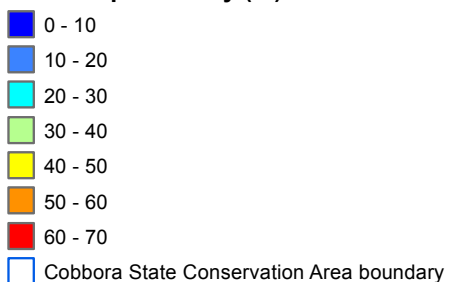


Cobbara State Conservation Area

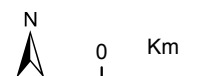
Predicted location - bulloak



Relative probability (%) of bulloak occurrence

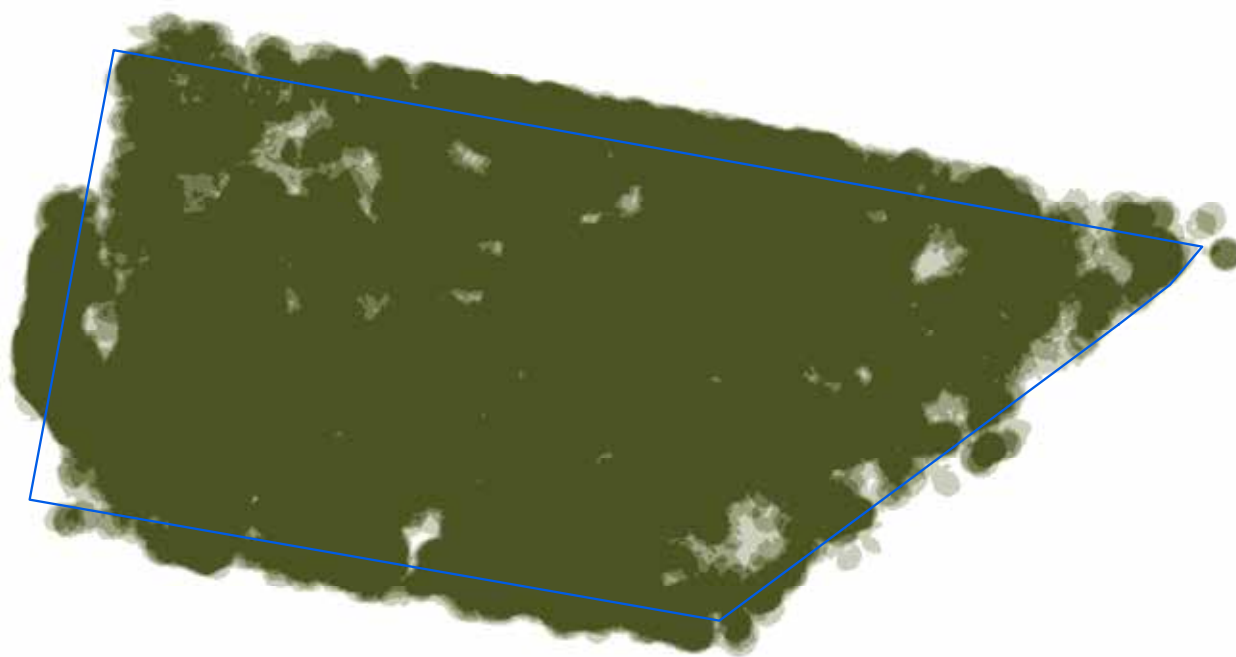



Spatial data courtesy of Office of Environment and Heritage.
Spatial analysis by Eco Logical Australia Pty Ltd.



Cobbora State Conservation Area

Continuous canopy density surface - cypress pine



 More dense canopy
Less dense canopy

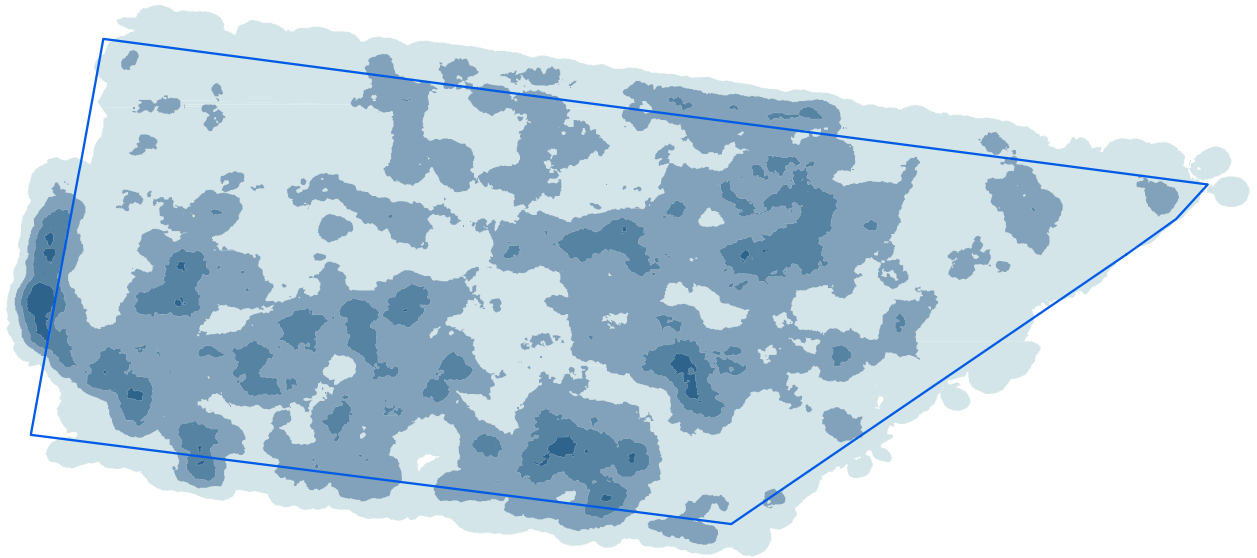
 Bullawa Creek State Conservation Area boundary

ADS40 Airborne Digital Sensor data.
Spatial data courtesy of Office of Environment and Heritage.
Spatial analysis by Remote Census Pty Ltd (2014).



Cobbora State Conservation Area

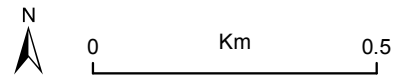
Discrete canopy density classes - cypress pine



Canopy density classes

- Class 0 (little or no cypress pine detected)
- Density slice range 1 to 10
- Density slice range 10 to 20
- Density slice range 20 to 30
- Density slice range 30 to 100
- Bullawa Creek State Conservation Area boundary

ADS40 Airborne Digital Sensor data.
Spatial data courtesy of Office of Environment and Heritage.
Spatial analysis by Remote Census Pty Ltd (2014).



Cobbora State Conservation Area

Summary statistics - spatial analysis

| Area of cypress canopy classes (excludes areas affected by wildfire since 2009) | |
|---|------------------|
| Class | Total (hectares) |
| Class 0 (little or no cypress detected) | 794 |
| Class 1 (1-10 percent) | 1,273 |
| Class 2 (11-20 percent) | 234 |
| Class 3 (21-30 percent) | 24 |
| Class 4 (>31 percent) | 3 |

| Issues and confidence levels for ADS40 spatial products | | |
|---|--------|-------------------|
| ADS40 image quality | Issues | Confidence levels |
| Medium-high | - | Higher |

Cobbora State Conservation Area

Summary statistics - general

| Lindsay type | Area (hectares) | Proportion of total (%) |
|--------------|-----------------|-------------------------|
| Not typed | 2,261 | - |

| NSW Vegetation classification and assessment (VCA) type | NSW TSC Act ¹ | EPBC Act ² |
|--|--------------------------|-----------------------|
| VCA 467: Blue-leaved Ironbark - Black Cypress Pine shrubby sandstone open forest in the southern Brigalow Belt South Bioregion (including Goonoo) | - | - |
| VCA 473: Red gum - Rough-barked Apple - Narrow-leaved Ironbark - cypress pine grassy open forest on flats and drainage lines in the Goonoo and surrounding forests, southern Brigalow Belt South Bioregion | - | - |
| VCA 440: Red Stringybark - Narrow-leaved Ironbark - Black Cypress Pine - hill red gum sandstone woodland of southern NSW Brigalow Belt South Bioregion | - | - |
| VCA 281: Rough-Barked Apple - red gum - Yellow Box woodland on alluvial clay to loam soils on valley flats in the northern NSW South West Cypress and Brigalow Belt South Bioregions | yes | yes |
| VCA 469: White Cypress Pine - Narrow-leaved Ironbark - Buloke grassy open forest of the Dubbo region, southern Brigalow Belt South Bioregion | - | - |

¹ NSW *Threatened Species Conservation Act 1995*

² Australian Government *Environment Protection and Biodiversity Conservation Act 1999*

| Native species recorded | | Number | |
|----------------------------------|-----------------------|--------------------------|-----------------------|
| Flora | | 231 | |
| Fauna | | 98 | |
| Threatened species | | | |
| Scientific name | Common name | NSW TSC Act ¹ | EPBC Act ² |
| Flora | | | |
| <i>Zieria ingramii</i> | Keith's zieria | E1 | E |
| <i>Philotheca ericifolia</i> | - | - | V |
| Fauna | | | |
| <i>Calyptorhynchus lathami</i> | Glossy black-cockatoo | V | - |
| <i>Ninox connivens</i> | Barking owl | V | - |
| <i>Chthonicola sagittata</i> | Speckled warbler | V | - |
| <i>Daphoenositta chrysoptera</i> | Varied sittella | V | - |

| Cultural heritage - Aboriginal and non-Aboriginal | Number of sites |
|---|-----------------|
| AHIMS registered sites | 0 |
| Heritage items or places of historic significance | 0 |

| Current management plans | Status |
|-----------------------------------|--------------------------------|
| Plan of management | no |
| Fire management strategy | no |
| Regional pest management strategy | Northern plains region 2012-17 |

Cobbora State Conservation Area

Summary statistics - general

| Fire history | Prescribed burn (hectares) | Wildfire (hectares) |
|--------------|-------------------------------|------------------------|
| 2011-12 | 9 | - |

| Mining | Number of titles |
|-------------|---------------------|
| Exploration | 1 coal, 1 petroleum |
| Application | none |

| Apiarist sites |
|----------------|
| None |