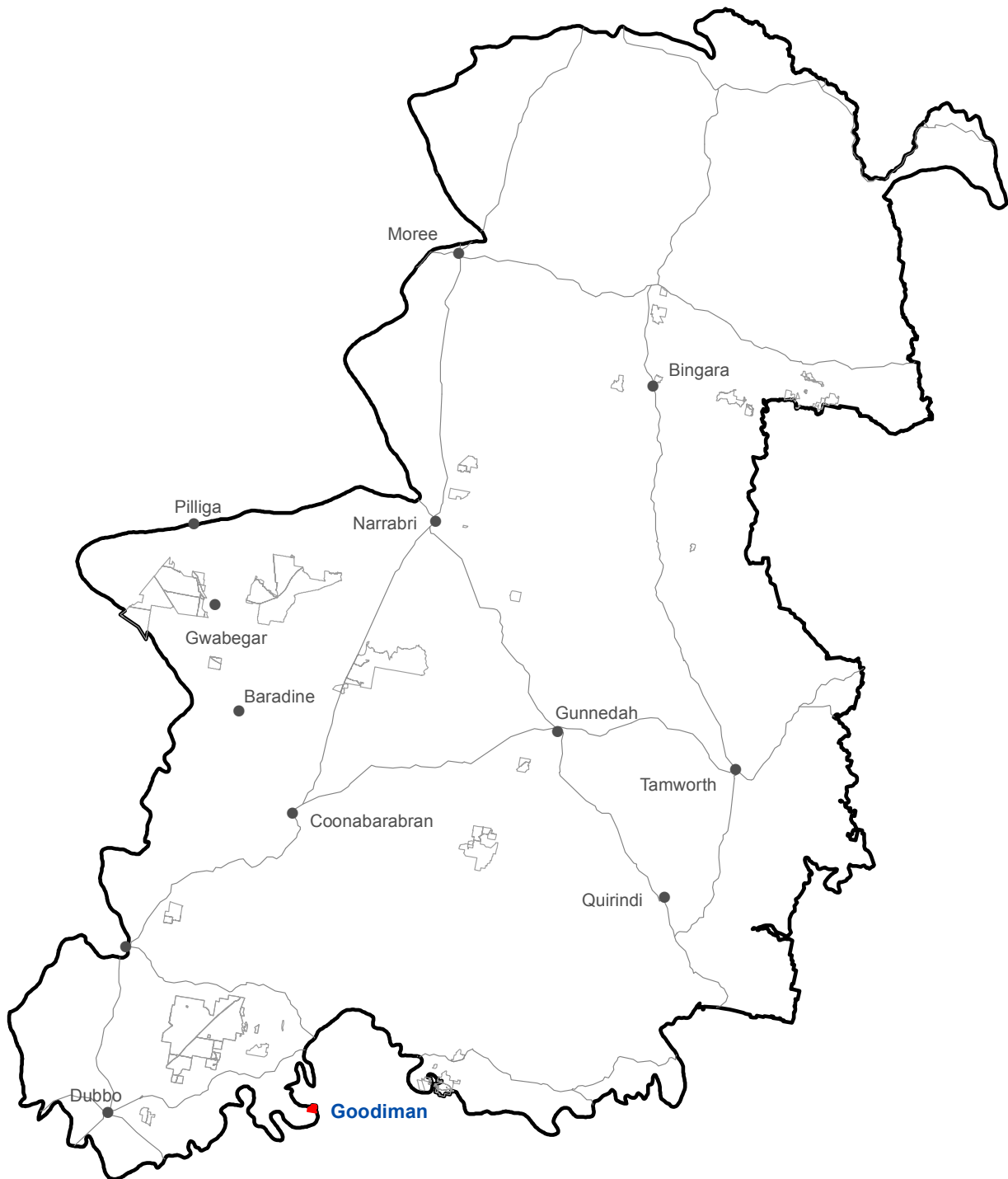


Goodiman State Conservation Area (569 hectares)

Location



- Goodiman CCA Zone 3 State Conservation Area
- Other Zone 3 State Conservation Areas


Spatial data courtesy of Office of Environment and Heritage.



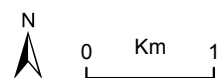
Goodiman State Conservation Area

Aerial



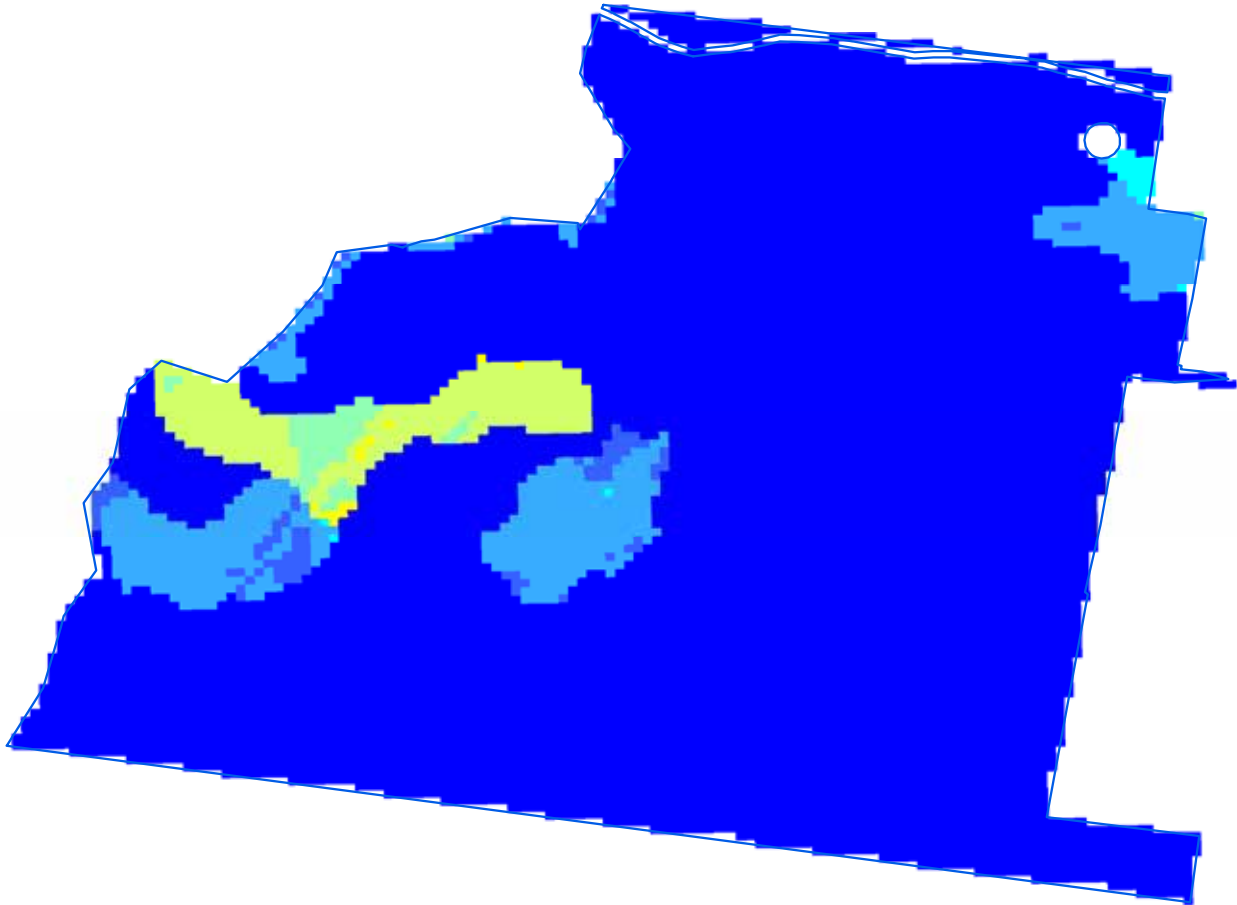
 Goodiman State Conservation Area boundary

ADS40 Airborne Digital Sensor data.
Spatial data courtesy of Office of Environment and Heritage.
Spatial analysis by Remote Census Pty Ltd (2014).

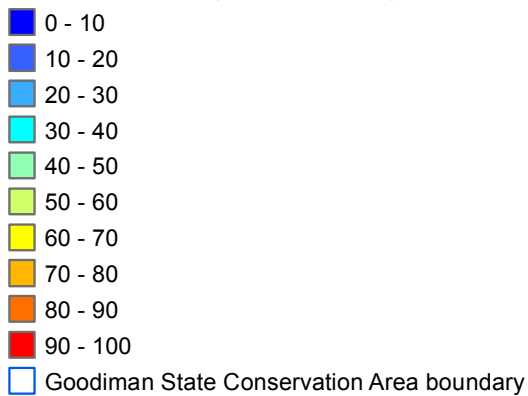


Goodiman State Conservation Area

Predicted location - white cypress pine



Relative probability (%) of white cypress pine occurrence

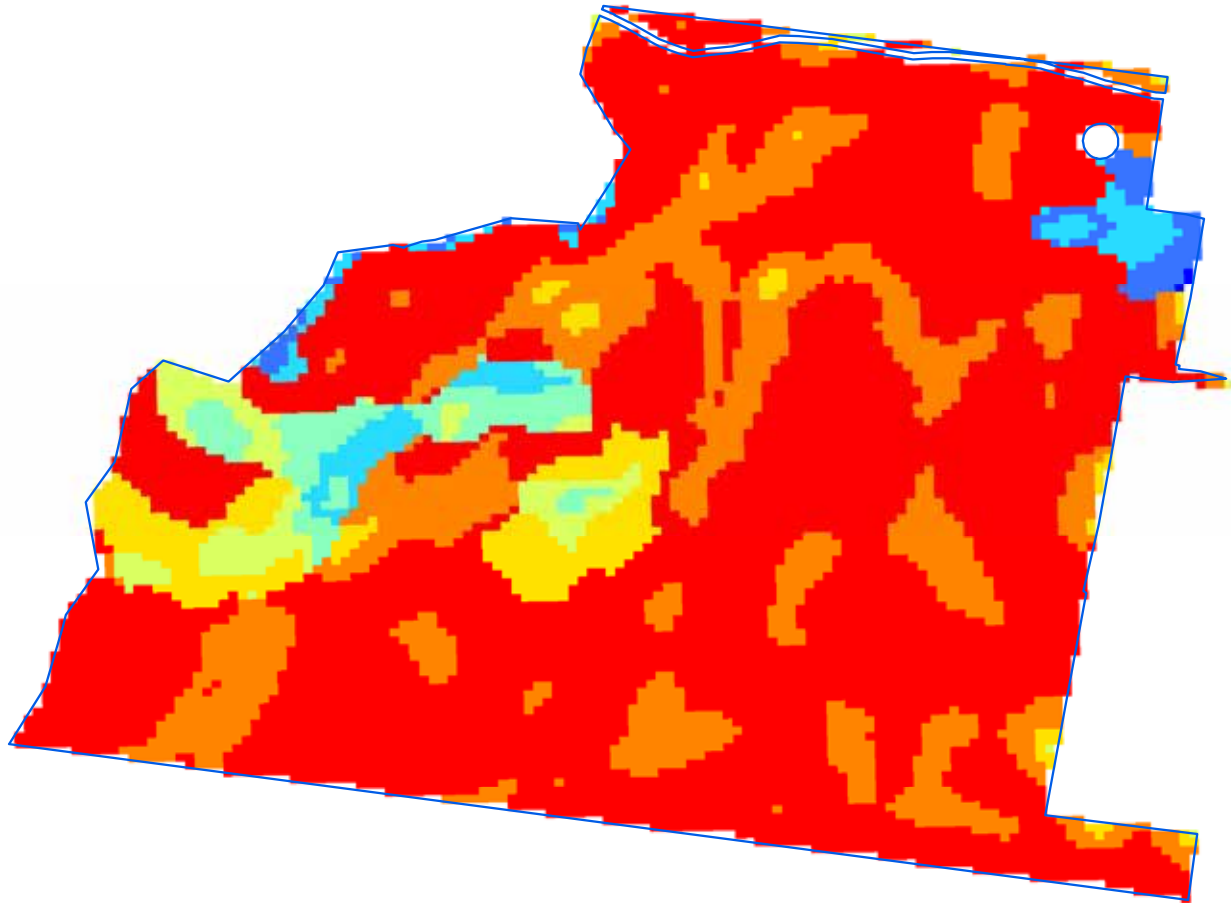


Spatial data courtesy of Office of Environment and Heritage.
Spatial analysis by Eco Logical Australia Pty Ltd.



Goodiman State Conservation Area

Predicted location - black cypress pine



Relative probability (%) of black cypress pine occurrence

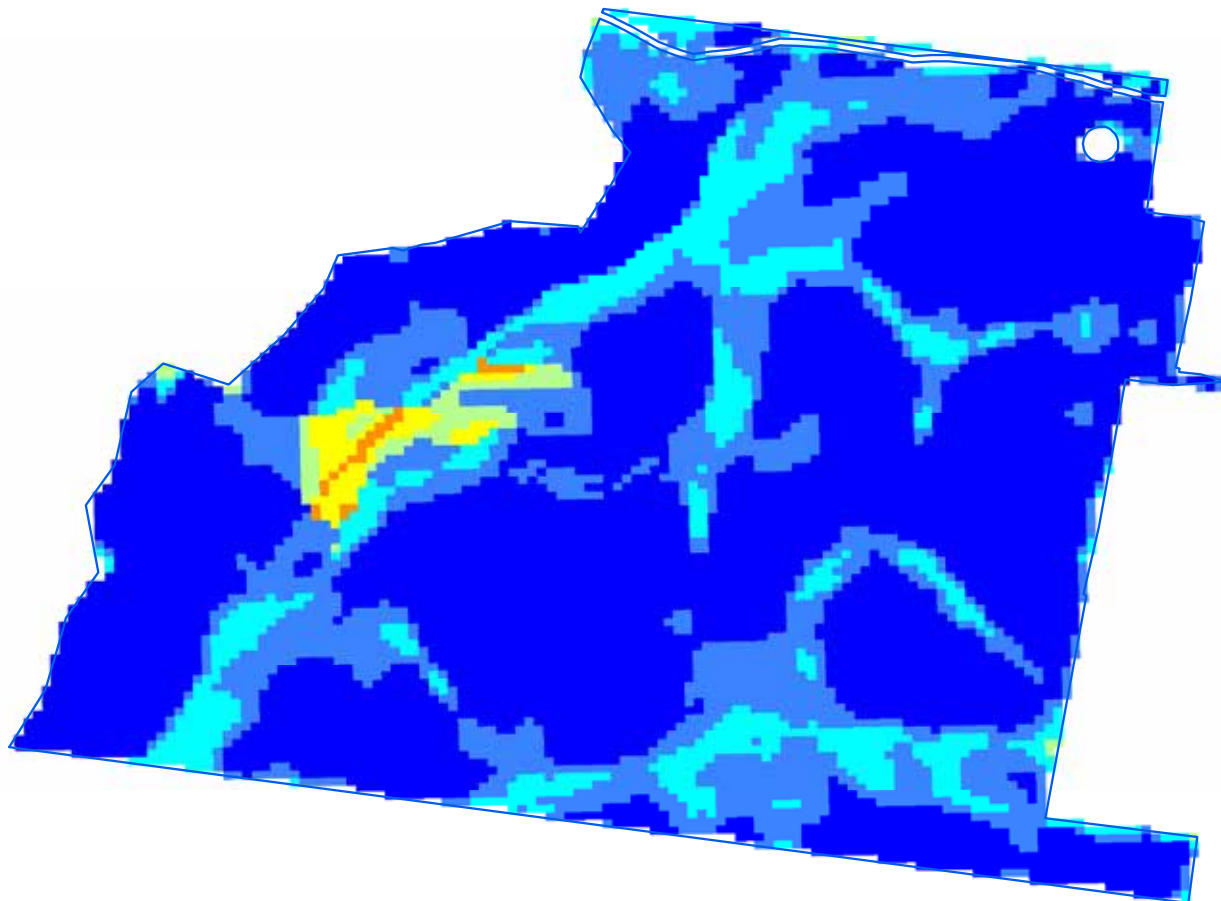
- 0 - 10
- 10 - 20
- 20 - 30
- 30 - 40
- 40 - 50
- 50 - 60
- 60 - 70
- 70 - 80
- Goodiman State Conservation Area boundary

Spatial data courtesy of Office of Environment and Heritage.
Spatial analysis by Eco Logical Australia Pty Ltd.



Goodiman State Conservation Area

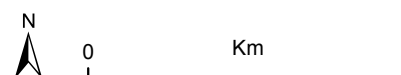
Predicted location - bulloak



Relative probability (%) of bulloak occurrence

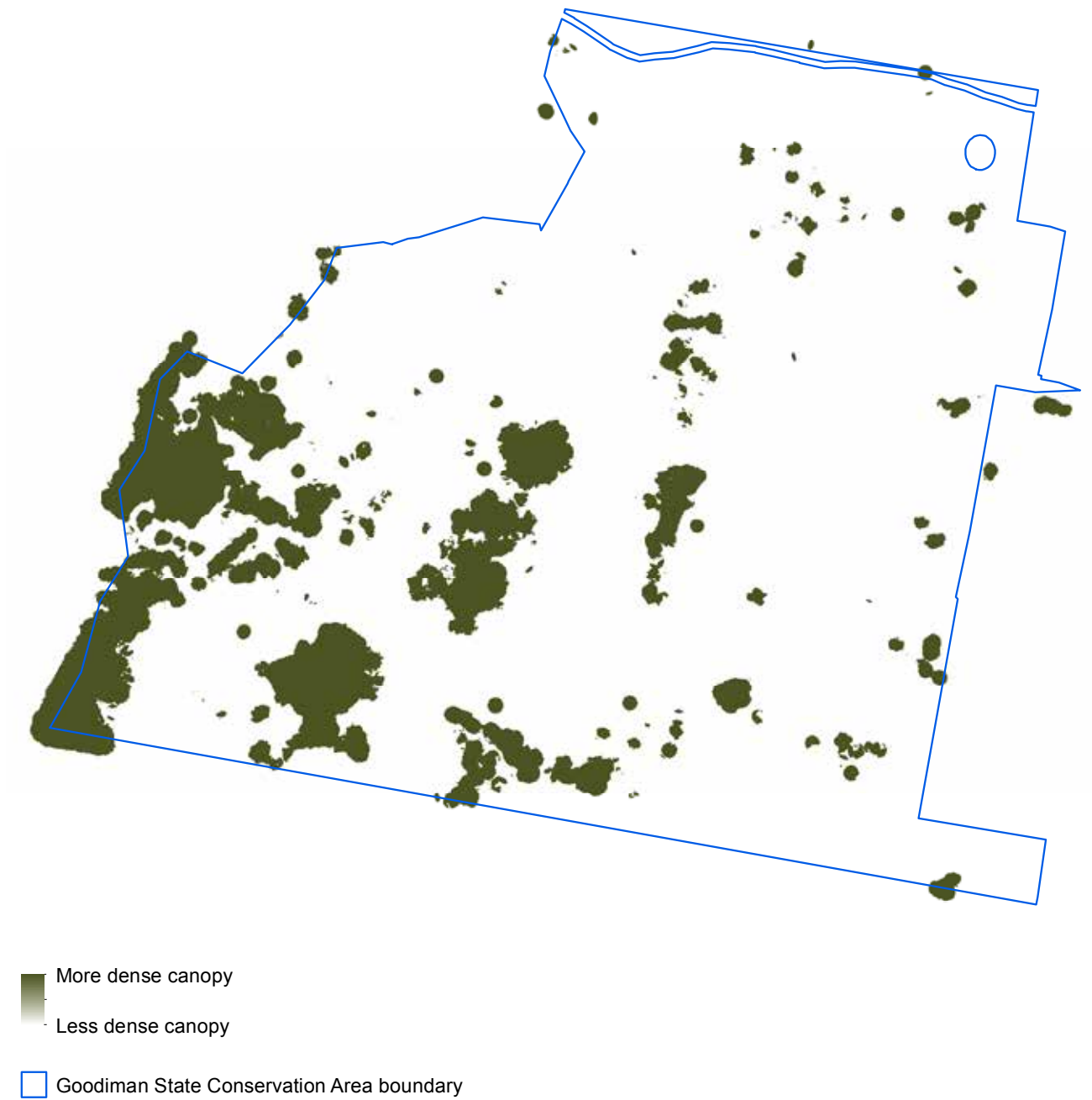
- 0 - 10
- 10 - 20
- 20 - 30
- 30 - 40
- 40 - 50
- 50 - 60
- 60 - 70
- Goodiman State Conservation Area boundary

Spatial data courtesy of Office of Environment and Heritage.
Spatial analysis by Eco Logical Australia Pty Ltd.



Goodiman State Conservation Area

Continuous canopy density surface - cypress pine

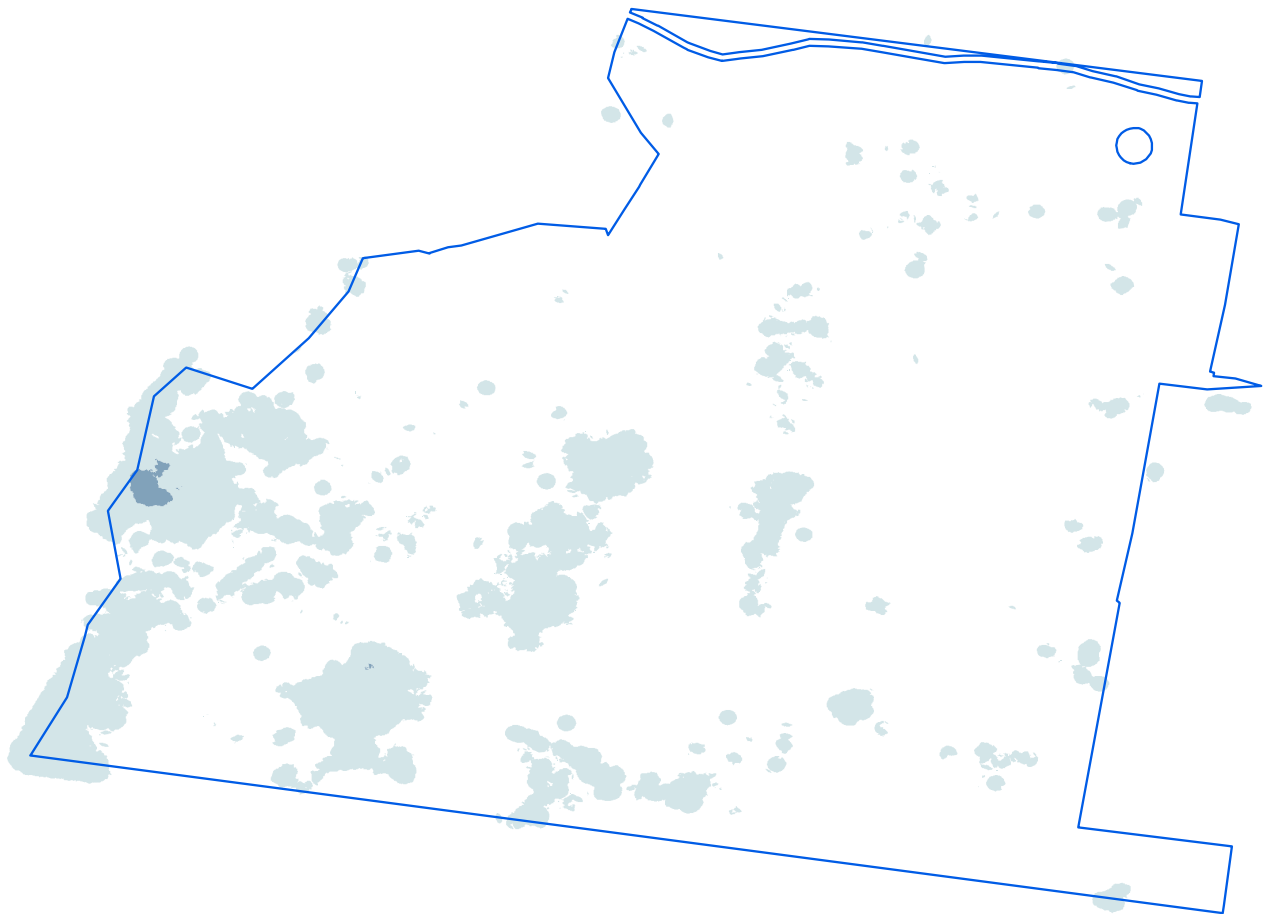


ADS40 Airborne Digital Sensor data.
Spatial data courtesy of Office of Environment and Heritage.
Spatial analysis by Remote Census Pty Ltd (2014).



Goodiman State Conservation Area

Discrete canopy density classes - cypress pine



Canopy density classes

- Class 0 (little or no cypress pine detected)
- Density slice range 1 to 10
- Density slice range 10 to 20
- Goodiman State Conservation Area boundary

ADS40 Airborne Digital Sensor data.
Spatial data courtesy of Office of Environment and Heritage.
Spatial analysis by Remote Census Pty Ltd (2014).



Goodiman State Conservation Area

Summary statistics - spatial analysis

Area of cypress canopy classes (excludes areas affected by wildfire since 2009)	
Class	Total (hectares)
Class 0 (little or no cypress detected)	491
Class 1 (1-10 percent)	86
Class 2 (11-20 percent)	1
Class 3 (21-30 percent)	0
Class 4 (>31 percent)	0

Issues and confidence levels for ADS40 spatial products		
ADS40 image quality	Issues	Confidence levels
High	-	Higher

Goodiman State Conservation Area

Summary statistics - general

Lindsay types	Area (hectares)	Proportion of total (%)
Not typed	565	-

NSW Vegetation classification and assessment (VCA) type	NSW TSC Act ¹	EPBC Act ²
VCA 467: Blue-leaved Ironbark - Black Cypress Pine shrubby sandstone open forest in the southern Brigalow Belt South Bioregion (including Goonoo)	-	-
VCA 477: Inland Scribbly Gum - Red Stringybark - Black Cypress Pine - Red Ironbark open forest on sandstone hills in the southern Brigalow Belt South and northern NSW South West Cypress Bioregions	-	-
VCA 479: Narrow-leaved Ironbark- Black Cypress Pine - stringybark +- Grey Gum +- Narrow-leaved Wattle shrubby open forest on sandstone hills in the southern Brigalow Belt South - Sydney Basin Bioregions	-	-
VCA 478: Red Ironbark - Black Cypress Pine - stringybark -/+ Narrow-leaved Wattle shrubby open forest on sandstone in the Gulgong - Mendooran region, southern Brigalow Belt South Bioregion	-	-
VCA 440: Red Stringybark - Narrow-leaved Ironbark - Black Cypress Pine - hill red gum sandstone woodland of southern NSW Brigalow Belt South Bioregion	-	-
VCA 281: Rough-Barked Apple - red gum - Yellow Box woodland on alluvial clay to loam soils on valley flats in the northern NSW South West Cypress and Brigalow Belt South Bioregions	yes	yes
VCA 461: Tumbledown Gum woodland on hills in the northern NSW South-western Slopes and southern Brigalow Belt South Bioregions	-	-

¹ NSW *Threatened Species Conservation Act 1995*

² Australian Government *Environment Protection and Biodiversity Conservation Act 1999*

Native species recorded		Number	
Flora		102	
Fauna		5	
Threatened species			
Scientific name	Common name	NSW TSC Act ¹	EPBC Act ²
Flora			
<i>Acacia ausfeldii</i>	Ausfeld's wattle	V	-
Fauna			
<i>Ninox strenua</i>	Powerful owl	V	-

Cultural heritage - Aboriginal and non-Aboriginal	Number of sites
AHIMS registered sites	0
Heritage items or places of historic significance	0

Current management plans	Status
Plan of management	no
Fire management strategy	June 2009
Regional pest management strategy	Northern plains region 2012-17

Goodiman State Conservation Area

Summary statistics - general

Fire history	Prescribed burn (hectares)	Wildfire (hectares)
2006-07	179	-
2009-10	-	1

Mining	Number of titles
Exploration	2 coal, 1 mineral
Application	1 petroleum

Apiarist sites
None