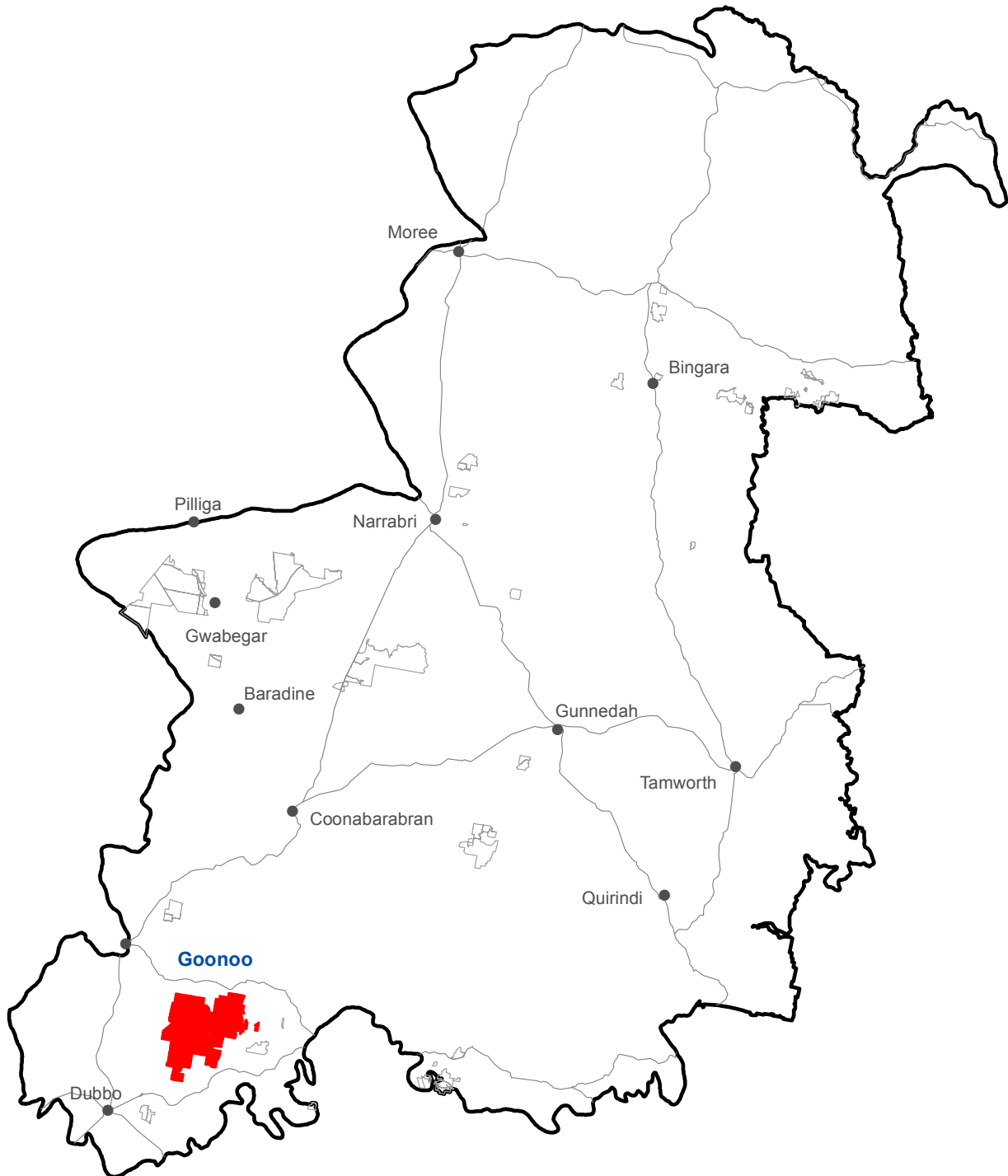


Goonoo State Conservation Area (54,522 hectares)

Location



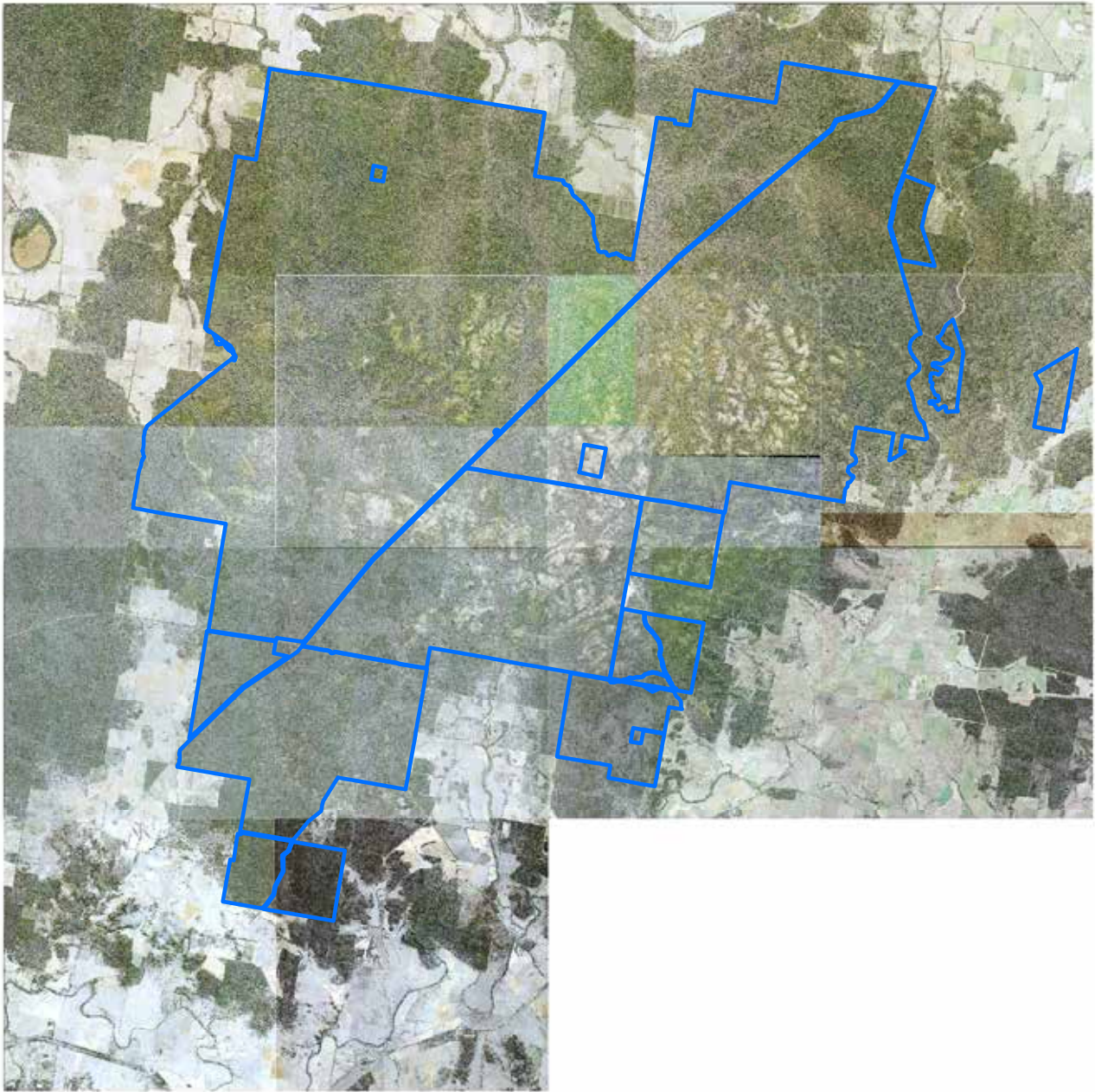
- Goonoo State Conservation Area
- Other Zone 3 State Conservation Areas


Spatial data courtesy of Office of Environment and Heritage.



Goonoo State Conservation Area

Aerial



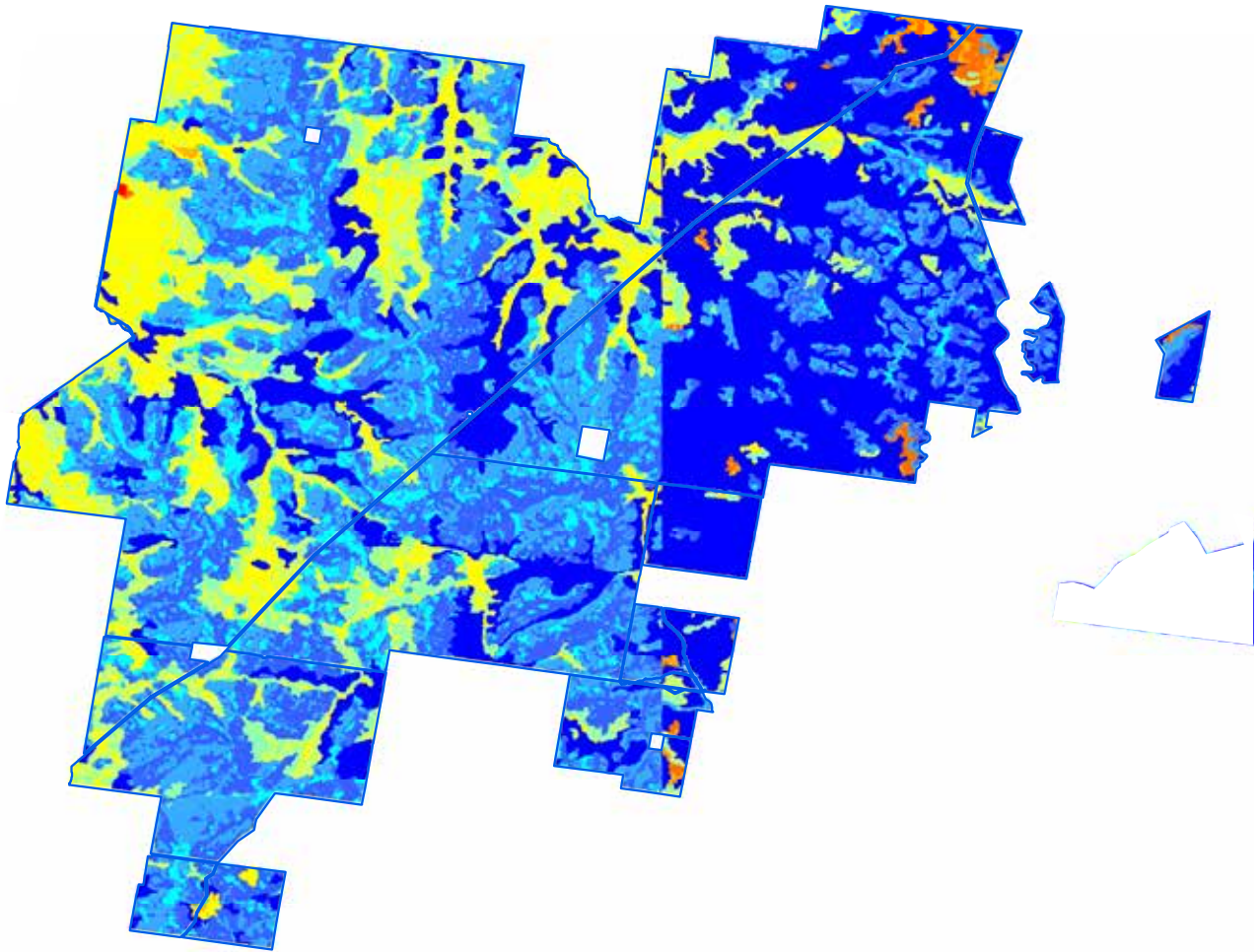
 Goonoo State Conservation Area boundary

ADS40 Airborne Digital Sensor data.
Spatial data courtesy of Office of Environment and Heritage.
Spatial analysis by Remote Census Pty Ltd (2014).



Goonoo State Conservation Area

Predicted location - white cypress pine

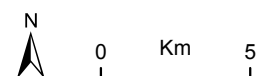


Relative probability (%) of white cypress pine occurrence

- 0 - 10
- 10 - 20
- 20 - 30
- 30 - 40
- 40 - 50
- 50 - 60
- 60 - 70
- 70 - 80
- 80 - 90
- 90 - 100

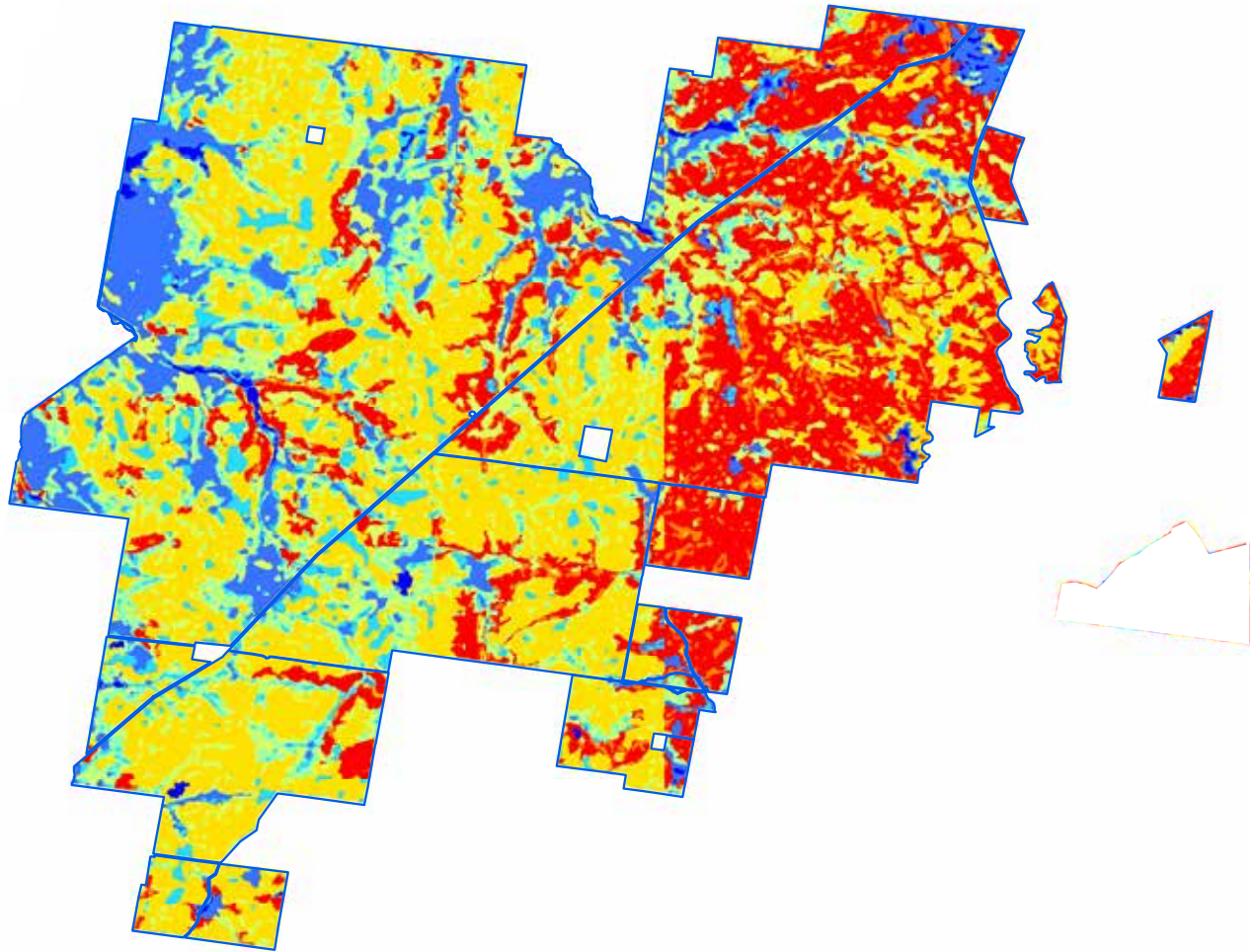
□ Goonoo State Conservation Area boundary

Spatial data courtesy of Office of Environment and Heritage.
Spatial analysis by Eco Logical Australia Pty Ltd.



Goonoo State Conservation Area

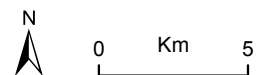
Predicted location - black cypress pine



Relative probability (%) of black cypress pine occurrence

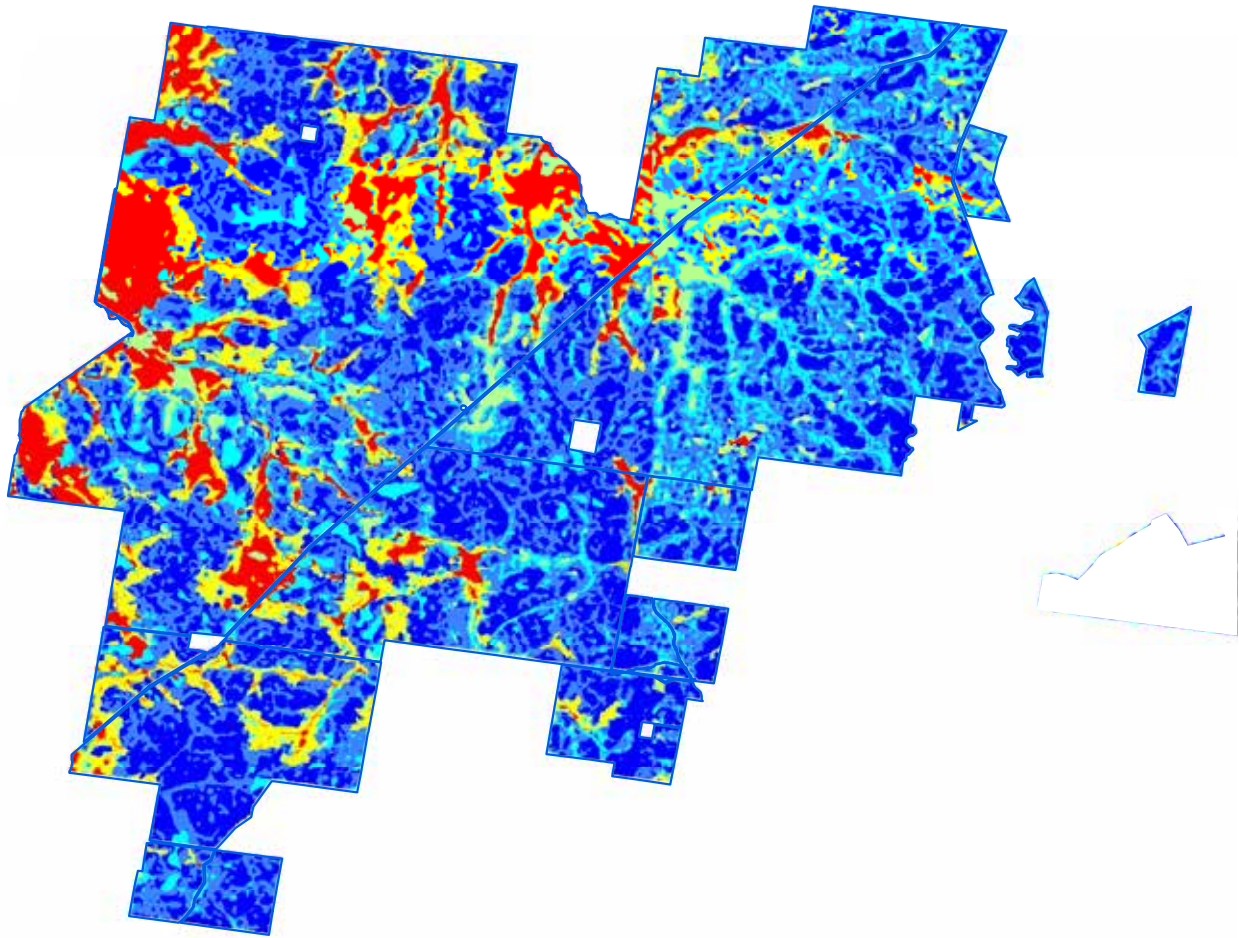
- 0 - 10
- 10 - 20
- 20 - 30
- 30 - 40
- 40 - 50
- 50 - 60
- 60 - 70
- 70 - 80
- Goonoo State Conservation Area boundary

Spatial data courtesy of Office of Environment and Heritage.
Spatial analysis by Eco Logical Australia Pty Ltd.



Goonoo State Conservation Area

Predicted location - bulloak

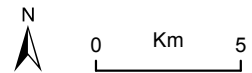


Relative probability (%) of bulloak occurrence

- 0 - 10
- 10 - 20
- 20 - 30
- 30 - 40
- 40 - 50
- 50 - 60
- 60 - 70

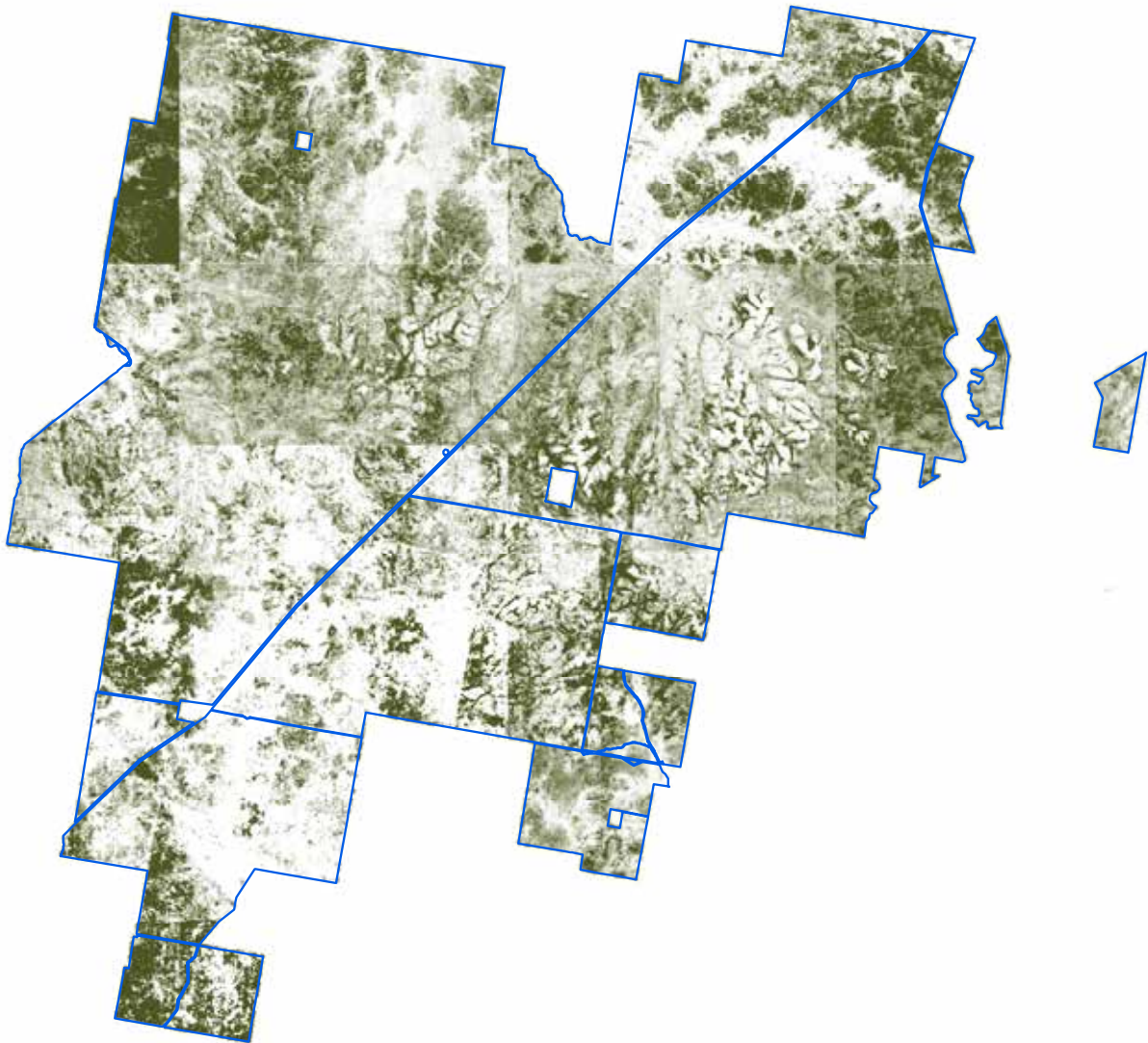
□ Goonoo State Conservation Area boundary

Spatial data courtesy of Office of Environment and Heritage.
Spatial analysis by Eco Logical Australia Pty Ltd.



Goonoo State Conservation Area

Continuous canopy density surface - cypress pine



More dense canopy
Less dense canopy

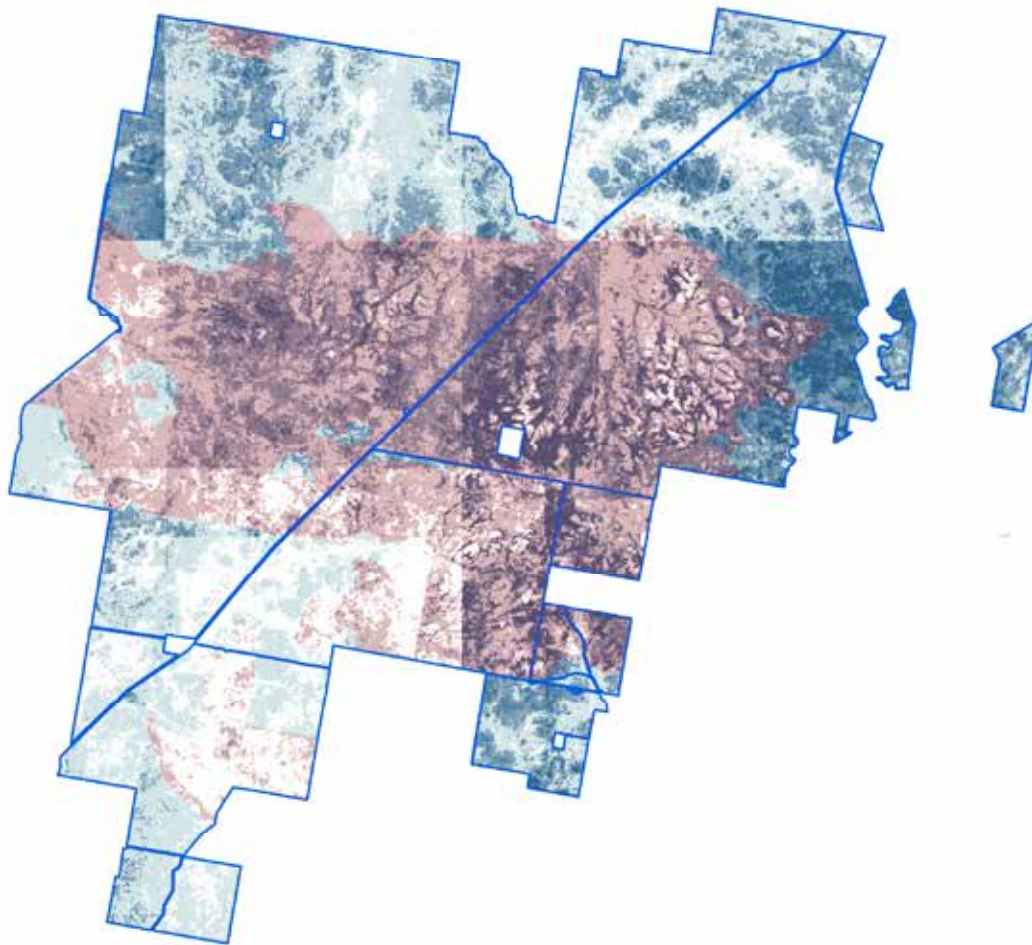
Goonoo State Conservation Area boundary

ADS40 Airborne Digital Sensor data.
Spatial data courtesy of Office of Environment and Heritage.
Spatial analysis by Remote Census Pty Ltd (2014).



Goonoo State Conservation Area

Discrete canopy density classes - cypress pine

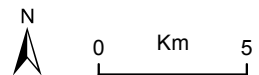


Wildfire since 2004-05

Canopy density classes

- Class 0 (little or no cypress pine detected)
- Density slice range 1 to 10
- Density slice range 10 to 20
- Density slice range 20 to 30
- Density slice range 30 to 100
- Goonoo State Conservation Area boundary

ADS40 Airborne Digital Sensor data.
Spatial data courtesy of Office of Environment and Heritage.
Spatial analysis by Remote Census Pty Ltd (2014).



Goonoo State Conservation Area

Summary statistics - spatial analysis

Area of cypress canopy classes (excludes areas affected by wildfire since 2009)	
Class	Total (hectares)
Class 0 (little or no cypress detected)	4,887
Class 1 (1-10 percent)	13,649
Class 2 (11-20 percent)	3,171
Class 3 (21-30 percent)	2,635
Class 4 (>31 percent)	1,142

Issues and confidence levels for ADS40 spatial products		
ADS40 image quality	Issues	Confidence levels
Low-high	Fire regrowth	Lower

Goonoo State Conservation Area

Summary statistics - general

Lindsay types	Area (hectares)	Proportion of total (%)
Heavy undergrowth with concentrations of Black Cypress Pine. Undergrowth species include Broom, various species of Acacia & Dwarf Oak, Sifton Bush Eucalypts (Lindsay Types)	2,042	4
Timber cover other than Pine (Lindsay Types)	7,056	13
Predominantly Eucalypt forest but containing some unidentified Cypress Pine (Lindsay Types)	10,593	20
Country carrying unidentified Cypress Pine: either pure, scattered or very scattered (Lindsay Types)	8,110	15
Broom, Various Species of Acacia and Dwarf Oak, Sifton Bush and Eucalypts: all very stunted (Lindsay Types)	3,264	6
Cleared	14	<1
Not Typed	23,232	43

NSW Vegetation classification and assessment (VCA) type	NSW TSC Act ¹	EPBC Act ²
VCA 467: Blue-leaved Ironbark - Black Cypress Pine shrubby sandstone open forest in the southern Brigalow Belt South Bioregion (including Goonoo)	-	-
VCA 141: Broombush - wattle very tall shrubland of the Pilliga to Goonoo regions, Brigalow Belt South Bioregion	-	-
VCA 471: Dwyers Red Gum - Black Cypress Pine - ironbark low woodland on sandstone hillcrests in the Dubbo - Gilgandra region, south-western Brigalow Belt South Bioregion	-	-
VCA 202: Fuzzy Box woodland on colluvium and alluvial flats in the Brigalow Belt South (including Pilliga) and Nandewar Bioregions	yes	-
VCA 256: Green Mallee tall mallee woodland on rises in the Pilliga - Goonoo regions, southern Brigalow Belt South Bioeregion	-	-
VCA 470: Mugga Ironbark - Narrow-leaved Ironbark - Buloke - Black Cypress Pine shrub grass open forest in the Goonoo forests and surrounding region, southern Brigalow Belt South Bioregion	-	-
VCA 468: Narrow-leaved Ironbark - Black Cypress Pine +/- Blakely's Red Gum shrubby open forest on sandstone low hills in the southern Brigalow Belt South Bioregion (including Goonoo)	-	-
VCA 473: Red gum - Rough-barked Apple - Narrow-leaved Ironbark - cypress pine grassy open forest on flats and drainage lines in the Goonoo and surrounding forests, southern Brigalow Belt South Bioregion	-	-
VCA 399: Red gum - Rough-barked Apple +/- tea tree sandy creek woodland (wetland) in the Pilliga - Goonoo sandstone forests, Brigalow Belt South Bioregion	-	-
VCA 440: Red Stringybark - Narrow-leaved Ironbark - Black Cypress Pine - hill red gum sandstone woodland of southern NSW Brigalow Belt South Bioregion	-	-
VCA 81: Western Grey Box - cypress pine shrub grass shrub tall woodland in the Brigalow Belt South Bioregion	yes	yes
VCA 405: White Bloodwood - Red Ironbark - cypress pine shrubby sandstone woodland of the Pilliga Scrub and surrounding regions	-	-
VCA 458: White Cypress Pine - Buloke - White Box shrubby open forest on hills in the Liverpool Plains - Dubbo region, Brigalow Belt South Bioregion	-	-
VCA 469: White Cypress Pine - Narrow-leaved Ironbark - Buloke grassy open forest of the Dubbo region, southern Brigalow Belt South Bioregion	-	-

¹ NSW *Threatened Species Conservation Act 1995*

² Australian Government *Environment Protection and Biodiversity Conservation Act 1999*

Goonoo State Conservation Area

Summary statistics - general

Native species recorded			Number
Flora			523
Fauna			184
Threatened species			
Scientific name	Common name	NSW TSC Act ¹	EPBC Act ²
Flora			
<i>Pomaderris queenslandica</i>	Scant pomaderris	E1	-
<i>Zieria ingramii</i>	Keith's zieria	E1	E
<i>Indigofera efoliata</i>	Leafless indigo	E1	E
<i>Tylophora linearis</i>	-	V	E
<i>Homoranthus darwinioides</i>	-	V	V
<i>Rulingia procumbens</i>	-	V	V
Fauna			
<i>Leipoa ocellata</i>	Malleefowl	E1	V
<i>Anthochaera phrygia</i>	Regent honeyeater	E4A	E
<i>Hieraaetus morphnoides</i>	Little eagle	V	-
<i>Falco subniger</i>	Black falcon	V	-
<i>Glossopsitta pusilla</i>	Little lorikeet	V	-
<i>Climacteris picumnus victoriae</i>	Brown treecreeper (eastern subspecies)	V	-
<i>Chthonicola sagittata</i>	Speckled warbler	V	-
<i>Grantiella picta</i>	Painted honeyeater	V	-
<i>Melithreptus gularis gularis</i>	Black-chinned honeyeater (eastern subspecies)	V	-
<i>Pomatostomus temporalis temporalis</i>	Grey-crowned babbler (eastern subspecies)	V	-
<i>Daphoenositta chrysoptera</i>	Varied sittella	V	-
<i>Pachycephala inornata</i>	Gilbert's whistler	V	-
<i>Melanodryas cucullata cucullata</i>	Hooded robin (south-eastern form)	V	-
<i>Dasyurus maculatus</i>	Spotted-tailed quoll	V	E
<i>Phascolarctos cinereus</i>	Koala	V	V
<i>Cercartetus nanus</i>	Eastern pygmy-possum	V	-
<i>Saccolaimus flaviventris</i>	Yellow-bellied sheath-tail-bat	V	-
<i>Chalinolobus picatus</i>	Little pied bat	V	-
<i>Nyctophilus corbeni</i>	Corben's long-eared bat	V	V
<i>Calyptorhynchus lathamii</i>	Glossy black-cockatoo	V	-
<i>Lophoictinia isura</i>	Square-tailed kite	V	-
<i>Neophema pulchella</i>	Turquoise parrot	V	-
<i>Ninox connivens</i>	Barking owl	V	-
<i>Tyto novaehollandiae</i>	Masked owl	V	-

Goonoo State Conservation Area

Summary statistics - general

Cultural heritage - Aboriginal and non-Aboriginal	Number of sites
AHIMS registered sites	97
Heritage items or places of historic significance	10

Current management plans	Status
Plan of management	no
Fire management strategy	August 2009
Regional pest management strategy	Northern plains region 2012-17

Fire history	Prescribed burn (hectares)	Wildfire (hectares)
2004-05	658	1,656
2005-06	3,329	247
2006-07	-	33
2007-08	-	24,851
2010-11	92	-
2011-12	611	-
2012-13	1,272	-

Mining	Number of titles
Exploration	2 coal, 1 petroleum, 1 mineral
Application	1 petroleum

Apiarist sites
128