

Goonoowigal State Conservation Area (1,055 hectares)

Location



-  Goonoowigal State Conservation Area
-  Other Zone 3 State Conservation Areas

Spatial data courtesy of Office of Environment and Heritage.



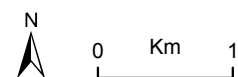
Goonoowigal State Conservation Area

Aerial



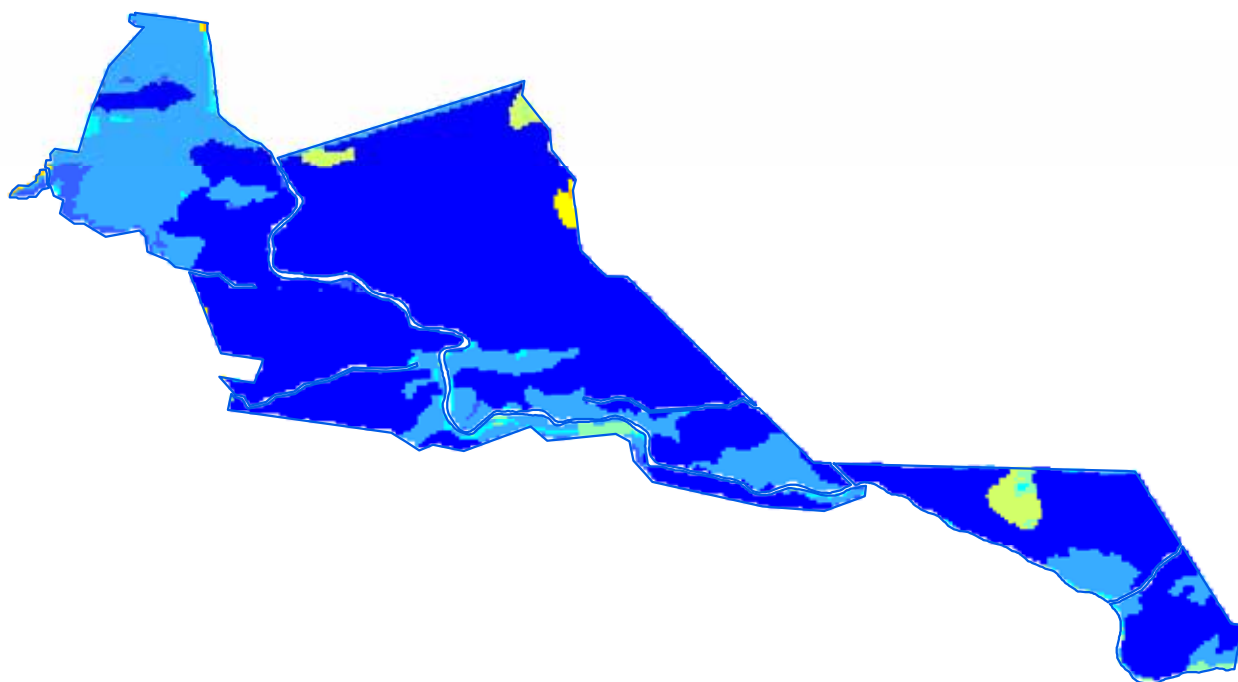
 Goonoowigal State Conservation Area boundary

ADS40 Airborne Digital Sensor data.
Spatial data courtesy of Office of Environment and Heritage.
Spatial analysis by Remote Census Pty Ltd (2014).



Goonoowigal State Conservation Area

Predicted location - white cypress pine

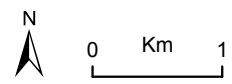


Relative probability (%) of white cypress pine occurrence

- 0 - 10
- 10 - 20
- 20 - 30
- 30 - 40
- 40 - 50
- 50 - 60
- 60 - 70
- 70 - 80
- 80 - 90
- 90 - 100

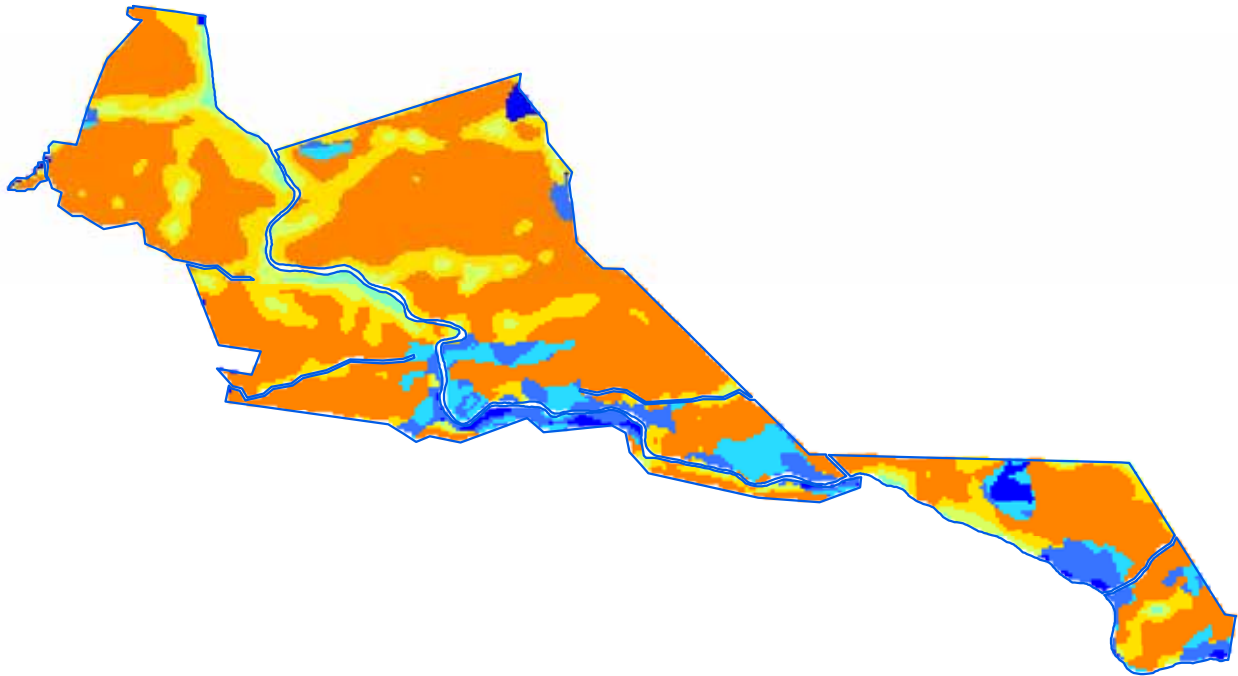
□ Goonoowigal State Conservation Area boundary

Spatial data courtesy of Office of Environment and Heritage.
Spatial analysis by Eco Logical Australia Pty Ltd.



Goonoowigal State Conservation Area

Predicted location - black cypress pine

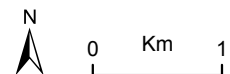


Relative probability (%) of black cypress pine occurrence

- 0 - 10
- 10 - 20
- 20 - 30
- 30 - 40
- 40 - 50
- 50 - 60
- 60 - 70
- 70 - 80

□ Goonoowigal State Conservation Area boundary

Spatial data courtesy of Office of Environment and Heritage.
Spatial analysis by Eco Logical Australia Pty Ltd.

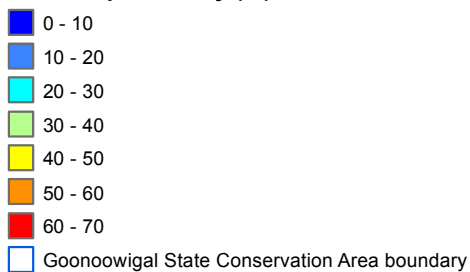


Goonoowigal State Conservation Area

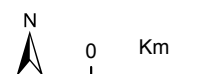
Predicted location - bulloak



Relative probability (%) of bulloak occurrence

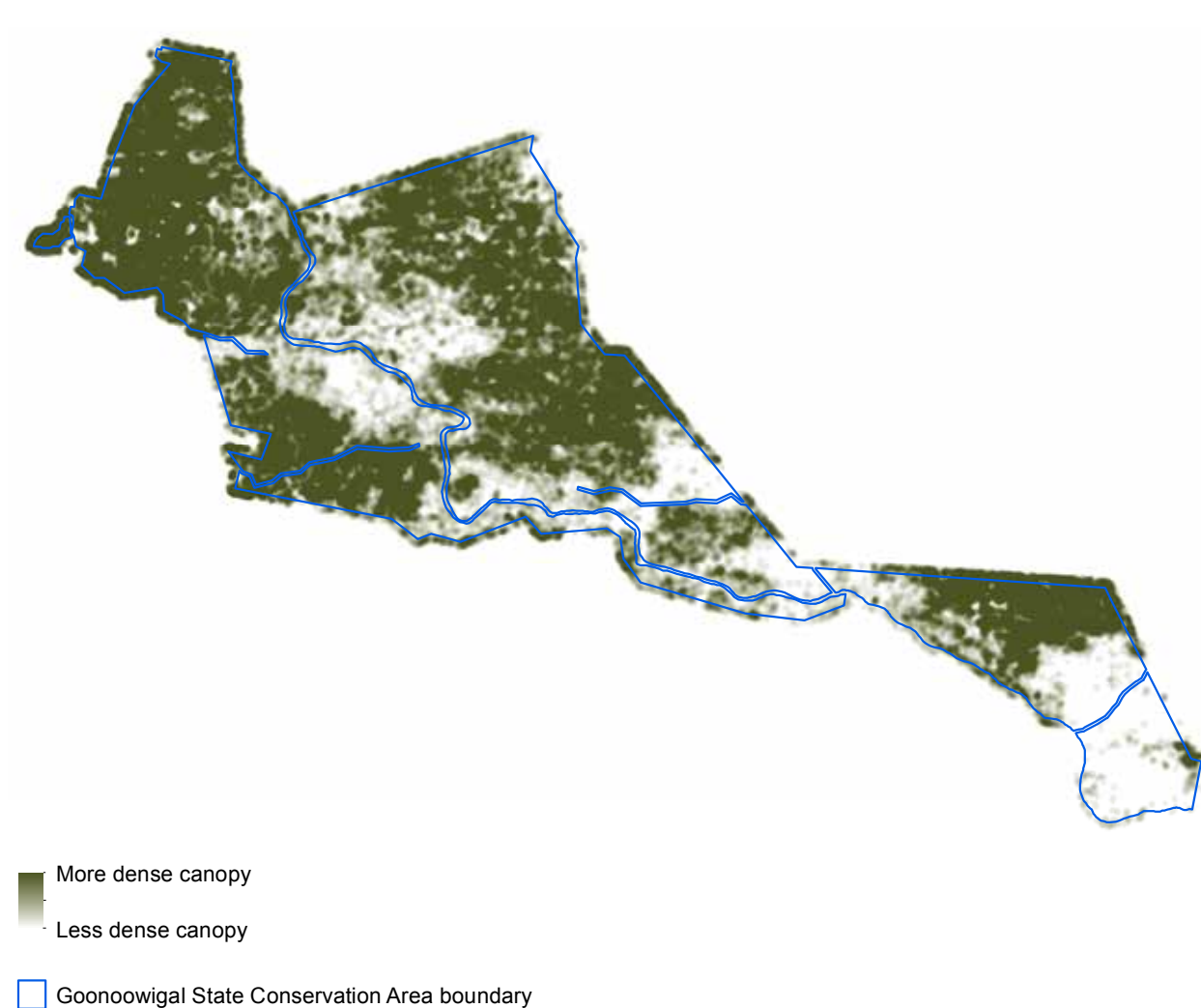


Spatial data courtesy of Office of Environment and Heritage.
Spatial analysis by Eco Logical Australia Pty Ltd.

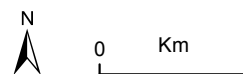


Goonoowigal State Conservation Area

Continuous canopy density surface - cypress pine

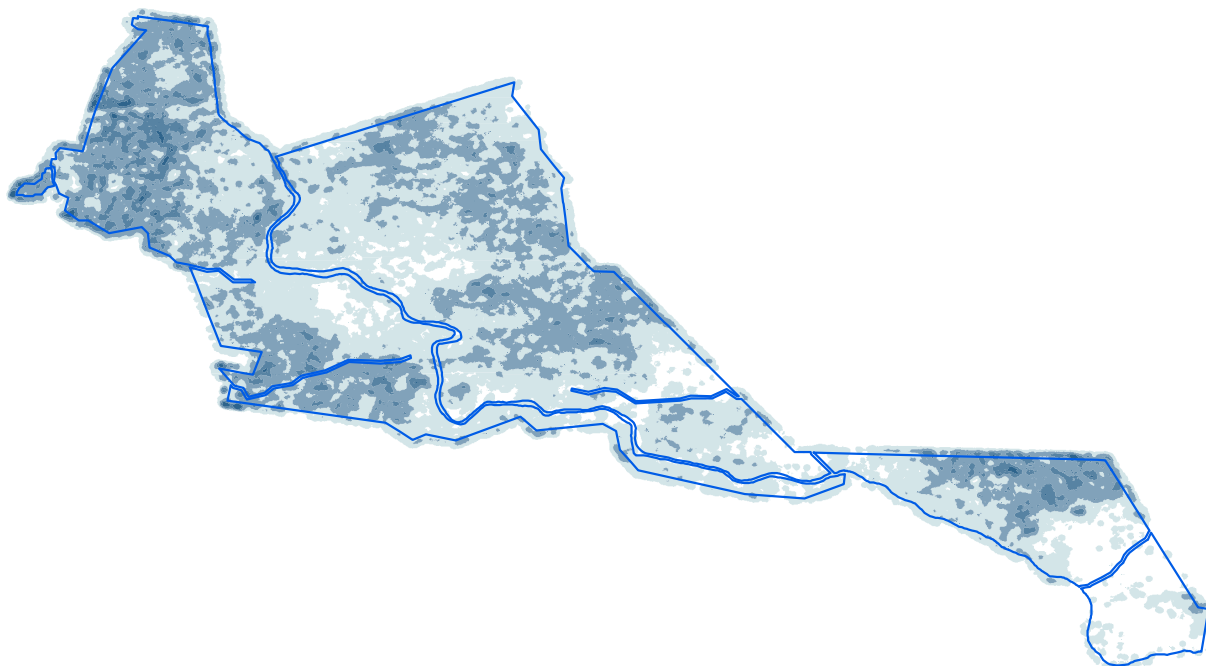


ADS40 Airborne Digital Sensor data.
Spatial data courtesy of Office of Environment and Heritage.
Spatial analysis by Remote Census Pty Ltd (2014).



Goonoowigal State Conservation Area

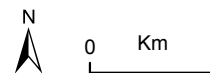
Discrete canopy density classes - cypress pine



Canopy density classes

- Class 0 (little or no cypress pine detected)
- Density slice range 1 to 10
- Density slice range 10 to 20
- Density slice range 20 to 30
- Density slice range 30 to 100
- Goonoowigal State Conservation Area boundary

ADS40 Airborne Digital Sensor data.
Spatial data courtesy of Office of Environment and Heritage.
Spatial analysis by Remote Census Pty Ltd (2014).



Goonoowigal State Conservation Area

Summary statistics - spatial analysis

Area of cypress canopy classes (excludes areas affected by wildfire since 2009)	
Class	Total (hectares)
Class 0 (little or no cypress detected)	130
Class 1 (1-10 percent)	635
Class 2 (11-20 percent)	383
Class 3 (21-30 percent)	61
Class 4 (>31 percent)	3

Issues and confidence levels for ADS40 spatial products		
ADS40 image quality	Issues	Confidence levels
High	Image classification and mapping includes other species	Lower

Goonoowigal State Conservation Area

Summary statistics - general

Lindsay types	Area (hectares)	Proportion of total (%)
Not typed	1,051	-

NSW Vegetation classification and assessment (VCA) type	NSW TSC Act ¹	EPBC Act ²
VCA 504: Black Cypress Pine - Rough-barked Apple - stringybark shrubby open forest of the Nandewar and western New England Tablelands Bioregions	-	-
VCA 509: Blakely's Red Gum - White Cypress Pine - Rough-barked Apple grassy open forest of drainage lines of the northern Nandewar and New England Tablelands Bioregions	yes	yes
VCA 519: Heathy shrubland on granitic substrates in the Howell area in the New England Tablelands Bioregion	yes	-
VCA 538: Rough-barked Apple - Blakely's Red Gum open forest of the Nandewar and western New England Tablelands Bioregions	yes	yes
VCA 544: Rough-barked Apple -/+ cypress pine +/- Blakely's Red Gum riparian open forest / woodland of the Nandewar and New England Tableland Bioregions	yes	yes
VCA 578: Tumbledown Red Gum - Black Cypress Pine - Caley's Ironbark shrubby open forest of the Nandewar and western New England Tablelands Bioregions	-	-

¹ NSW *Threatened Species Conservation Act 1995*

² Australian Government *Environment Protection and Biodiversity Conservation Act 1999*

Native species recorded		Number	
Flora		343	
Fauna		90	
Threatened species			
Scientific name	Common name	NSW TSC Act ¹	EPBC Act ²
Flora			
<i>Eucalyptus mckieana</i>	McKie's stringybark	V	V
<i>Homoranthus prolixus</i>	Granite homoranthus	V	V
<i>Polygala linariifolia</i>	Native milkwort	E1	-
<i>Macrozamia humilis</i>	Inverell cycad	E1	-
Fauna			
<i>Glossopsitta pusilla</i>	Little lorikeet	V	-
<i>Neophema pulchella</i>	Turquoise parrot	V	-
<i>Climacteris picumnus victoriae</i>	Brown treecreeper (eastern subspecies)	V	-
<i>Stagonopleura guttata</i>	Diamond firetail	V	-
<i>Petaurus norfolcensis</i>	Squirrel glider	V	-

Cultural heritage - Aboriginal and non-Aboriginal	Number of sites
AHIMS registered sites	1
Heritage items or places of historic significance	no information available

Goonoowigal State Conservation Area

Summary statistics - general

Current management plans	Status
Plan of management	no
Fire management strategy	June 2008
Regional pest management strategy	Northern tablelands region 2012-17

Fire history	Prescribed burn (hectares)	Wildfire (hectares)
2005-06	-	50

Mining	Number of titles
Exploration	1 petroleum, 1 mineral
Application	none

Apiarist sites
None