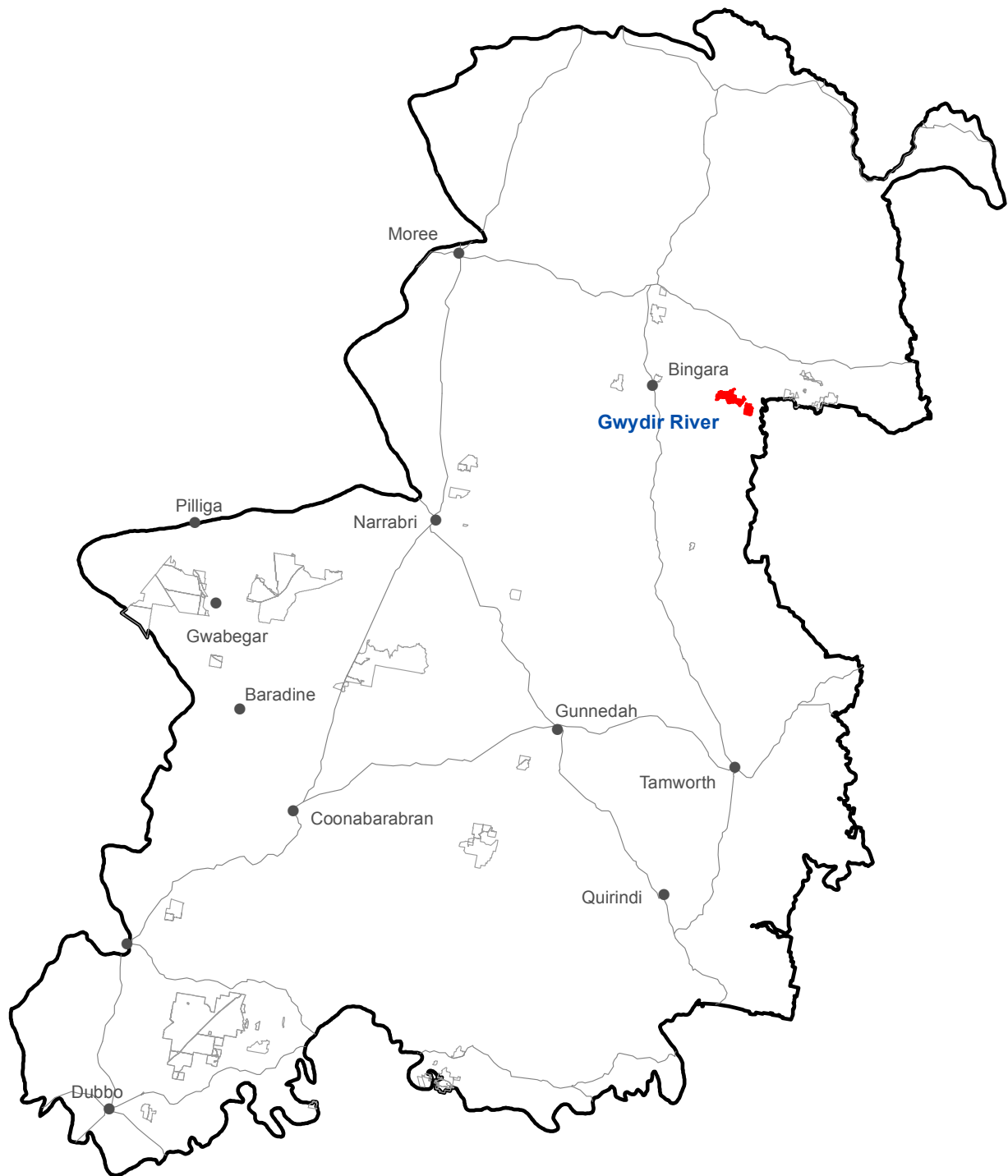


Gwydir River State Conservation Area (2,607 hectares)

Location



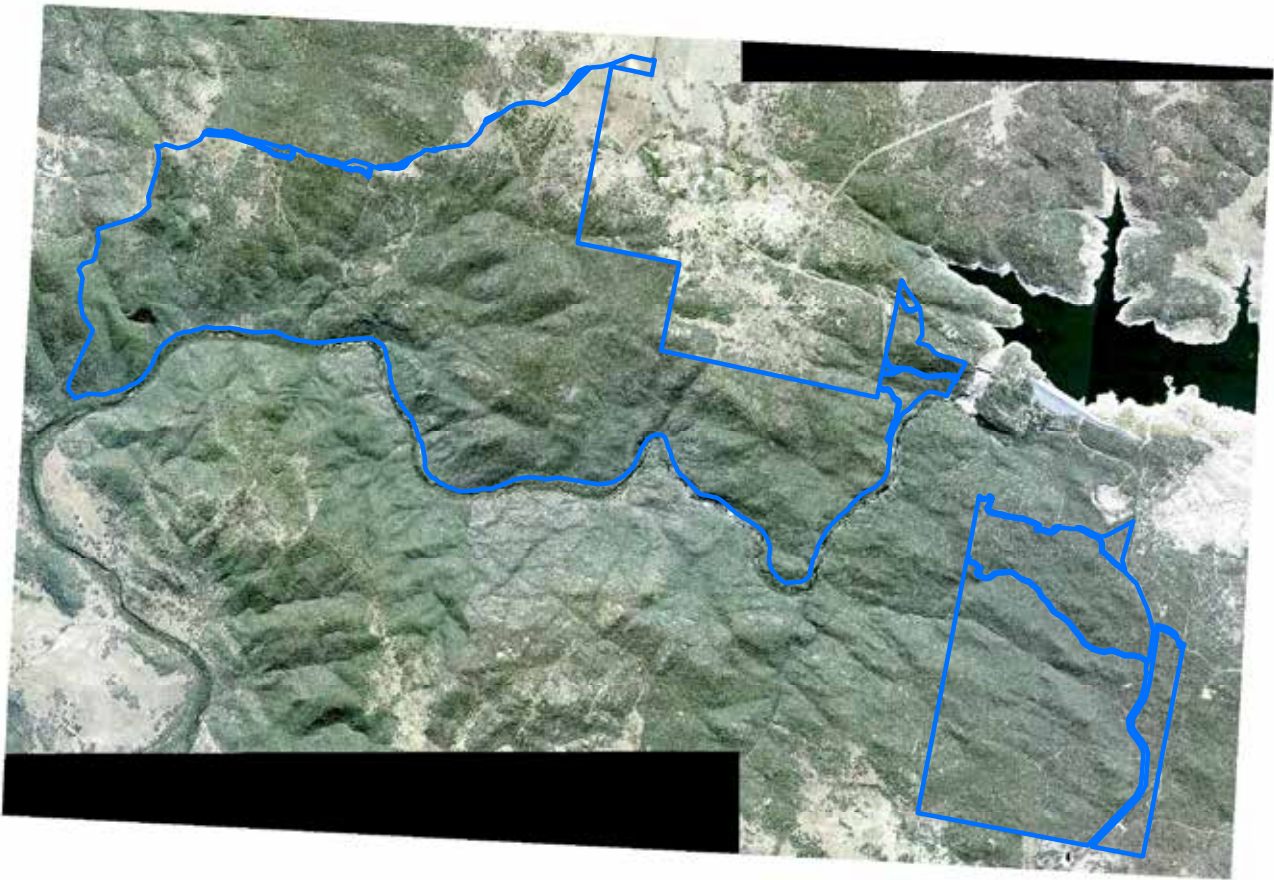
-  Gwydir River State Conservation Area
-  Other Zone 3 State Conservation Areas

Spatial data courtesy of Office of Environment and Heritage.



Gwydir River State Conservation Area

Aerial



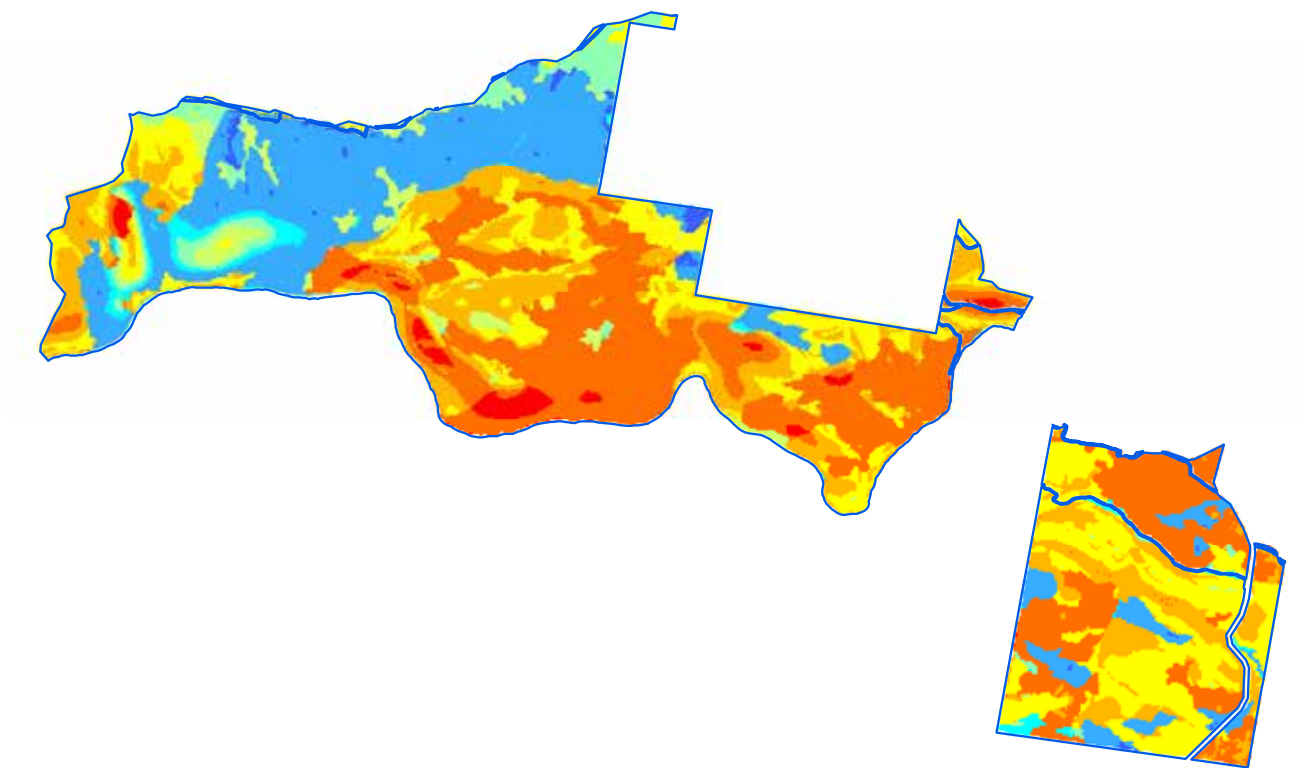
 Gwydir River State Conservation Area boundary

ADS40 Airborne Digital Sensor data.
Spatial data courtesy of Office of Environment and Heritage.
Spatial analysis by Remote Census Pty Ltd (2014).



Gwydir River State Conservation Area

Predicted location - white cypress pine

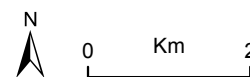


Relative probability (%) of white cypress pine occurrence

- 0 - 10
- 10 - 20
- 20 - 30
- 30 - 40
- 40 - 50
- 50 - 60
- 60 - 70
- 70 - 80
- 80 - 90
- 90 - 100

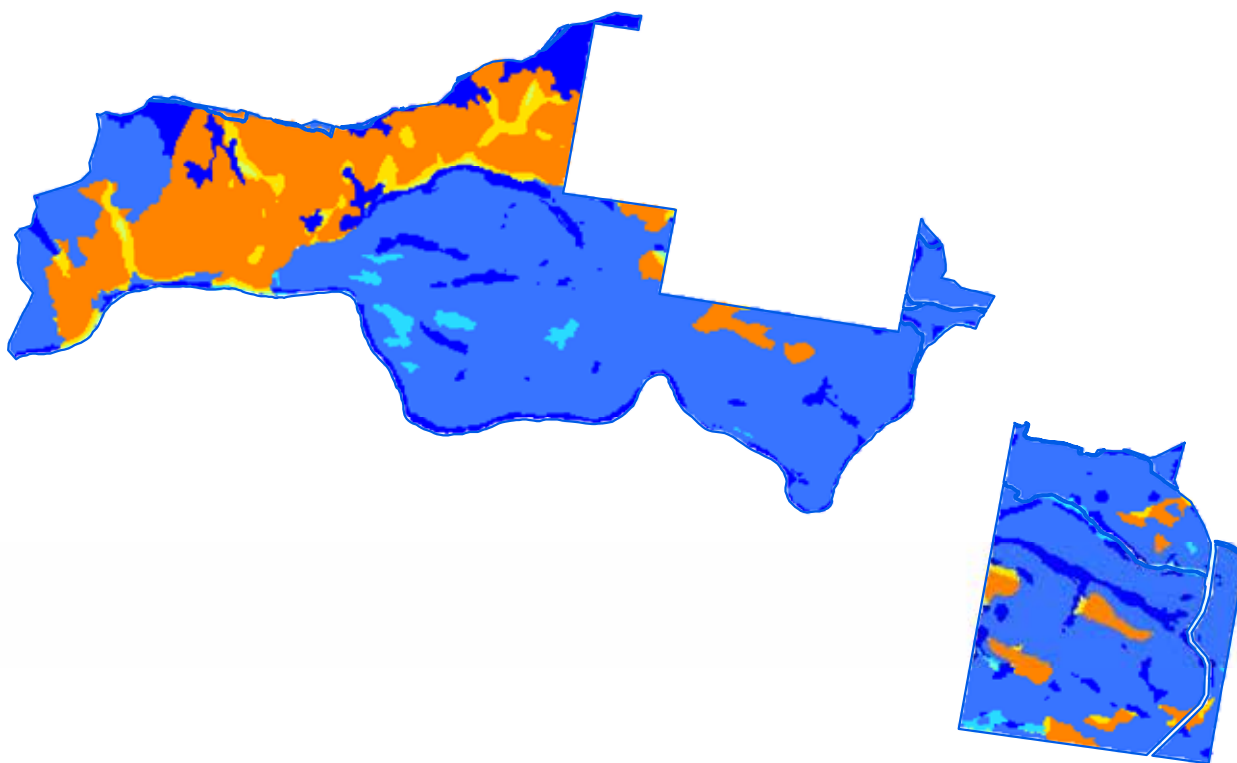
□ Gwydir River State Conservation Area boundary

Spatial data courtesy of Office of Environment and Heritage.
Spatial analysis by Eco Logical Australia Pty Ltd.



Gwydir River State Conservation Area

Predicted location - black cypress pine

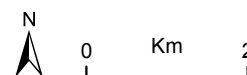


Relative probability (%) of black cypress pine occurrence

- 0 - 10
- 10 - 20
- 20 - 30
- 30 - 40
- 40 - 50
- 50 - 60
- 60 - 70
- 70 - 80

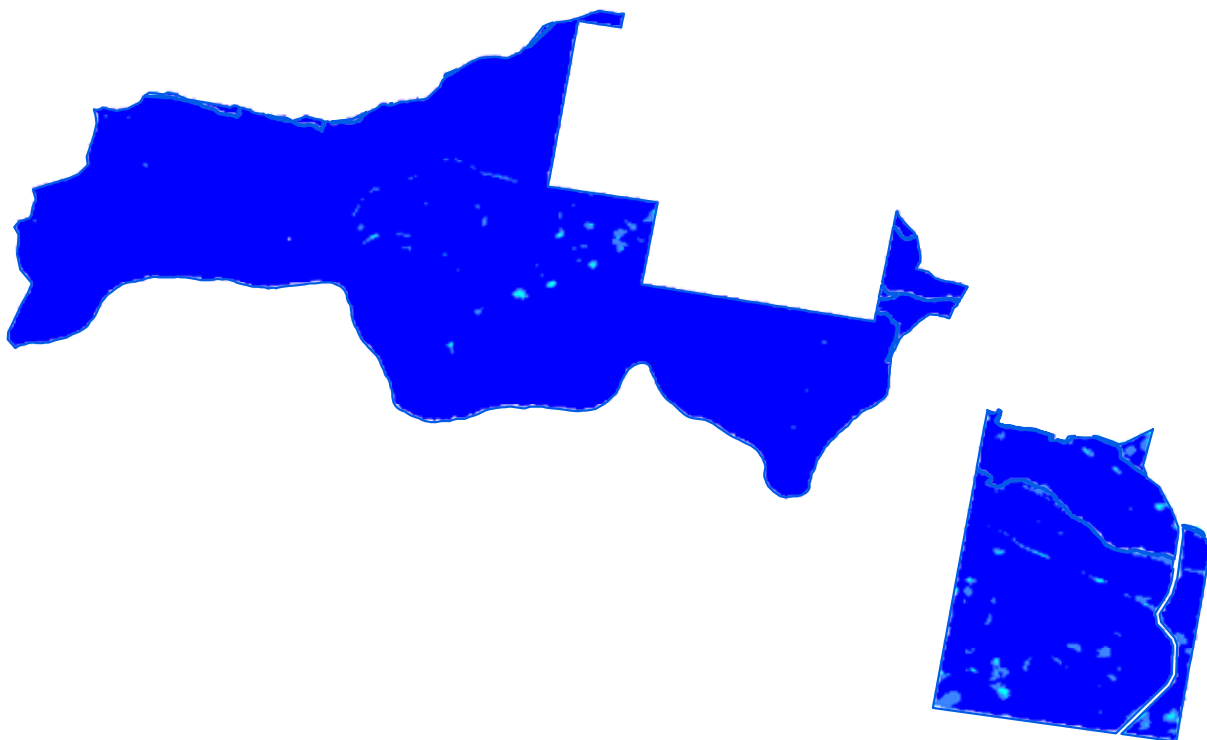
□ Gwydir River State Conservation Area boundary

Spatial data courtesy of Office of Environment and Heritage.
Spatial analysis by Eco Logical Australia Pty Ltd.

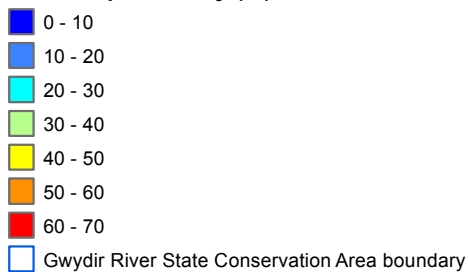


Gwydir River State Conservation Area

Predicted location - bulloak



Relative probability (%) of bulloak occurrence

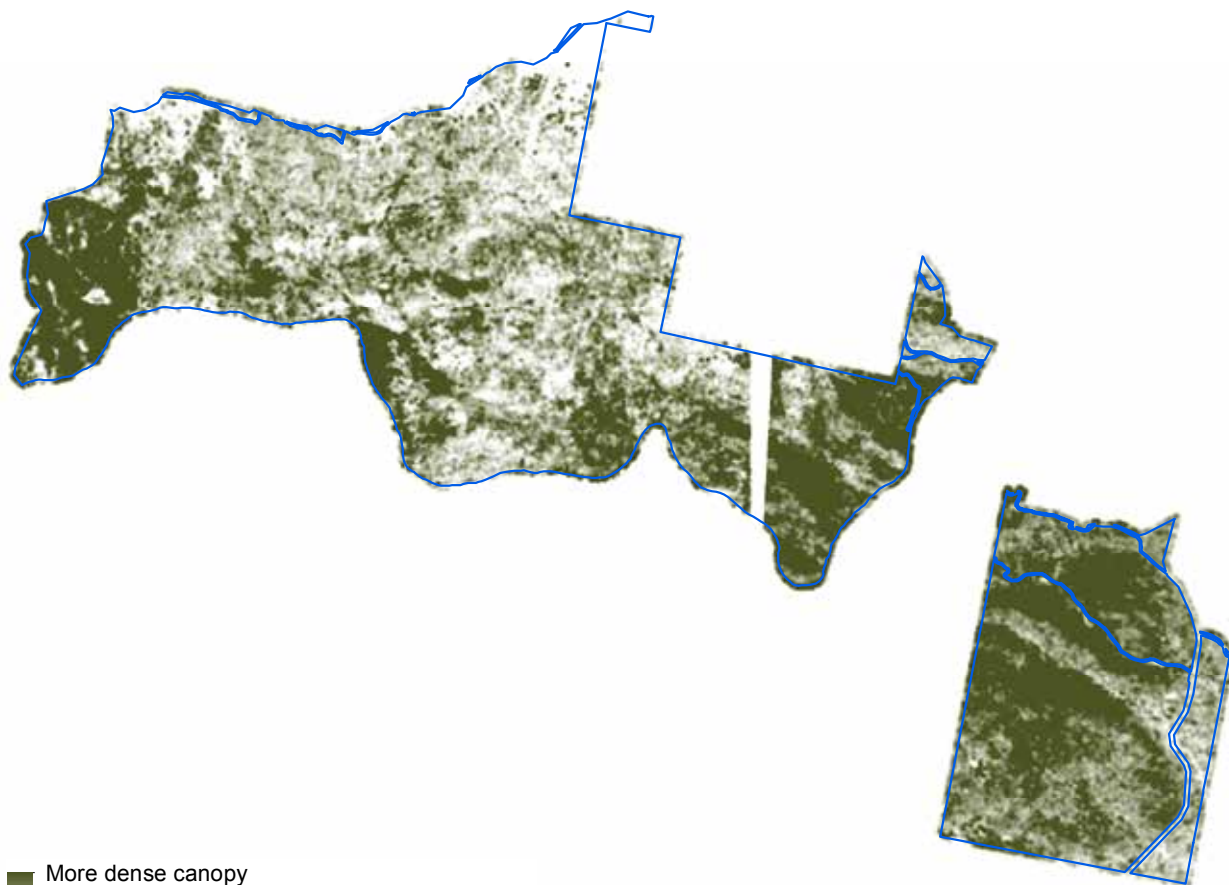


Spatial data courtesy of Office of Environment and Heritage.
Spatial analysis by Eco Logical Australia Pty Ltd.



Gwydir River State Conservation Area

Continuous canopy density surface - cypress pine



More dense canopy
Less dense canopy

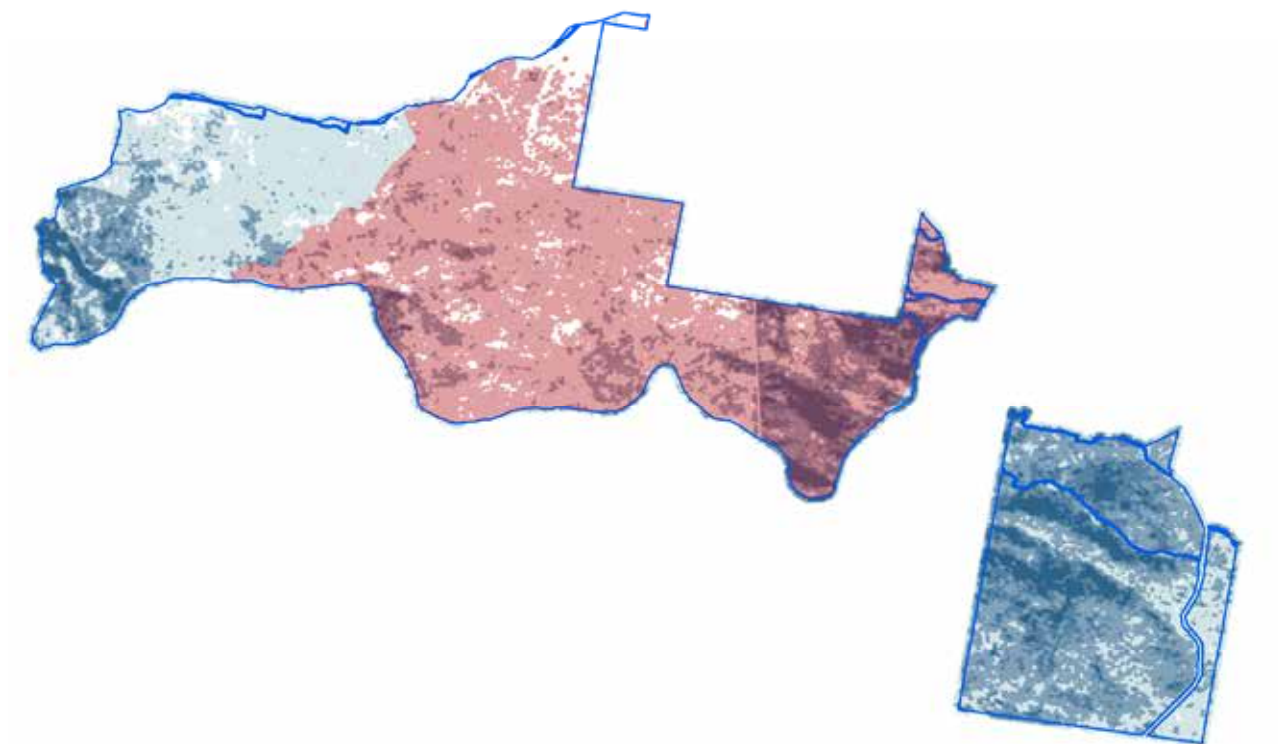
Gwydir River State Conservation Area boundary

ADS40 Airborne Digital Sensor data.
Spatial data courtesy of Office of Environment and Heritage.
Spatial analysis by Remote Census Pty Ltd (2014).



Gwydir River State Conservation Area

Discrete canopy density classes - cypress pine

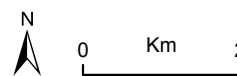


Wildfire since 2004-05

Canopy density classes

- Class 0 (little or no cypress pine detected)
- Density slice range 1 to 10
- Density slice range 10 to 20
- Density slice range 20 to 30
- Density slice range 30 to 100
- Gwydir River State Conservation Area boundary

ADS40 Airborne Digital Sensor data.
Spatial data courtesy of Office of Environment and Heritage.
Spatial analysis by Remote Census Pty Ltd (2014).



Gwydir River State Conservation Area

Summary statistics - spatial analysis

Area of cypress canopy classes (excludes areas affected by wildfire since 2009)	
Class	Total (hectares)
Class 0 (little or no cypress detected)	82
Class 1 (1-10 percent)	827
Class 2 (11-20 percent)	620
Class 3 (21-30 percent)	272
Class 4 (>31 percent)	145

Issues and confidence levels for ADS40 spatial products		
ADS40 image quality	Issues	Confidence levels
Medium	Image classification and mapping includes other species	Lower

Gwydir River State Conservation Area

Summary statistics - general

Lindsay types	Area (hectares)	Proportion of total (%)
Roughbarked Apple (<i>Angophora floribunda</i>)	13	<1
Roughbarked Apple (<i>Angophora floribunda</i>) in association with Blakelys Red Gum (<i>E.blakelyi</i>)	8	<1
Blakely's Red Gum (<i>E.blakelyi</i>)	3	<1
Black Cypress Pine	20	1
Black Cypress Pine (<i>Callitris endlicheri</i>) in association with Youmans' Stringybark (<i>E.youmannii</i>)	4	<1
Black Cypress Pine (<i>Callitris endlicheri</i>) - Caley's Ironbark (<i>E. caleyi</i>)	7	<1
Black Cypress Pine (<i>Callitris endlicheri</i>) - Caley's Ironbark (<i>E. caleyi</i>) in association with White Cypress Pine (<i>Callitris glaucophylla</i>)	11	<1
Black Cypress Pine (<i>Callitris endlicheri</i>) - Caley's Ironbark (<i>E. caleyi</i>), on rocky terrain	33	1
Black Cypress Pine (<i>Callitris endlicheri</i>) - Silverleaved Ironbark (<i>E. melanophloia</i>), on rocky terrain	12	<1
Black Cypress Pine - White Cypress Pine	13	<1
White Cypress Pine	734	21
White Cypress Pine (<i>Callitris glaucophylla</i>) in association with Roughbarked Apple (<i>Angophora floribunda</i>)	6	<1
White Cypress Pine (<i>Callitris glaucophylla</i>) alternating with areas of rock	4	<1
White Cypress Pine (<i>Callitris glaucophylla</i>) on rocky terrain	21	1
White Cypress Pine (<i>Callitris glaucophylla</i>) - Caley's Ironbark (<i>E. caleyi</i>)	500	15
White Cypress Pine (<i>Callitris glaucophylla</i>) - Caley's Ironbark (<i>E. caleyi</i>) in association with (<i>Angophora floribunda</i>)	4	<1
White Cypress Pine (<i>Callitris glaucophylla</i>) - Caley's Ironbark (<i>E. caleyi</i>) in association with Black Cypress Pine (<i>Callitris endlicheri</i>)	81	2
White Cypress Pine (<i>Callitris glaucophylla</i>) - Caley's Ironbark (<i>E. caleyi</i>) alternating with rock	94	3
White Cypress Pine (<i>Callitris glaucophylla</i>) - Caley's Ironbark (<i>E. caleyi</i>) on rocky terrain	136	4
White Cypress Pine (<i>Callitris glaucophylla</i>) - Silverleaved Ironbark (<i>E. melanophloia</i>)	307	9
White Cypress Pine (<i>Callitris glaucophylla</i>) - Silverleaved Ironbark (<i>E. melanophloia</i>), alternating with rock	1	<1
White Cypress Pine (<i>Callitris glaucophylla</i>) - Silverleaved Ironbark (<i>E. melanophloia</i>), on rocky terrain	36	1
White Cypress Pine (<i>Callitris glaucophylla</i>) - White Box (<i>E. albens</i>)	31	1
White Cypress Pine (<i>Callitris glaucophylla</i>) - Yellow Box (<i>E.meliodora</i>)	9	<1
White Cypress Pine - Black Cypress Pine	178	5
White Cypress Pine (<i>Callitris glaucophylla</i>) - Black Cypress Pine (<i>Callitris endlicheri</i>) in association with Silverleaved Ironbark (<i>E. melanophloia</i>)	17	1
White Cypress Pine (<i>Callitris glaucophylla</i>) - Bancrofts Red Gum (<i>E. bancroftii</i>)	4	<1
White Cypress Pine (<i>Callitris glaucophylla</i>) - Tumbledown Red Gum (<i>E. dealbata</i>)	4	<1

Gwydir River State Conservation Area

Summary statistics - general

Lindsay types	Area (hectares)	Proportion of total (%)
River Red Gum (<i>E. camaldulensis</i>) in association with River Oak (<i>Casuarina cunninghamiana</i>)	2	<1
Caley's Ironbark (<i>E. caleyi</i>) - Tumbledown Red Gum (<i>E. dealbata</i>)	9	<1
Caley's Ironbark (<i>E. caleyi</i>) - Tumbledown Red Gum (<i>E. dealbata</i>) on rocky terrain	28	1
River Oak (<i>Casuarina cunninghamiana</i>) in association with River Red Gum (<i>E. camaldulensis</i>)	1	<1
Wattle (<i>Acacia sp.</i>) on rocky terrain	2	<1
Settlements, Roads, Gravel Pits, etc.	3	<1
Heath / Rock	1	<1
Heath, on rocky terrain	1	<1
Rock	40	1
Untyped	1,040	30

NSW Vegetation classification and assessment (VCA) type	NSW TSC Act ¹	EPBC Act ²
VCA 509: Blakely's Red Gum - White Cypress Pine - Rough-barked Apple grassy open forest of drainage lines of the northern Nandewar and New England Tablelands Bioregions	yes	yes
VCA 519: Healthy shrubland on granitic substrates in the Howell area in the New England Tablelands Bioregion	yes	-
VCA 582: Sedgeland fens wetland of impeded drainage of the Nandewar and New England Tablelands Bioregions	nominated	-
VCA 594: Silver-leaved Ironbark - White Cypress Pine shrubby open forest of Brigalow Belt South and Nandewar Bioregions	-	-
VCA 542: Stringybark - Rough-barked Apple - cypress pine shrubby open forest of the eastern Nandewar and western New England Tablelands Bioregions	-	-
VCA 562: Tumbledown Red Gum - White Cypress Pine - Caley's Ironbark shrubby open forest of the Nandewar and western New England Tablelands Bioregions	-	-
VCA 564: White Cypress Pine - Silver-leaved Ironbark - Caley's Ironbark open forest of the central Nandewar and western New England Tablelands Bioregions	-	-
VCA 547: Wild Quince - Mock Olive - Rusty Fig - Iamboto - Sweet Pittosporum dry rainforest of rocky and scree areas of the Nandewar and New England Tablelands Bioregions	yes	yes

¹ NSW *Threatened Species Conservation Act 1995*

² Australian Government *Environment Protection and Biodiversity Conservation Act 1999*

Native species recorded	Number
Flora	448
Fauna	21

Gwydir River State Conservation Area

Summary statistics - general

Threatened species			
Scientific name	Common name	NSW TSC Act ¹	EPBC Act ²
Flora			
<i>Polygala linariifolia</i>	Native milkwort	E1	-
Fauna			
<i>Neophema pulchella</i>	Turquoise parrot	V	-
<i>Tyto novaehollandiae</i>	Masked owl	V	-
<i>Climacteris picumnus victoriae</i>	Brown treecreeper (eastern subspecies)	V	-
<i>Chthonicola sagittata</i>	Speckled warbler	V	-
<i>Stagonopleura guttata</i>	Diamond firetail	V	-

Cultural heritage - Aboriginal and non-Aboriginal	Number of sites
AHIMS registered sites	5
Heritage items or places of historic significance	no information available

Current management plans	Status
Plan of management	no
Fire management strategy	August 2006
Regional pest management strategy	Northern tablelands region 2012-17

Fire history	Prescribed burn (hectares)	Wildfire (hectares)
2009-10	-	1,780
2012-13	97	2
2013-14	101	-

Mining	Number of titles
Exploration	1 mineral
Application	none

Apiarist sites
14