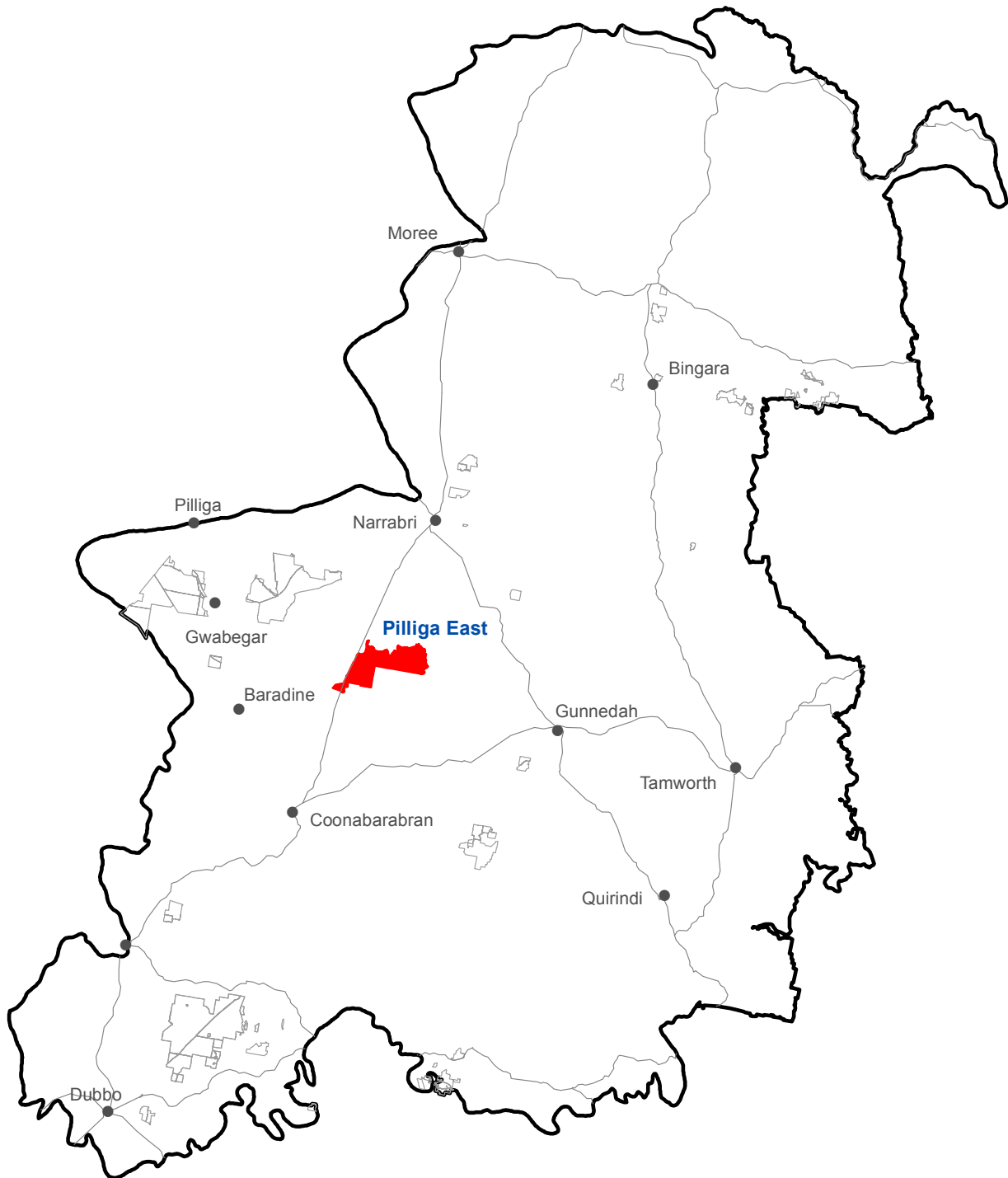


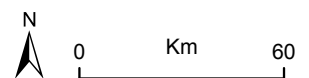
Pilliga East State Conservation Area (24,669 hectares)

Location



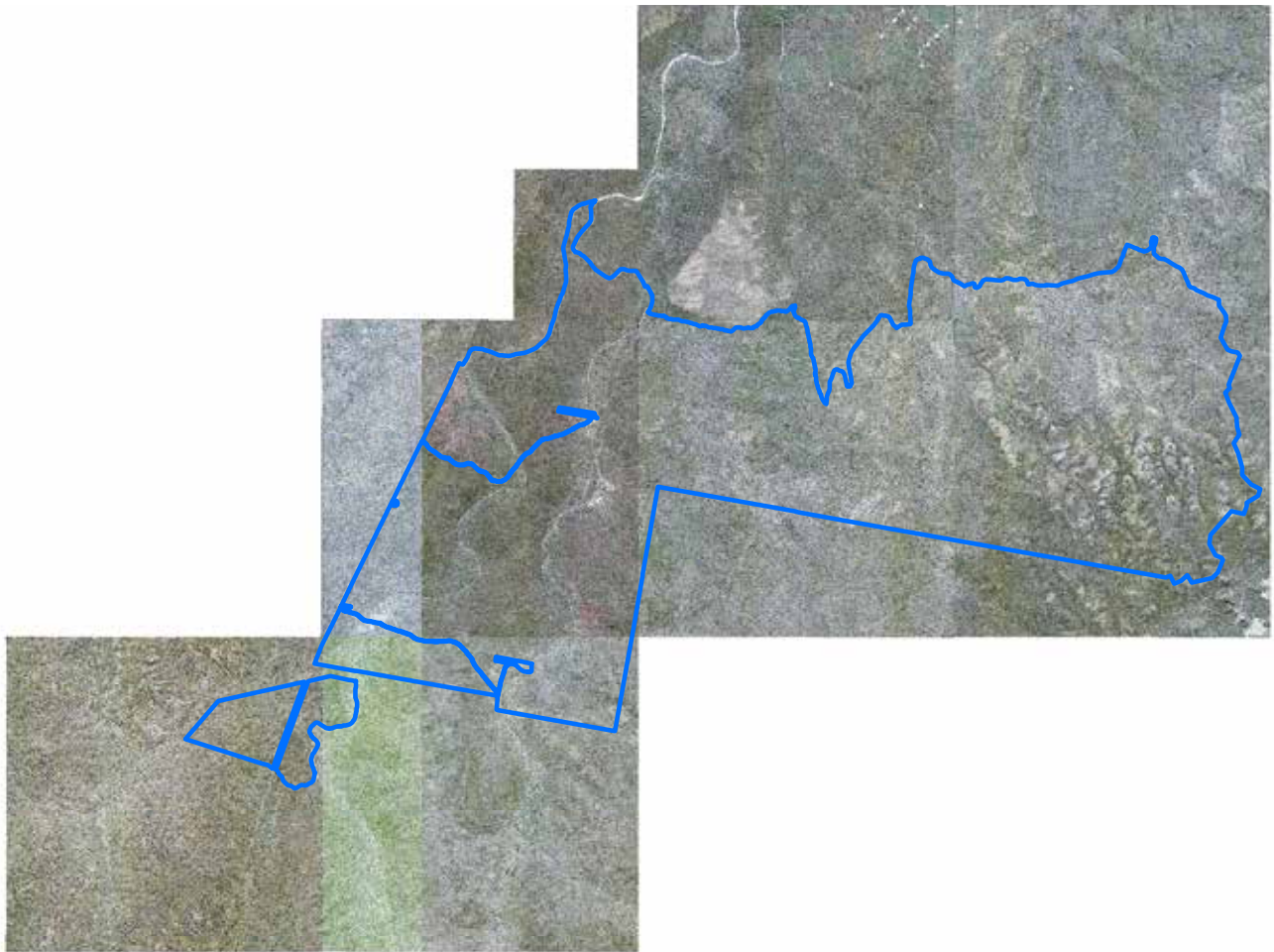
- Pilliga East State Conservation Area
- Other Zone 3 State Conservation Areas


Spatial data courtesy of Office of Environment and Heritage.



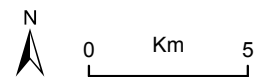
Pilliga East State Conservation Area

Aerial



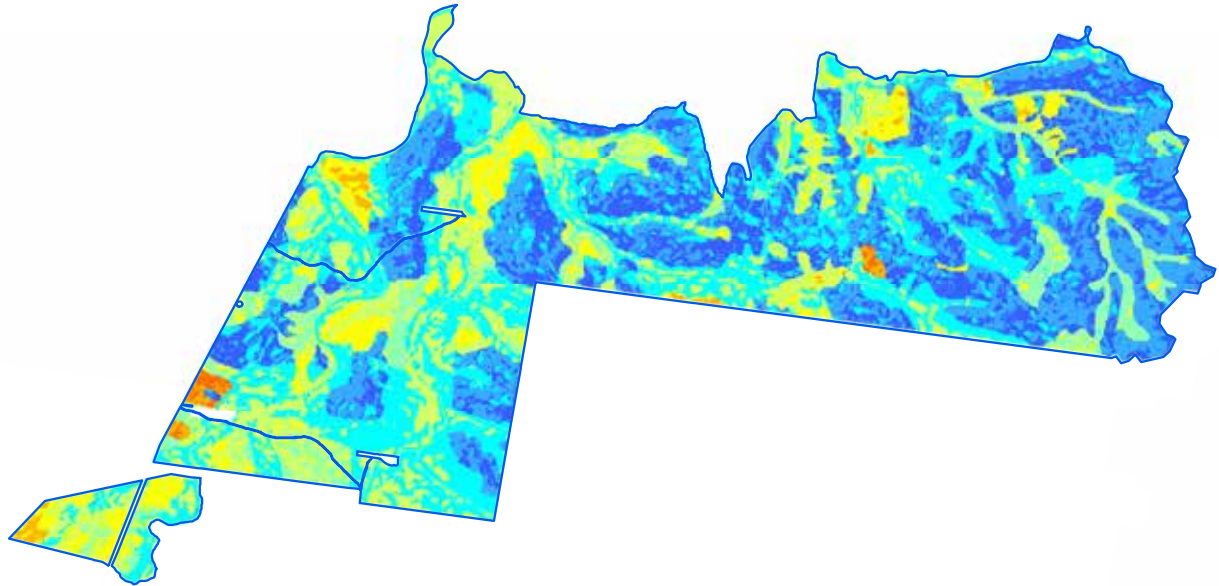
 Pilliga East State Conservation Area boundary

ADS40 Airborne Digital Sensor data.
Spatial data courtesy of Office of Environment and Heritage.
Spatial analysis by Remote Census Pty Ltd (2014).



Pilliga East State Conservation Area

Predicted location - white cypress pine

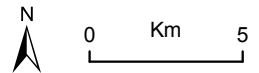


Relative probability (%) of white cypress pine occurrence

- 0 - 10
- 10 - 20
- 20 - 30
- 30 - 40
- 40 - 50
- 50 - 60
- 60 - 70
- 70 - 80
- 80 - 90
- 90 - 100

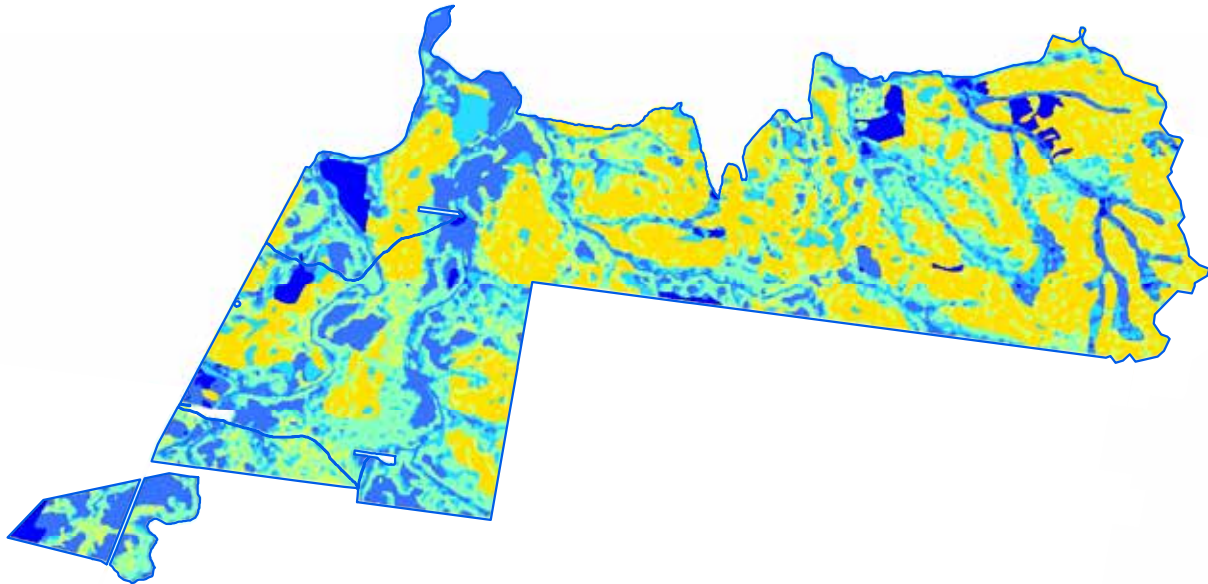
□ Pilliga East State Conservation Area boundary

Spatial data courtesy of Office of Environment and Heritage.
Spatial analysis by Eco Logical Australia Pty Ltd.



Pilliga East State Conservation Area

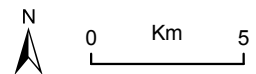
Predicted location - black cypress pine



Relative probability (%) of black cypress pine occurrence

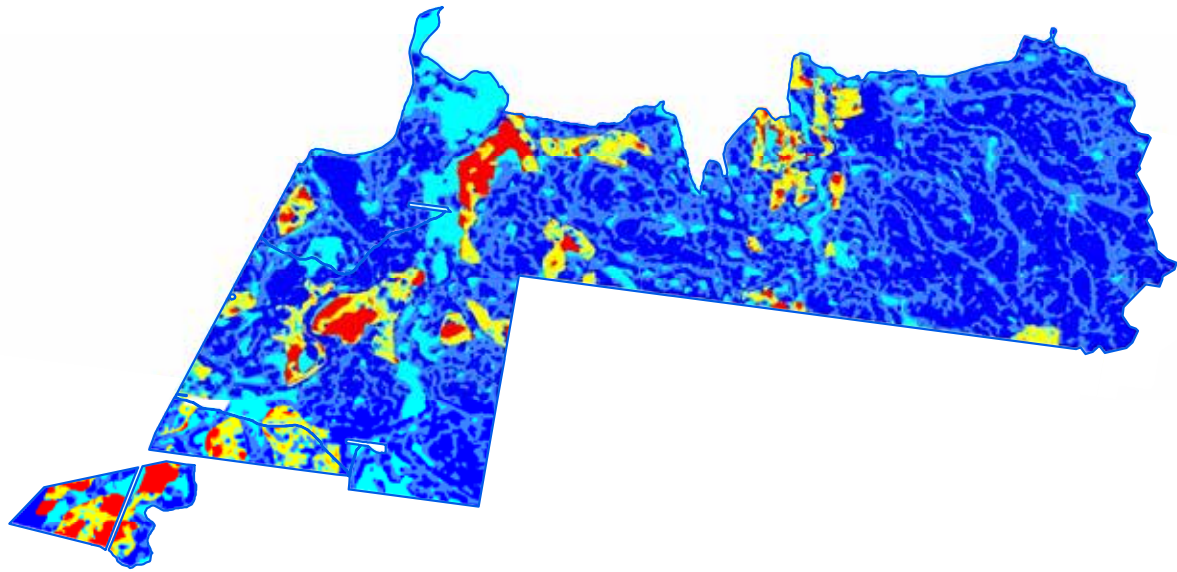
- 0 - 10
- 10 - 20
- 20 - 30
- 30 - 40
- 40 - 50
- 50 - 60
- 60 - 70
- 70 - 80
- Pilliga East State Conservation Area boundary

Spatial data courtesy of Office of Environment and Heritage.
Spatial analysis by Eco Logical Australia Pty Ltd.



Pilliga East State Conservation Area

Predicted location - bulloak

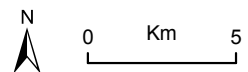


Relative probability (%) of bulloak occurrence

- 0 - 10
- 10 - 20
- 20 - 30
- 30 - 40
- 40 - 50
- 50 - 60
- 60 - 70

□ Pilliga East State Conservation Area boundary


Spatial data courtesy of Office of Environment and Heritage.
Spatial analysis by Eco Logical Australia Pty Ltd.




Pilliga East State Conservation Area

Continuous canopy density surface - cypress pine



 More dense canopy
Less dense canopy

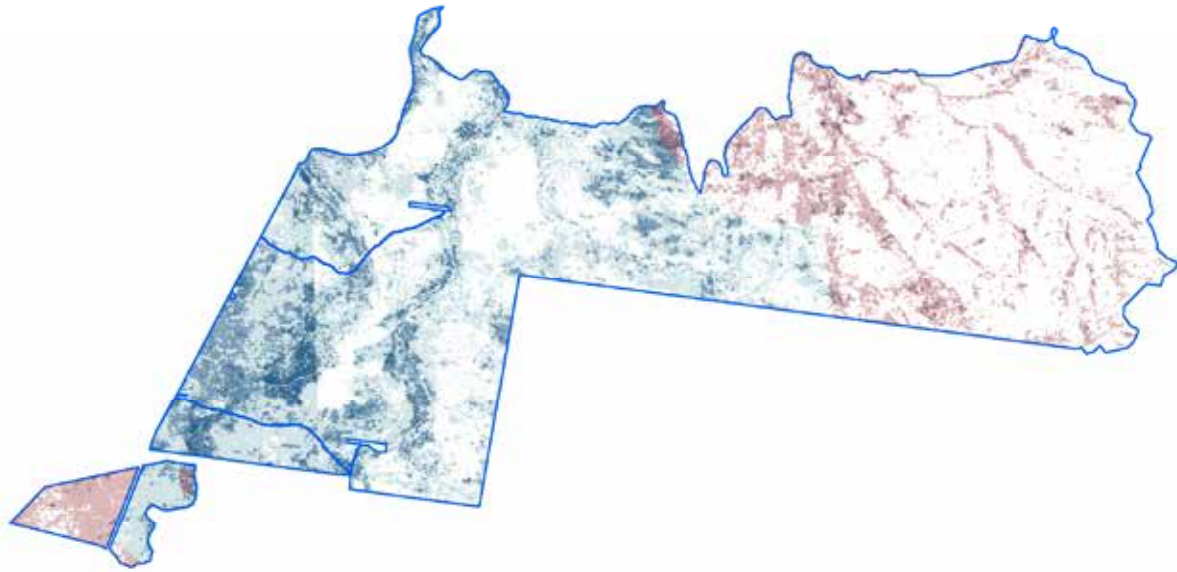
 Pilliga East State Conservation Area boundary

ADS40 Airborne Digital Sensor data.
Spatial data courtesy of Office of Environment and Heritage.
Spatial analysis by Remote Census Pty Ltd (2014).



Pilliga East State Conservation Area

Discrete canopy density classes - cypress pine

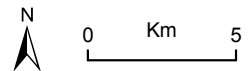


Wildfire since 2004-05

Canopy density classes

- Class 0 (little or no cypress pine detected)
- Density slice range 1 to 10
- Density slice range 10 to 20
- Density slice range 20 to 30
- Density slice range 30 to 100
- Pilliga East State Conservation Area boundary

ADS40 Airborne Digital Sensor data.
Spatial data courtesy of Office of Environment and Heritage.
Spatial analysis by Remote Census Pty Ltd (2014).



Pilliga East State Conservation Area

Summary statistics - spatial analysis

Area of cypress canopy classes (excludes areas affected by wildfire since 2009)	
Class	Total (hectares)
Class 0 (little or no cypress detected)	5,012
Class 1 (1-10 percent)	6,546
Class 2 (11-20 percent)	2,423
Class 3 (21-30 percent)	666
Class 4 (>31 percent)	203

Issues and confidence levels for ADS40 spatial products		
ADS40 image quality	Issues	Confidence levels
Low-high	Image classification and mapping includes other species and fire regrowth	Lower

Pilliga East State Conservation Area

Summary statistics - general

Lindsay types	Area (hectares)	Proportion of total (%)
Roughbark Apple - Red Gum (<i>blakeyi</i>)	17	<1
Red Gum (<i>E. blakelyi</i>) (Blakely's Red Gum) (Lindsay Types)	1,019	4
Red Gum - Roughbark Apple	2,235	9
Red Gum (<i>blakeyi</i>) - Roughbark Apple - Narrowleaf Ironbark	171	1
Red Gum - Roughbark Apple - Smoothbark Apple	136	1
Red Gum - Roughbark Apple - White Cypress Pine (Lindsay Types)	5,907	24
Red Gum - Narrowleaf Ironbark	305	1
Red Gum - Narrowleaf Ironbark - White Cypress Pine (Lindsay Types)	381	2
Red Gum - Broadleaf Ironbark	599	2
Red Gum - Broadleaf Ironbark - White Cypress Pine	391	2
Red Gum - Broadleaf Ironbark - Bloodwood	107	<1
Black Pine - Broadleaf Ironbark (Lindsay Types)	56	<1
Red Gum - Roughbark Apple	36	<1
Narrowleaf Ironbark (Lindsay Types)	12	<1
Narrowleaf Ironbark - Forest Oak - White Cypress Pine (Lindsay Types)	2,444	10
Narrowleaf Ironbark - Cypress Pine	169	1
Narrowleaf Ironbark - Bloodwood - Cypress Pine	111	<1
Broadleaf Ironbark (Lindsay Types)	144	1
Broadleaf Ironbark - Red Gum (<i>blakeyi</i>)	11	<1
Broadleaf Ironbark - White Cypress Pine (Lindsay Types)	415	2
Broadleaf Ironbark - Bloodwood (Lindsay Types)	8,340	34
Broadleaf Ironbark - Bloodwood - Black Pine (Lindsay Types)	706	3
Broadleaf Ironbark - Bloodwood - White Cypress Pine (Lindsay Types)	256	1
No evidence of clearing by man (Lindsay Types)	63	<1
White Cypress Pine - Red Gum	29	<1
White Cypress Pine - Red Gum - Roughbark Apple (Lindsay Types)	212	1
White Cypress Pine - Narrowleaf Ironbark	12	<1
White Cypress Pine - Narrowleaf Ironbark - Forest Oak (Lindsay Types)	119	<1
White Cypress Pine - Broadleaf Ironbark (Lindsay Types)	18	<1
Bloodwood (Lindsay Types)	5	<1
Bloodwood - Broom (<i>Melaleuca uncinata</i>)	81	<1
Untyped	41	<1

Pilliga East State Conservation Area

Summary statistics - general

NSW Vegetation classification and assessment (VCA) type	NSW TSC Act ¹	EPBC Act ²
VCA 423: Blue-leaved Ironbark - Black Cypress Pine - Rough-barked Apple woodland mainly in the east Pilliga forests, Brigalow Belt South bioregion	-	-
VCA 141: Broombush - wattle very tall shrubland of the Pilliga to Goonoo regions, Brigalow Belt South Bioregion	-	-
VCA 409: Dirty (Baradine) Gum - White Bloodwood - White Cypress Pine - Motherumbah shrubby woodland on sandy soils in the Pilliga Scrub and surrounding region, Brigalow Belt South Bioregion	-	-
VCA 408: Dirty Gum (Baradine Gum) - Black Cypress Pine - White Bloodwood shrubby woodland on of the Pilliga forests and surrounding region	-	-
VCA 424: Dwyers Red Gum heathy low open woodland on sandstone ridges in the Pilliga Scrub, Brigalow Belt South Bioregion	-	-
VCA 379: Inland Scribbly Gum - White Bloodwood - Red Stringybark - Black Cypress Pine shrubby sandstone woodland mainly of the Warrumbungle NP - Pilliga region in the Brigalow Belt South Bioregion	-	-
VCA 398: Narrow-leaved Ironbark - White Cypress Pine - Buloke tall open forest on lower slopes and flats in the Pilliga Scrub and surrounding forests in the central north Brigalow Belt South Bioregion	-	-
VCA 399: Red gum - Rough-barked Apple +/- tea tree sandy creek woodland (wetland) in the Pilliga - Goonoo sandstone forests, Brigalow Belt South Bioregion	-	-
VCA 401: Rough-barked Apple - red gum - cypress pine woodland on sandy flats, mainly in the Pilliga Scrub region	-	-
VCA 422: Smooth-barked Apple - cypress pine - Narrow-leaved Ironbark - White Bloodwood tall heathy woodland of the Pilliga forests to Warialda region, Brigalow Belt South Bioregion	-	-
VCA 407: White Bloodwood - ironbark - Black Cypress Pine shrubby sandstone hill woodland of the southern Pilliga forests	-	-
VCA 406: White Bloodwood - Motherumbah - Red Ironbark shrubby sandstone hill woodland / open forest mainly in east Pilliga forests	-	-
VCA 405: White Bloodwood - Red Ironbark - cypress pine shrubby sandstone woodland of the Pilliga Scrub and surrounding regions	-	-
VCA 421: Yellow Box - White Cypress Pine alluvial terrace flats grassy woodland in the Pilliga forests to Warialda region, Brigalow Belt South Bioregion	yes	yes

¹ NSW *Threatened Species Conservation Act 1995*

² Australian Government *Environment Protection and Biodiversity Conservation Act 1999*

Native species recorded		Number	
Flora		415	
Fauna		141	
Threatened species			
Scientific name	Common name	NSW TSC Act ¹	EPBC Act ²
Flora			
<i>Rulingia procumbens</i>		V	V
<i>Philotheca ericifolia</i>		-	V

Pilliga East State Conservation Area

Summary statistics - general

Threatened species			
Scientific name	Common name	NSW TSC Act ¹	EPBC Act ²
Fauna			
<i>Lophoictinia isura</i>	Square-tailed kite	V	-
<i>Calyptorhynchus lathamii</i>	Glossy black-cockatoo	V	-
<i>Glossopsitta pusilla</i>	Little lorikeet	V	-
<i>Neophema pulchella</i>	Turquoise parrot	V	-
<i>Climacteris picumnus victoriae</i>	Brown treecreeper (eastern subspecies)	V	-
<i>Chthonicola sagittata</i>	Speckled warbler	V	-
<i>Pomatostomus temporalis temporalis</i>	Grey-crowned babbler (eastern subspecies)	V	-
<i>Melanodryas cucullata cucullata</i>	Hooded robin (south-eastern form)	V	-
<i>Stagonopleura guttata</i>	Diamond firetail	V	-
<i>Phascolarctos cinereus</i>	Koala	V	V
<i>Petaurus norfolcensis</i>	Squirrel glider	V	-
<i>Pseudomys pilligaensis</i>	Pilliga mouse	V	V

Cultural heritage - Aboriginal and non-Aboriginal	Number of sites
AHIMS registered sites	12
Heritage items or places of historic significance	4

Current management plans	Status
Plan of management	no
Fire management strategy	May 2012
Regional pest management strategy	Northern plains region 2012-17

Fire history	Prescribed burn (hectares)	Wildfire (hectares)
2005-06	1,866	-
2006-07	-	10,206
2007-08	9	-
2008-09	1,993	-
2009-10	1,656	-
2010-11	3	-
2012-13	2	148

Mining	Number of titles
Exploration	1 coal, 1 petroleum
Application	none

Apiarist sites
58