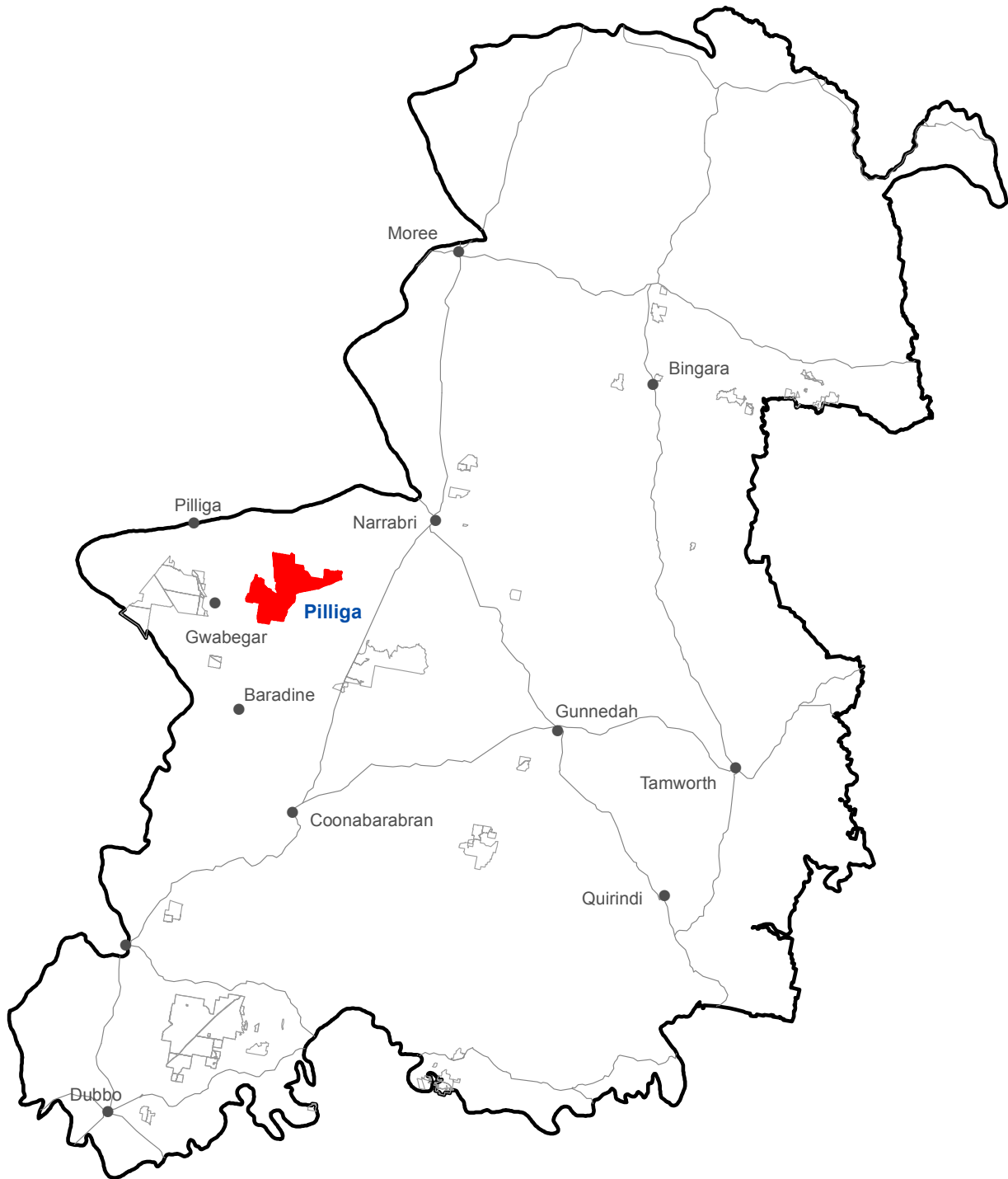




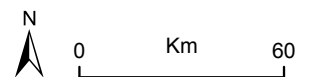
# Pilliga State Conservation Area (33,386 hectares)

## Location



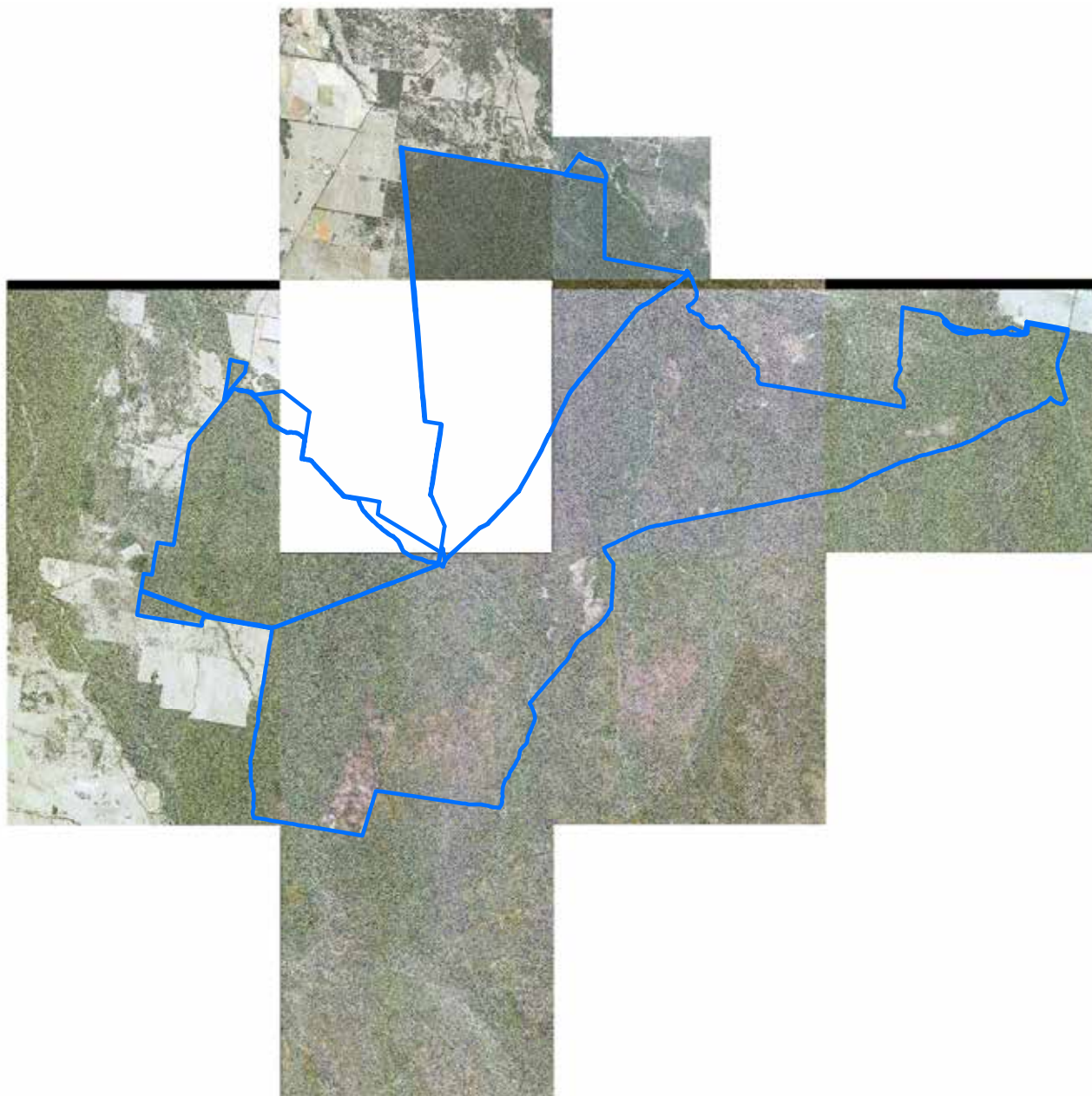
-  Pilliga State Conservation Area
-  Other Zone 3 State Conservation Areas


Spatial data courtesy of Office of Environment and Heritage.



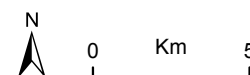
# Pilliga State Conservation Area

Aerial



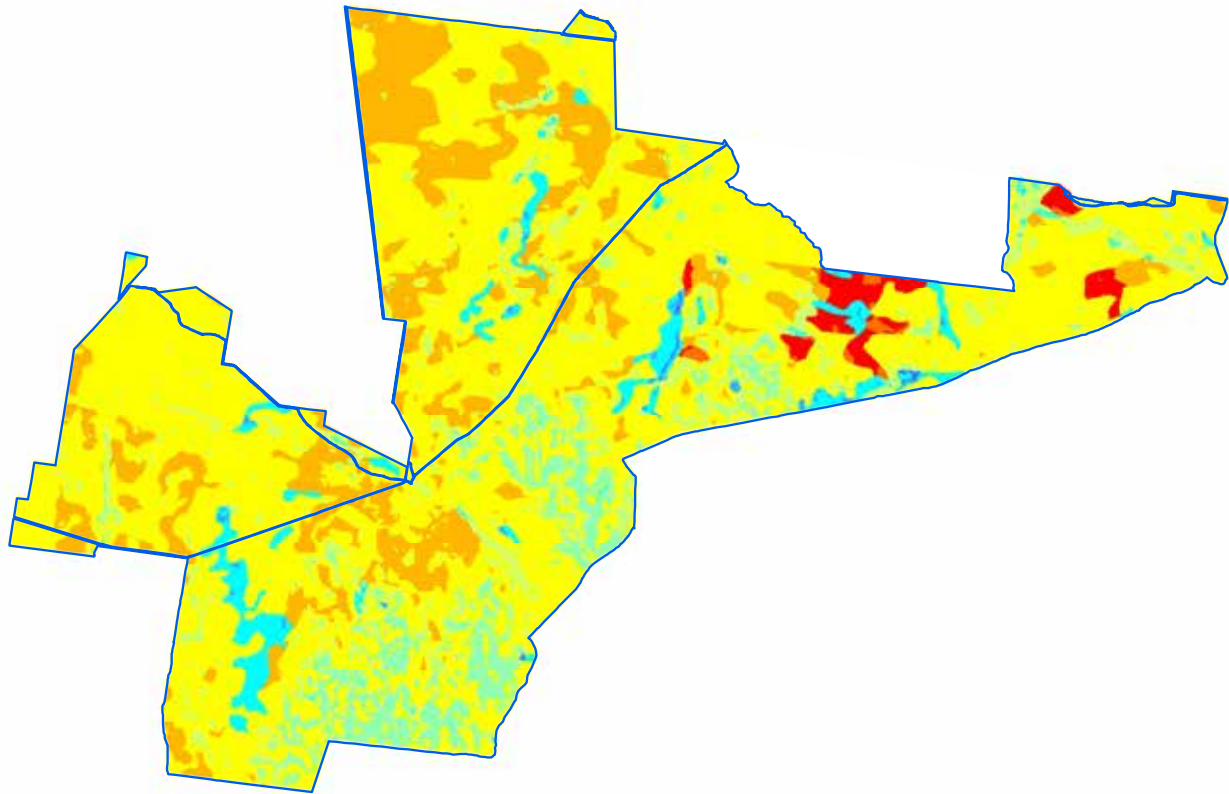
 Pilliga State Conservation Area boundary

ADS40 Airborne Digital Sensor data.  
Spatial data courtesy of Office of Environment and Heritage.  
Spatial analysis by Remote Census Pty Ltd (2014).



# Pilliga State Conservation Area

Predicted location - white cypress pine

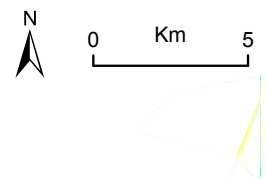


Relative probability (%) of white cypress pine occurrence

- 0 - 10
- 10 - 20
- 20 - 30
- 30 - 40
- 40 - 50
- 50 - 60
- 60 - 70
- 70 - 80
- 80 - 90
- 90 - 100

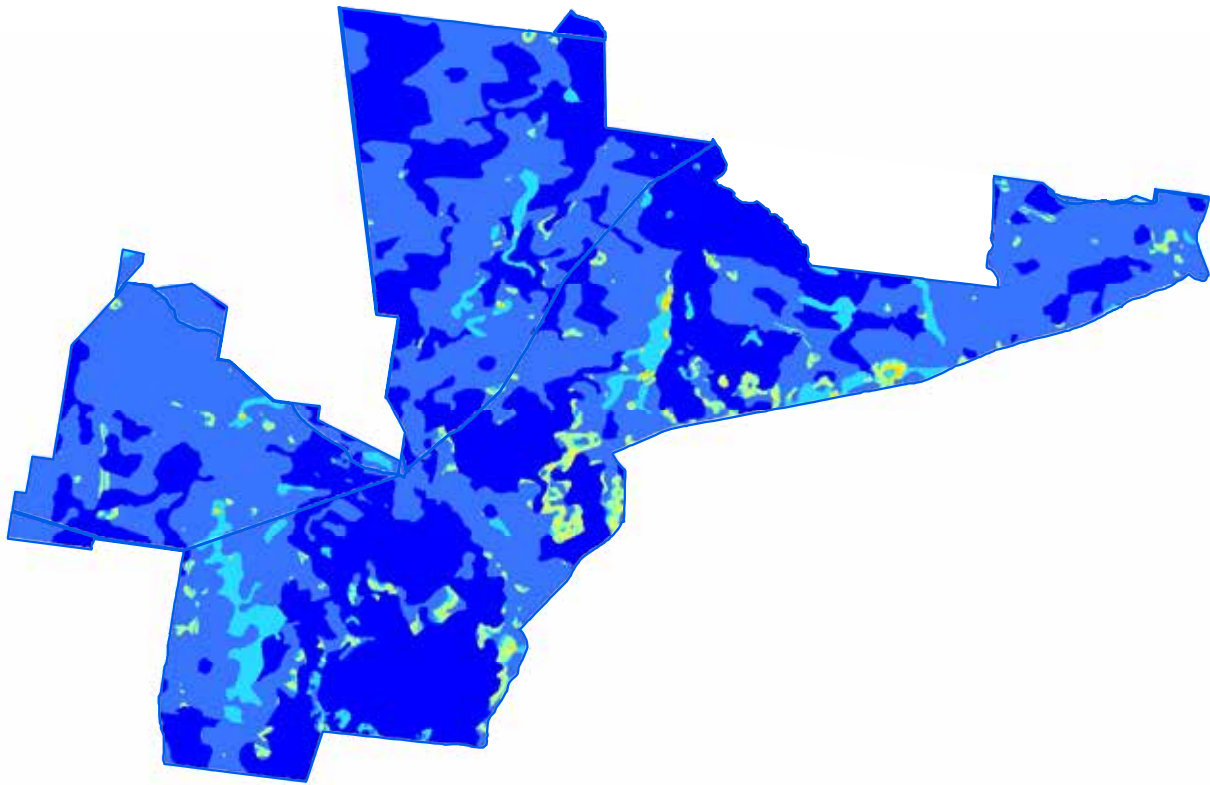
□ Pilliga State Conservation Area boundary

Spatial data courtesy of Office of Environment and Heritage.  
Spatial analysis by Eco Logical Australia Pty Ltd.



# Pilliga State Conservation Area

Predicted location - black cypress pine

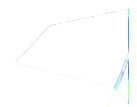
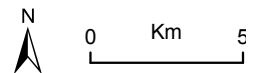


## Relative probability (%) of black cypress pine occurrence

- 0 - 10
- 10 - 20
- 20 - 30
- 30 - 40
- 40 - 50
- 50 - 60
- 60 - 70
- 70 - 80

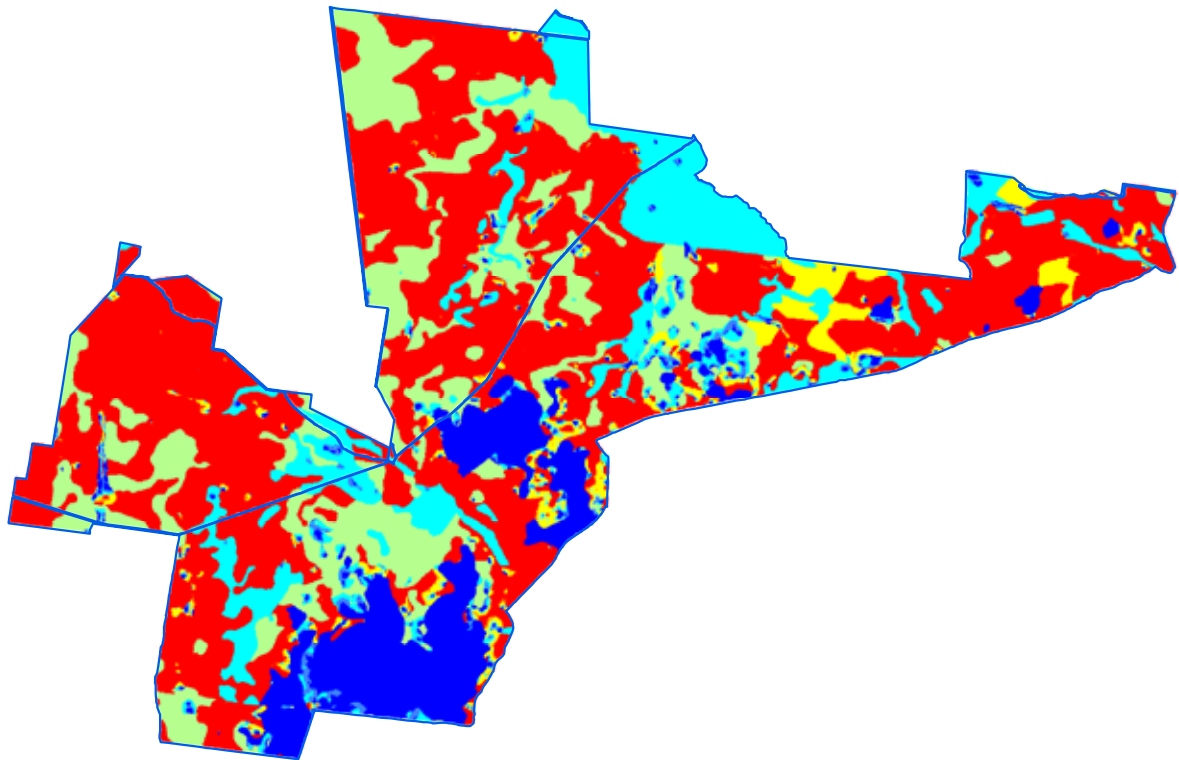
□ Pilliga State Conservation Area boundary

Spatial data courtesy of Office of Environment and Heritage.  
Spatial analysis by Eco Logical Australia Pty Ltd.

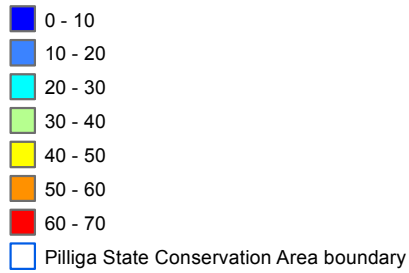


# Pilliga State Conservation Area

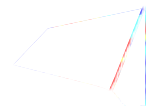
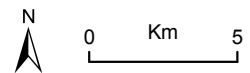
## Predicted location - bulloak



### Relative probability (%) of bulloak occurrence

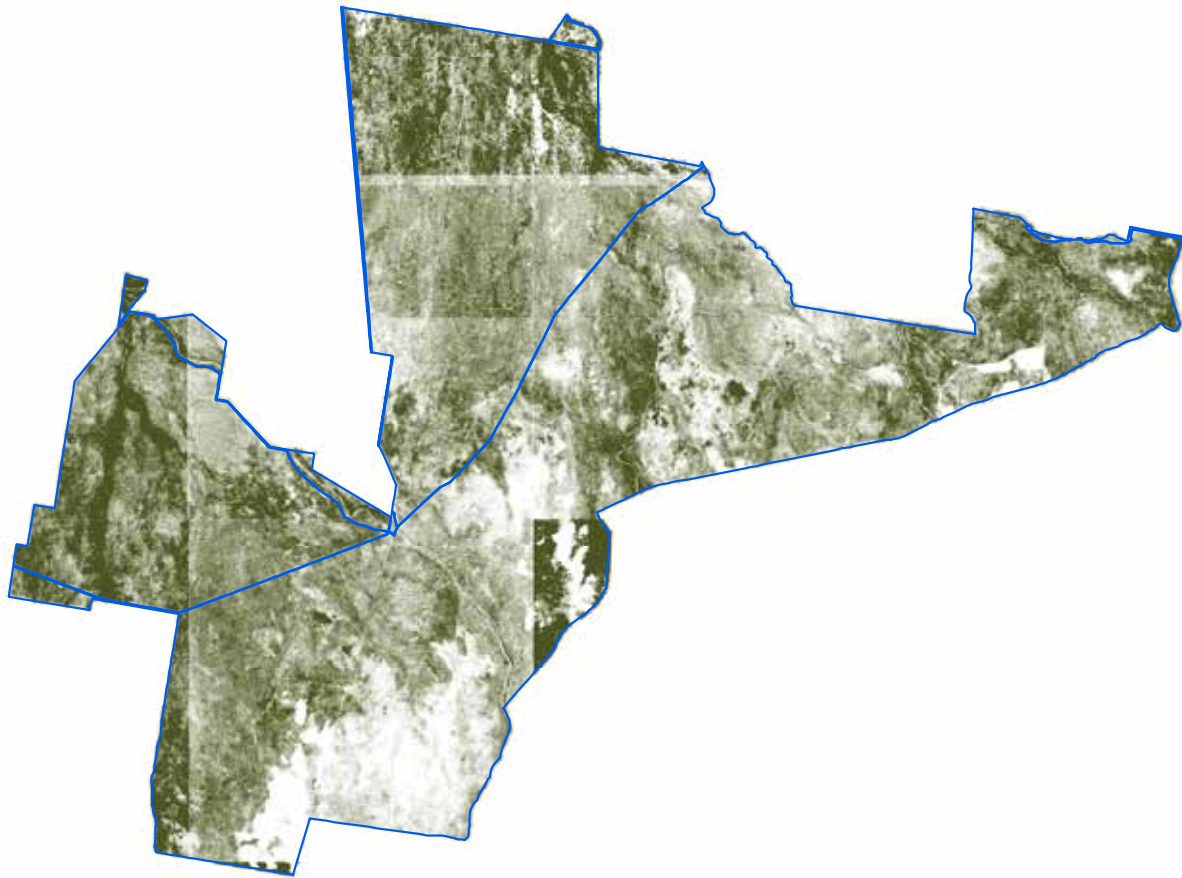


Spatial data courtesy of Office of Environment and Heritage.  
Spatial analysis by Eco Logical Australia Pty Ltd.



# Pilliga State Conservation Area

Continuous canopy density surface - cypress pine



More dense canopy  
Less dense canopy

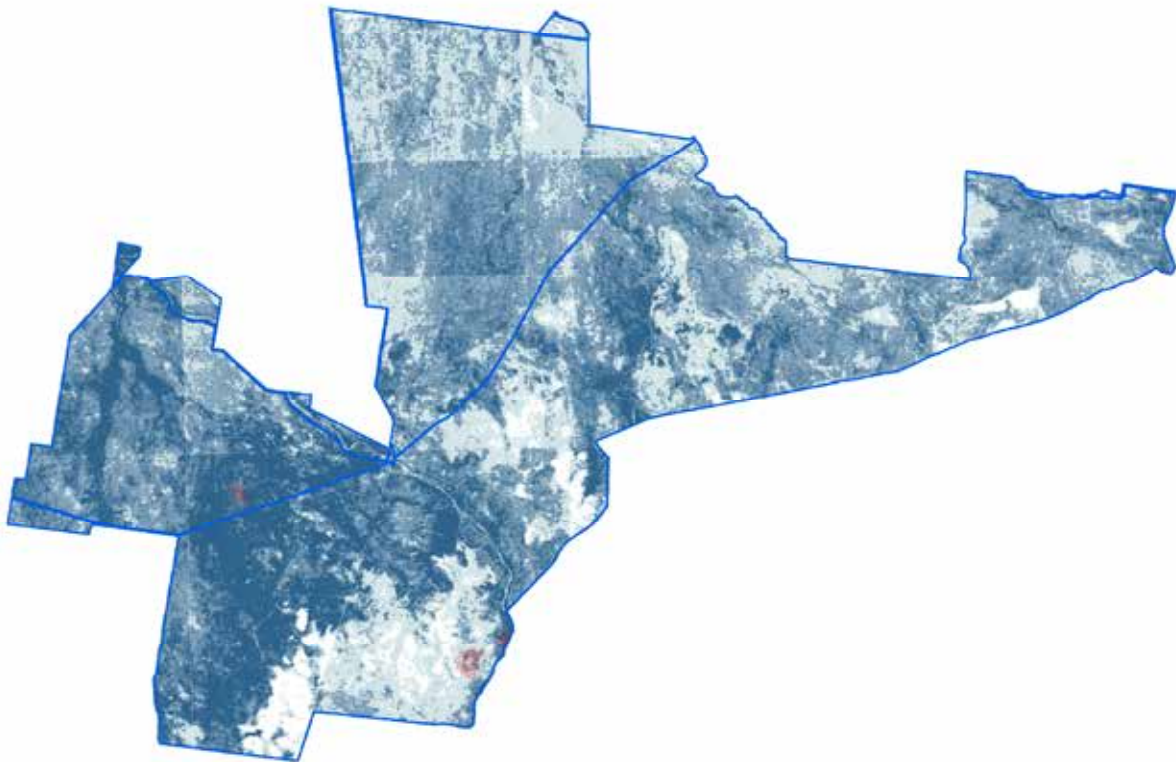
Pilliga State Conservation Area boundary

ADS40 Airborne Digital Sensor data.  
Spatial data courtesy of Office of Environment and Heritage.  
Spatial analysis by Remote Census Pty Ltd (2014).



# Pilliga State Conservation Area

## Discrete canopy density classes - cypress pine

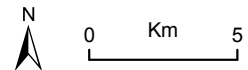


Wildfire since 2004-05

### Canopy density classes

- Class 0 (little or no cypress pine detected)
- Density slice range 1 to 10
- Density slice range 10 to 20
- Density slice range 20 to 30
- Density slice range 30 to 100
- Pilliga State Conservation Area boundary

ADS40 Airborne Digital Sensor data.  
Spatial data courtesy of Office of Environment and Heritage.  
Spatial analysis by Remote Census Pty Ltd (2014).



# Pilliga State Conservation Area

## Summary statistics - spatial analysis

Area of cypress canopy classes (excludes areas affected by wildfire since 2009)	
Class	Total (hectares)
Class 0 (little or no cypress detected)	1,527
Class 1 (1-10 percent)	8,612
Class 2 (11-20 percent)	11,703
Class 3 (21-30 percent)	7,278
Class 4 (>31 percent)	5,106

Issues and confidence levels for ADS40 spatial products		
ADS40 image quality	Issues	Confidence levels
High	Image classification and mapping includes other species in north eastern section	Higher



# Pilliga State Conservation Area

## Summary statistics - general

Lindsay types	Area (hectares)	Proportion of total (%)
Red Gum - Roughbark Apple - White Cypress Pine (Lindsay Types)	210	1
Red Gum - Narrowleaf Ironbark - White Cypress Pine (Lindsay Types)	54	<1
Belah (Lindsay Types)	73	<1
Red Gum - White Cypress Pine	509	2
Broom (Heath)	3,381	10
Brigalow (Lindsay Types)	29	<1
Narrowleaf Ironbark (Lindsay Types)	149	<1
Narrowleaf Ironbark - Forest Oak - White Cypress Pine (Lindsay Types)	5,150	16
Narrowleaf Ironbark - Forest Oak - Cypress Pine - (Mugga Ironbark)	144	<1
Narrowleaf Ironbark - Bloodwood	2	<1
Mallee (Lindsay Types)	19	<1
Silverleaf Ironbark (Lindsay Types)	37	<1
Broadleaf Ironbark (Lindsay Types)	1	<1
White Cypress Pine - Red Gum	1,282	4
White Cypress Pine - Red Gum - Roughbark Apple (Lindsay Types)	914	3
White Cypress Pine - Narrowleaf Ironbark - Red Gum (Lindsay Types)	839	3
White Cypress Pine - Narrowleaf Ironbark - Forest Oak (Lindsay Types)	9,872	30
Cypress Pine - Narrowleaf Ironbark - Forest Oak - (Mugga Ironbark)	19	<1
Cypress Pine - Narrowleaf Ironbark - Bloodwood - Red Gum ( <i>blakeyi</i> )	126	<1
Bimble Box (Lindsay Types)	12	<1
Bimble Box - White Cypress Pine (Lindsay Types)	158	<1
Pilliga Box (Lindsay Types)	60	<1
Pilliga Box - White Cypress Pine (Lindsay Types)	2,790	8
White Cypress Pine - Silverleaf Ironbark (Lindsay Types)	520	2
White Cypress Pine - Bimble Box (Lindsay Types)	886	3
White Cypress Pine - Pilliga Box (Lindsay Types)	2,694	8
White Cypress Pine - Mugga Ironbark - Forest Oak	145	<1
Pine - Mugga Ironbark - Forest Oak (Pilliga Box)	183	1
White Cypress Pine - Forest Oak	682	2
White Cypress Pine - Bloodwood - Red Gum (Lindsay Types)	1	<1
Scrub	4	<1
Mugga Ironbark - Forest Oak - Cypress Pine	385	1
Mugga Ironbark - Pine	206	1
Forest Oak - White Cypress Pine + (Narrowleaf Ironbark - Forest Oak - White Cypress Pine)	11	<1
Bloodwood - Red Gum - Narrowleaf Ironbark - White Cypress Pine (Lindsay Types)	17	<1
Bloodwood - Red Gum ( <i>blakeyi</i> ) - Cypress Pine	68	<1
Bloodwood - Red Gum - White Cypress Pine	8	<1
Bloodwood - Narrowleaf Ironbark - Pine	21	<1
Untyped	1,506	5

# Pilliga State Conservation Area

## Summary statistics - general

NSW Vegetation classification and assessment (VCA) type	NSW TSC Act <sup>1</sup>	EPBC Act <sup>2</sup>
VCA 55: Belah woodland on alluvial plains and low rises in the central NSW wheatbelt to Pilliga and Liverpool Plains regions	-	-
VCA 35: Brigalow - Belah open forest / woodland on alluvial often gilgaied clay from Pilliga Scrub to Goondiwindi, Brigalow Belt South Bioregion	yes	yes
VCA 141: Broombush - wattle very tall shrubland of the Pilliga to Goonoo regions, Brigalow Belt South Bioregion	-	-
VCA 411: Buloke - White Cypress Pine woodland on outwash plains in the Pilliga Scrub and Narrabri regions, Brigalow Belt South bioregion	-	-
VCA 409: Dirty (Baradine) Gum - White Bloodwood - White Cypress Pine - Motherumbah shrubby woodland on sandy soils in the Pilliga Scrub and surrounding region, Brigalow Belt South Bioregion	-	-
VCA 415: Fringe Myrtle shrubland of the Pilliga Scrub	-	-
VCA 256: Green Mallee tall mallee woodland on rises in the Pilliga - Goonoo regions, southern Brigalow Belt South Bioeregion	-	-
VCA 402: Mugga Ironbark - White Cypress Pine - gum tall woodland on flats in the Pilliga forests and surrounding regions, Brigalow Belt South Bioregion	-	-
VCA 398: Narrow-leaved Ironbark - White Cypress Pine - Buloke tall open forest on lower slopes and flats in the Pilliga Scrub and surrounding forests in the central north Brigalow Belt South Bioregion	-	-
VCA 416: Pilliga "tank gilgai" wetland sedgeland rushland, Brigalow Belt South Bioregion	-	-
VCA 88: Pilliga Box - White Cypress Pine - Buloke shrubby woodland in the Brigalow Belt South Bioregion	-	-
VCA 397: Poplar Box - White Cypress Pine shrub grass tall woodland of the Pilliga - Warialda region, Brigalow Belt South Bioregion	-	-
VCA 399: Red gum - Rough-barked Apple +/- tea tree sandy creek woodland (wetland) in the Pilliga - Goonoo sandstone forests, Brigalow Belt South Bioregion	-	-
VCA 404: Red Ironbark - White Bloodwood -/+ Burrows Wattle heathy woodland on sandy soil in the Pilliga forests	-	-
VCA 400: Riparian sedgeland rushland wetland of the Pilliga to Goonoo sandstone forests, Brigalow Belt South Bioregion	-	-
VCA 401: Rough-barked Apple - red gum - cypress pine woodland on sandy flats, mainly in the Pilliga Scrub region	-	-
VCA 413: Silver-leaved Ironbark - White Cypress Pine - box dry shrub grass woodland of the Pilliga Scrub - Warialda region, Brigalow Belt South Bioregion	-	-
VCA 410: Swamp Paper-bark very tall shrubland wetland on sodic soils in the Pilliga Scrub region	-	-
VCA 405: White Bloodwood - Red Ironbark - cypress pine shrubby sandstone woodland of the Pilliga Scrub and surrounding regions	-	-

<sup>1</sup> NSW *Threatened Species Conservation Act 1995*

<sup>2</sup> Australian Government *Environment Protection and Biodiversity Conservation Act 1999*

Native species recorded	Number
Flora	507
Fauna	112

# Pilliga State Conservation Area

## Summary statistics - general

Threatened species			
Scientific name	Common name	NSW TSC Act <sup>1</sup>	EPBC Act <sup>2</sup>
<b>Flora</b>			
<i>Cyperus conicus</i>	-	E1	-
<i>Diuris tricolor</i>	Pine donkey orchid	V	-
<i>Rulingia procumbens</i>	-	V	V
<i>Philotheca ericifolia</i>	-	-	V
<b>Fauna</b>			
<i>Crinia sloanei</i>	Sloane's froglet	V	-
<i>Leipoa ocellata</i>	Malleefowl	E1	V
<i>Calyptorhynchus lathami</i>	Glossy black-cockatoo	V	-
<i>Ninox connivens</i>	Barking owl	V	-
<i>Climacteris picumnus victoriae</i>	Brown treecreeper (eastern subspecies)	V	-
<i>Chthonicola sagittata</i>	Speckled warbler	V	-
<i>Pomatostomus temporalis temporalis</i>	Grey-crowned babbler (eastern subspecies)	V	-
<i>Phascolarctos cinereus</i>	Koala	V	V
<i>Aepyprymnus rufescens</i>	Rufous bettong	V	-
<i>Saccolaimus flaviventris</i>	Yellow-bellied sheath-tail-bat	V	-
<i>Chalinolobus picatus</i>	Little pied bat	V	-
<i>Vespadelus troughtoni</i>	Eastern cave bat	V	-
<i>Pseudomys pilligaensis</i>	Pilliga mouse	V	V

Cultural heritage - Aboriginal and non-Aboriginal	Number of sites
AHIMS registered sites	18
Heritage items or places of historic significance	0

Current management plans	Status
Plan of management	no
Fire management strategy	June 2009
Regional pest management strategy	Northern plains region 2012-17

Fire history	Prescribed burn (hectares)	Wildfire (hectares)
2006-07	-	75
2008-09	-	20
2010-11	174	-
2011-12	227	-

Mining	Number of titles
Exploration	1 petroleum
Application	none

Apiarist sites
109