

# Woodsreef State Conservation Area (331 hectares)

## Location



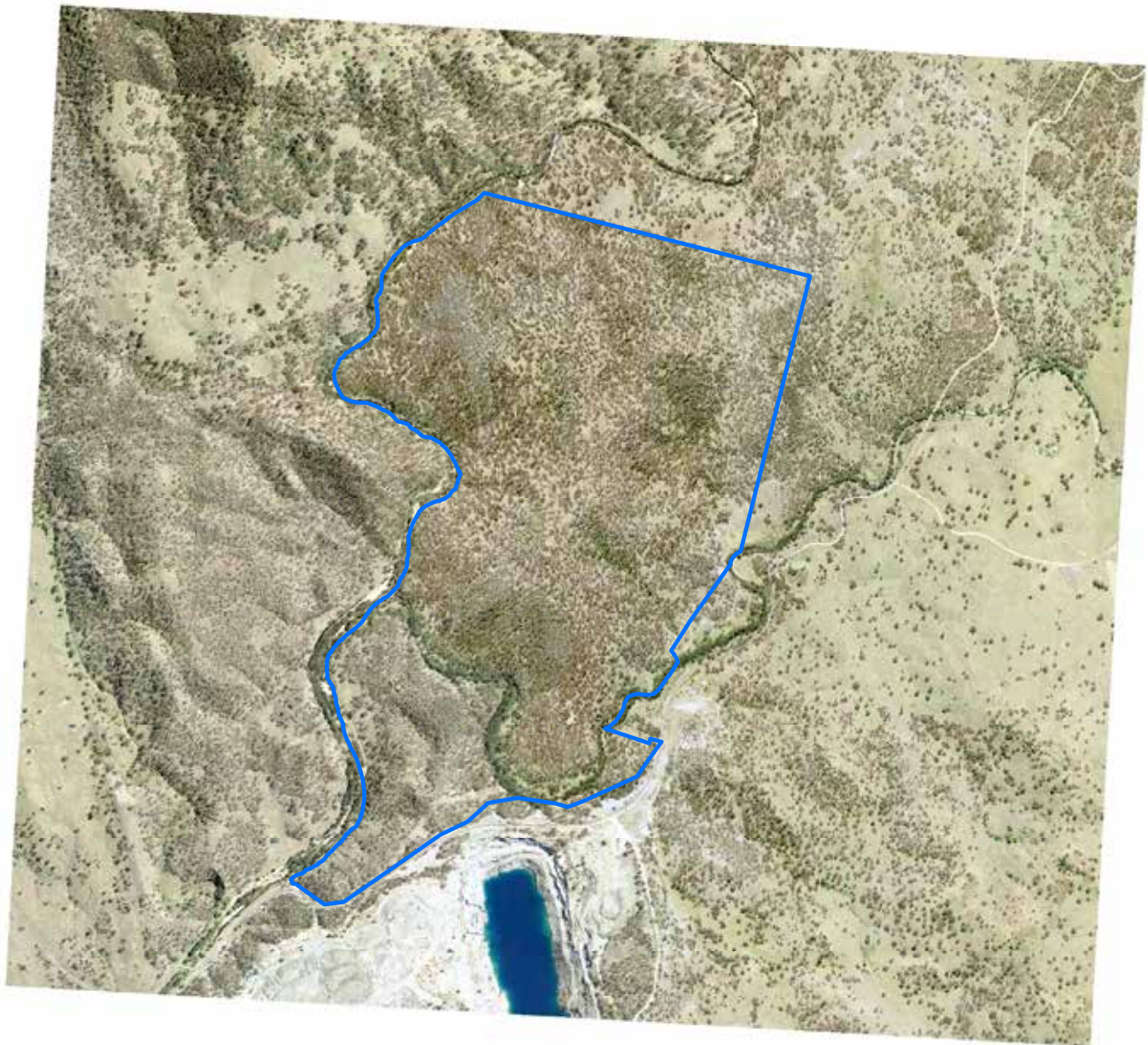
- Woodsreef State Conservation Area
- Other Zone 3 State Conservation Areas


Spatial data courtesy of Office of Environment and Heritage.



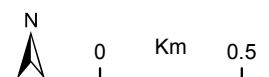
# Woodsreef State Conservation Area

Aerial



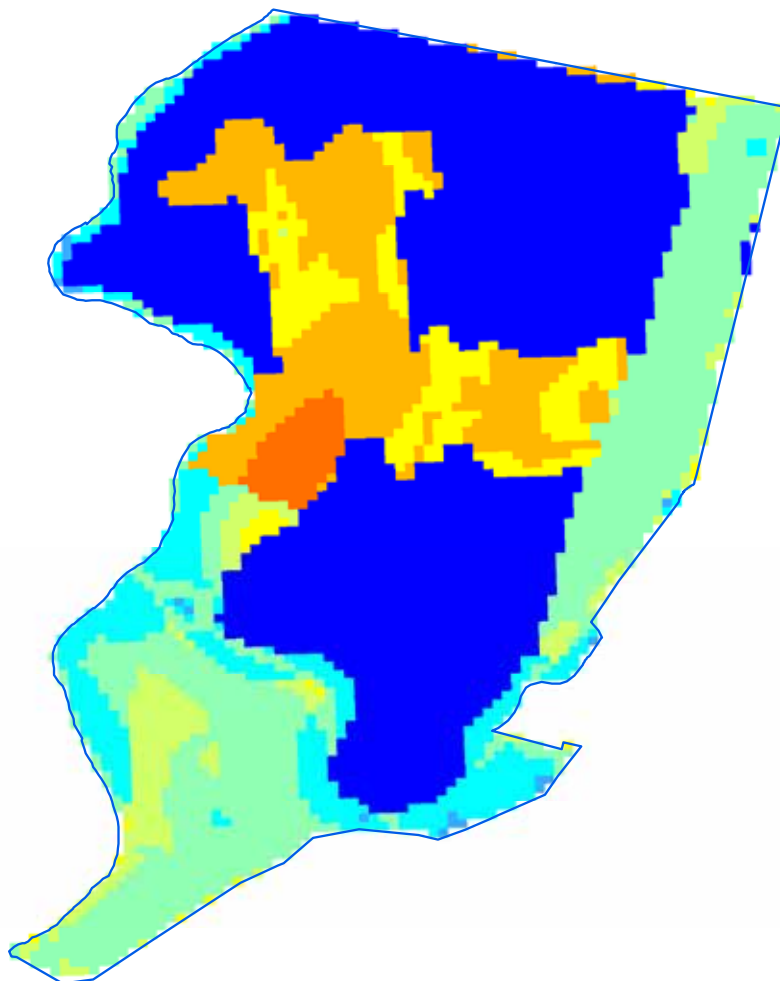
 Woodsreef State Conservation Area boundary

ADS40 Airborne Digital Sensor data.  
Spatial data courtesy of Office of Environment and Heritage.  
Spatial analysis by Remote Census Pty Ltd (2014).



# Woodsreef State Conservation Area

## Predicted location - white cypress pine



### Relative probability (%) of white cypress pine occurrence

- 0 - 10
- 10 - 20
- 20 - 30
- 30 - 40
- 40 - 50
- 50 - 60
- 60 - 70
- 70 - 80
- 80 - 90
- 90 - 100

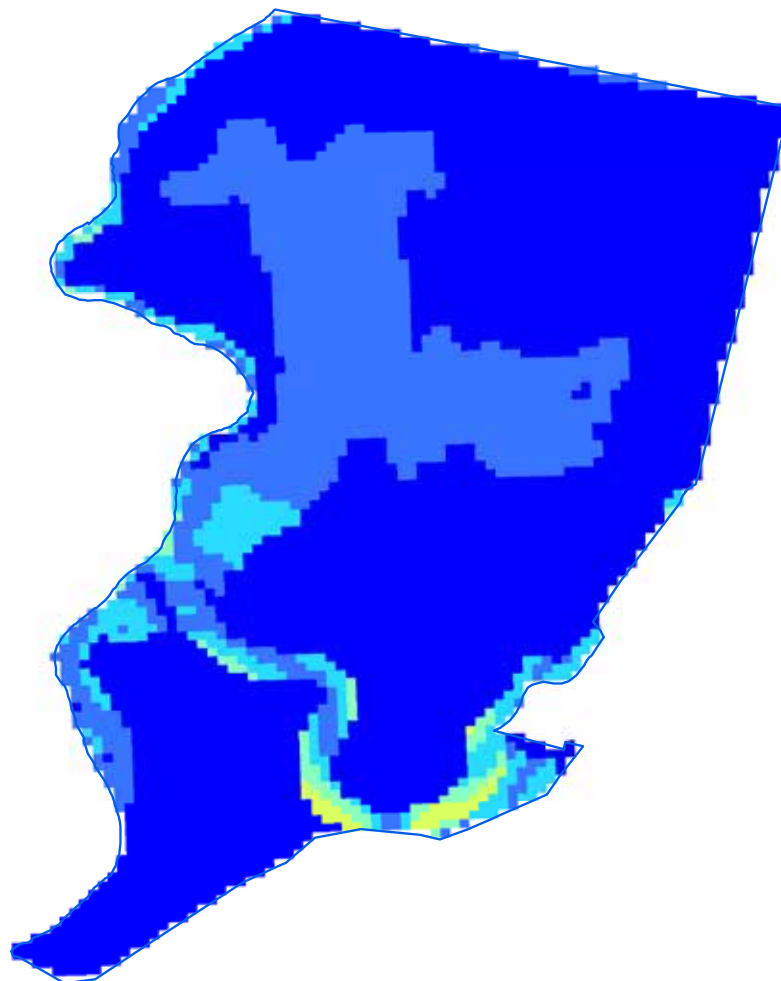
Woodsreef State Conservation Area boundary

Spatial data courtesy of Office of Environment and Heritage.  
Spatial analysis by Eco Logical Australia Pty Ltd.



# Woodsreef State Conservation Area

## Predicted location - black cypress pine



### Relative probability (%) of black cypress pine occurrence

- 0 - 10
- 10 - 20
- 20 - 30
- 30 - 40
- 40 - 50
- 50 - 60
- 60 - 70
- 70 - 80

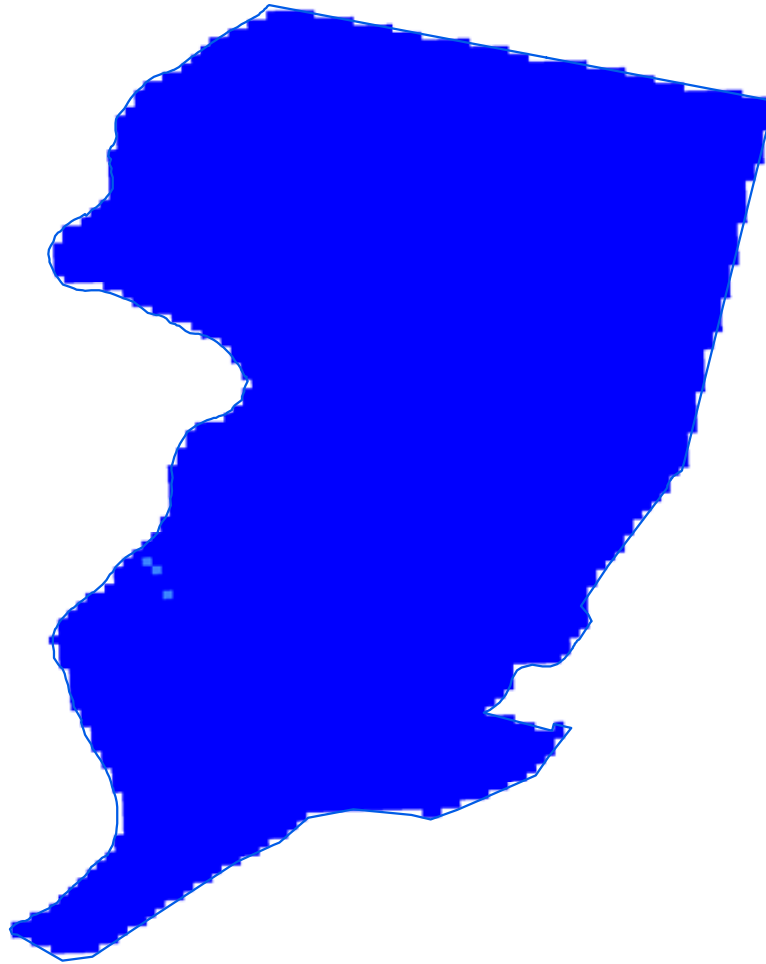
Woodsreef State Conservation Area boundary

Spatial data courtesy of Office of Environment and Heritage.  
Spatial analysis by Eco Logical Australia Pty Ltd.

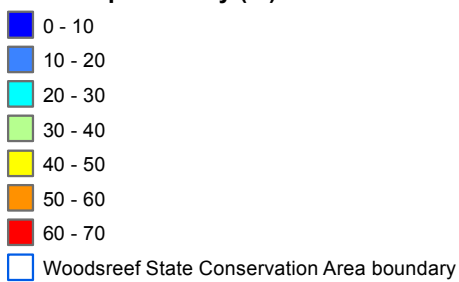


# Woodsreef State Conservation Area

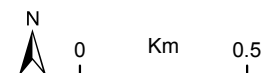
## Predicted location - bulloak



### Relative probability (%) of bulloak occurrence



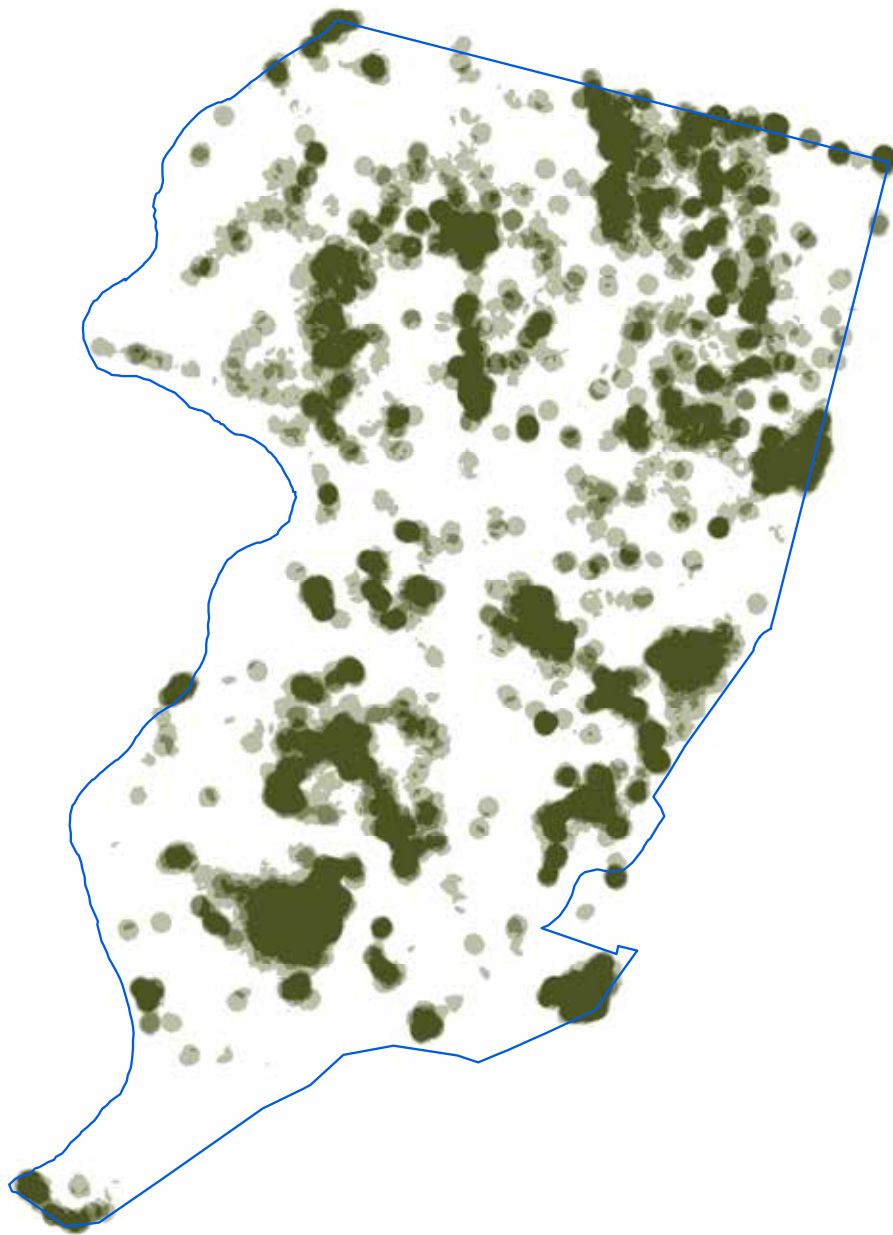
Spatial data courtesy of Office of Environment and Heritage.  
Spatial analysis by Eco Logical Australia Pty Ltd.







# Woodsreef State Conservation Area

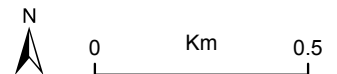
Continuous canopy density surface - cypress pine



 More dense canopy  
Less dense canopy

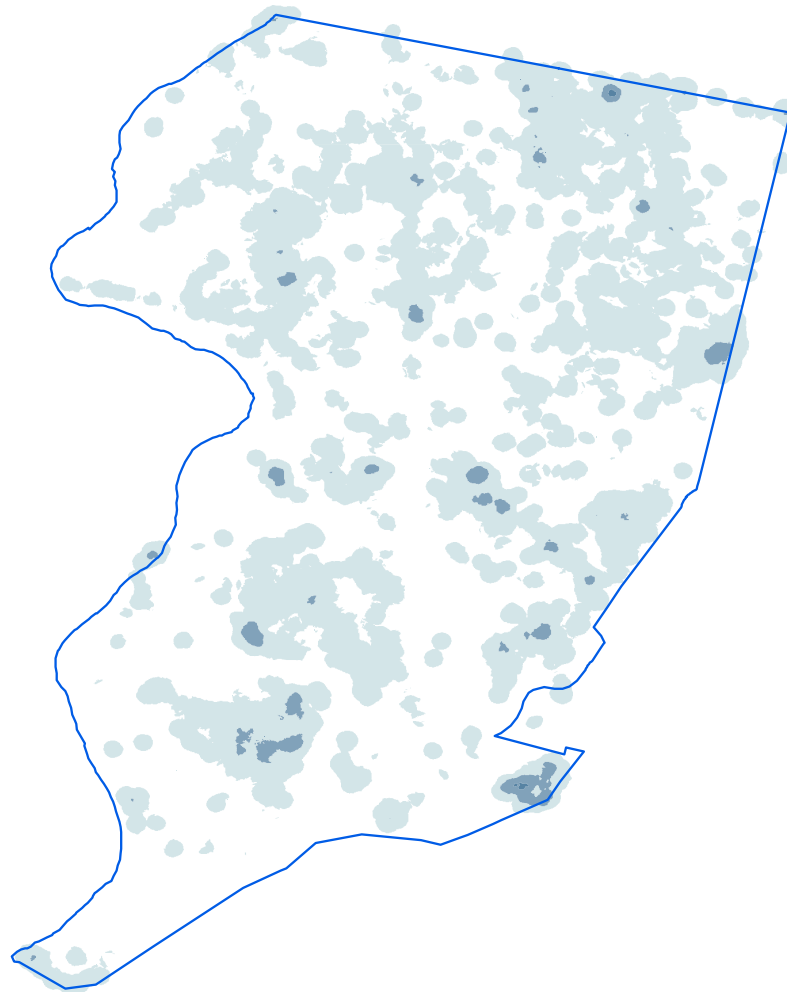
 Woodsreef State Conservation Area boundary

ADS40 Airborne Digital Sensor data.  
Spatial data courtesy of Office of Environment and Heritage.  
Spatial analysis by Remote Census Pty Ltd (2014).









# Woodsreef State Conservation Area

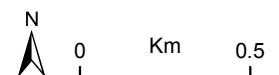
## Discrete canopy density classes - cypress pine



### Canopy density classes

-  Class 0 (little or no cypress pine detected)
-  Density slice range 1 to 10
-  Density slice range 10 to 20
-  Density slice range 20 to 30
-  Density slice range 30 to 100
-  Woodsreef State Conservation Area boundary

ADS40 Airborne Digital Sensor data.  
Spatial data courtesy of Office of Environment and Heritage.  
Spatial analysis by Remote Census Pty Ltd (2014).



# Woodsreef State Conservation Area

## Summary statistics - spatial analysis

Area of cypress canopy classes (excludes areas affected by wildfire since 2009)	
Class	Total (hectares)
Class 0 (little or no cypress detected)	200
Class 1 (1-10 percent)	131
Class 2 (11-20 percent)	5
Class 3 (21-30 percent)	0
Class 4 (>31 percent)	0

Issues and confidence levels for ADS40 spatial products		
ADS40 image quality	Issues	Confidence levels
High	Image classification and mapping includes other species	Lower



# Woodsreef State Conservation Area

## Summary statistics - general

Lindsay types	Area (hectares)	Proportion of total (%)
Untyped	331	-

NSW Vegetation classification and assessment (VCA) type	NSW TSC Act <sup>1</sup>	EPBC Act <sup>2</sup>
VCA 588: White Box - White Cypress Pine shrubby hills open forest mainly in the Nandewar Bioregion	-	-
VCA 511: Queensland Bluegrass - Redleg Grass - Rats Tail Grass - spear grass - panic grass derived grassland of the Nandewar and Brigalow Belt South Bioregions	-	-
VCA 84: River Oak - Rough-barked Apple - red gum - box riparian tall woodland (wetland) of the Brigalow Belt South and Nandewar Bioregions	-	-
VCA 544: Rough-barked Apple +/- cypress pine +/- Blakely's Red Gum riparian open forest / woodland of the Nandewar and New England Tableland Bioregions	yes	yes
VCA 594: Silver-leaved Ironbark - White Cypress Pine shrubby open forest of Brigalow Belt South and Nandewar Bioregions	-	-
VCA 542: Stringybark - Rough-barked Apple - cypress pine shrubby open forest of the eastern Nandewar and western New England Tablelands Bioregions	-	-

<sup>1</sup> NSW *Threatened Species Conservation Act 1995*

<sup>2</sup> Australian Government *Environment Protection and Biodiversity Conservation Act 1999*

Native species recorded		Number	
Flora		198	
Fauna		118	
Threatened species			
Scientific name	Common name	NSW TSC Act <sup>1</sup>	EPBC Act <sup>2</sup>
Flora			
<i>Boronia ruppia</i>	Rupp's boronia	E1	-
<i>Callistemon pungens</i>	-	-	V
Fauna			
<i>Glossopsitta pusilla</i>	Little lorikeet	V	-
<i>Neophema pulchella</i>	Turquoise parrot	V	-
<i>Climacteris picumnus victoriae</i>	Brown treecreeper (eastern subspecies)	V	-
<i>Chthonicola sagittata</i>	Speckled warbler	V	-
<i>Daphoenositta chrysoptera</i>	Varied sittella	V	-
<i>Melanodryas cucullata cucullata</i>	Hooded robin (south-eastern form)	V	-
<i>Stagonopleura guttata</i>	Diamond firetail	V	-
<i>Petaurus norfolcensis</i>	Squirrel glider	V	-
<i>Chalinolobus dwyeri</i>	Large-eared pied bat	V	V

Cultural heritage - Aboriginal and non-Aboriginal	Number of sites
AHIMS registered sites	1
Heritage items or places of historic significance	No information available

# Woodsreef State Conservation Area

## Summary statistics - general

Current management plans	Status
Plan of management	no
Fire management strategy	August 2012
Regional pest management strategy	Northern tablelands region 2012-17

Fire history	Prescribed burn (hectares)	Wildfire (hectares)
2008-09 - 2012-13	-	-

Mining	Number of titles
Exploration	none
Application	1 mineral

Apiarist sites
None

# References

- Benson, J. S., Richards, P. G., Waller, S. and Allen, C. B. (2010) "New South Wales Vegetation classification and Assessment: Part 3 Plant communities of the NSW Brigalow Belt South, Nandewar and west New England Bioregions and update of NSW Western Plains and South-western Slopes plant communities, Version 3 of the NS," *Cunninghamia*, 11, pp. 457-579.
- Eco Logical Australia (2014) *Characterisation of White Cypress Pine Callitris glaucophylla forests in the Pilliga region of NSW Spatial analyses using LiDAR, ADS40 and stem volume information*, Coffs Harbour, Prepared for the NSW Natural Resources Commission by Eco Logical Australia.
- Forestry Corporation of NSW (2013) *Image Analysis for Identification of White Cypress*, Sydney, Internal report prepared by Forest Information and Planning, Forestry Corporation of NSW.
- Forestry Corporation of NSW (2014) *White Cypress Volume Predictions using LiDAR Derived Heights for Pilliga and Gunnedah Management Areas - March 2014*, Sydney, Internal report prepared by Forest Information and Planning, Forestry Corporation of NSW.
- Lindsay, A. (1967) *Forest Types of New South Wales Cypress Pine Zone: Technical Paper 8*, Sydney, Forestry Commission of NSW, State Government of NSW.
- NSW Department of Trade and Investment (2013) "MinView 2," [online] Available from: [minview.minerals.nsw.gov.au/mv2web/mv2](http://minview.minerals.nsw.gov.au/mv2web/mv2) (Accessed 22 November 2013).
- NSW Government (2010) *Integrated Forestry Operations Approval for the Brigalow and Nandewar Region*, Sydney, NSW Government.
- NSW National Parks and Wildlife Service (2012a) *Draft Plan of Management - Trinkey State Conservation Area - Trinkey Community Conservation Area Zone 3*, Narrabri, NSW Office of Environment and Heritage.
- NSW National Parks and Wildlife Service (2012b) *Draft Plan of Management - Wondoba State Conservation Area - Wondoba Community Conservation Area Zone 3*, Narrabri, NSW Office of Environment and Heritage.
- NSW National Parks and Wildlife Service (2012c) *Plan of Management - Biddon State Conservation Area - Biddon Community Conservation Area Zone 3*, Narrabri, NSW Office of Environment and Heritage.
- NSW National Parks and Wildlife Service (2012d) *Plan of Management - Bullawa Creek State Conservation Area - Bullawa Creek Community Conservation Area Zone 3*, Narrabri, NSW Office of Environment and Heritage.
- NSW National Parks and Wildlife Service (2012e) *Plan of Management - Leard State Conservation Area - Leard Community Conservation Area Zone 3*, Narrabri, NSW National Parks and Wildlife Service.
- NSW Office of Environment and Heritage (2013a) *Aboriginal Heritage Information Management Register*, Sydney, NSW Office of Environment and Heritage, [online] Available from: <http://www.environment.nsw.gov.au/licences/AboriginalHeritageInformationManagementSystem.htm>.
- NSW Office of Environment and Heritage (2013b) *Apiarist licences for the Brigalow and Nandewar region*, NSW, Data provided by NSW Office of Environment and Heritage.
- NSW Office of Environment and Heritage (2013c) "BioNet - Atlas of NSW Wildlife," [online] Available from: [bionet.nsw.gov.au](http://bionet.nsw.gov.au) (Accessed 23 December 2013).
- NSW Office of Environment and Heritage (2014a) *Fire history data 2005-06 to 2012-13 (prescribed burn and wildfire)*, Brigalow and Nandewar region, NSW Office of Environment and Heritage.
- NSW Office of Environment and Heritage (2014b) "Fire management strategy," *Fire Management Strategy*, [online] Available from: <http://www.environment.nsw.gov.au/firemanagement/FireManagementPlans.htm>.
- NSW Office of Environment and Heritage (2013d) "NSW National Parks and Wildlife Service (NPWS) Estate," [online] Available from: <http://mapdata.environment.nsw.gov.au/geonetwork/srv/en/metadata.show?uuid={3F9E78BC-2F56-452A-A37F-B216B31C76CA}>.
- NSW Office of Environment and Heritage (2012a) *Regional Pest Management Strategy 2012-17: Blue Mountains Region - a new approach for reducing impacts on native species and park neighbours*, Sydney, NSW Office of Environment and Heritage.
- NSW Office of Environment and Heritage (2012b) *Regional Pest Management Strategy 2012-17: Northern Plains Region - a new approach for reducing impacts on native species and park neighbours*, Sydney, NSW Office of Environment and Heritage.
- NSW Office of Environment and Heritage (2012c) *Regional Pest Management Strategy 2012-17: Northern Tablelands Region - a new approach for reducing impacts on native species and park neighbours*, Sydney, NSW Office of Environment and Heritage.
- NSW Office of Environment and Heritage (2014c) "Threatened Species Profiles," [online] Available from: <http://www.environment.nsw.gov.au/threatenedSpeciesApp/>.
- Remote Census (2014) *Classifying white cypress pine distribution with digital aerial photography - Remote sensing analysis for the Management of cypress forests in the Brigalow and Nandewar Community Conservation Area Zone 3*, Sydney, Report prepared by Remote Census for Natural Resources Commission.